

SW sec 2 104 41

CERTIFICATE OF LOCATION OF GOVERNMENT CORNER

NORTHEAST Corner of Section 10, Township 104N, Range 41W

5th Principal Meridian, State of Minnesota, County of Nobles.

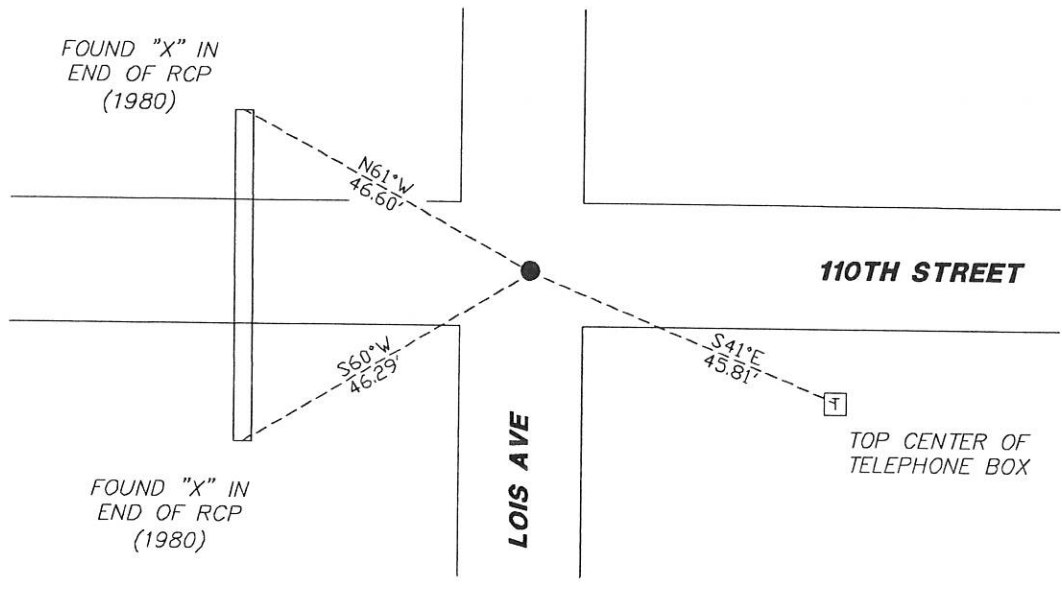
At the corner location shown on the sketch:

On 11/28/2017 found a 5/8" REBAR AT THE CENTERLINE INTERSECTION
DATE

left monument as found lowered monument removed monument (explain)

On _____ placed a _____
DATE

SKETCH OF REFERENCE TIES



N.T.S.

Statement of evidence for this corner location is on back of this page.

I hereby certify that this document was researched and prepared by me or under my direct supervision and that I am a licensed Land Surveyor under the laws of the State of Minnesota.

Signature L.M. Wilson

Date 1/29/18 License No. 49563

Title:

- Land Surveyor Professional Engineer
- County Surveyor County Engineer

DOCUMENT NUMBER A 357503
Certified, Filed and or Recorded on
March 07, 2018 2:20 PM

Lynn M. Wilson

NOBLES COUNTY RECORDER
LYNN M. WILSON
507-295-5268

Pages: 2

Statement of Evidence:

E-17

Northeast Corner of Section 10, Township 104 North, Range 41 West, 5th Principal Meridian, Nobles County, Minnesota.

1868-Deputy Surveyor set a post in mound with pits.

1903 - In Book 22, Page 130, the County Surveyor's section breakdown does not indicate the type of monument, but gives distances to the following corners:

1932 - Nobles County Highway Department "Corner Ties Book" calls for stone to mark the corner location.

1940 - Nobles County Highway Department "Corner Ties Book" calls for stone to mark the corner and a wood stake placed.

1977 - Nobles County Highway Department "Corner Ties Book" calls for 2x2 hub and stone marking the corner location.

1979 - MNDOT ROW plans show a station of 210+42.42 at the corner location. Measurement to the N1/4 of 10 is 2650.18 and 2618.68 to the N1/4 of 11.

1980 - Nobles County Highway Department "Corner Ties Book" notes a 24" iron pin placed to mark the corner location. The following ties were made:

N/D in PP	NW	47.65'
N/D in UGTCM	SE	46.27'
X in culvert N end	West	46.60'
X in culvert S end	West	46.29'

2017-On November 27th, Westwood Professional Services recovered a 5/8" rebar down 0.3' in gravel roadway centerline north/south/east/west. Two ties from 1980 were also recovered. Westwood measures 2649.94 to the N1/4 of 10 and 2617.92' to the N1/4 of 11 which agree within reason to record measurements. Ties were found or set as shown on the front of this certificate.

Analysis of the recovered data, field evidence and survey measurements, indicates that the monument found is the correct perpetuation of this corner. For additional information concerning this corner please contact Westwood Professional Services.