

SW sec 21 104 41

CERTIFICATE OF LOCATION OF GOVERNMENT CORNER

NORTHEAST Corner of Section 29, Township 104N, Range 41W

5th Principal Meridian, State of Minnesota, County of Nobles.

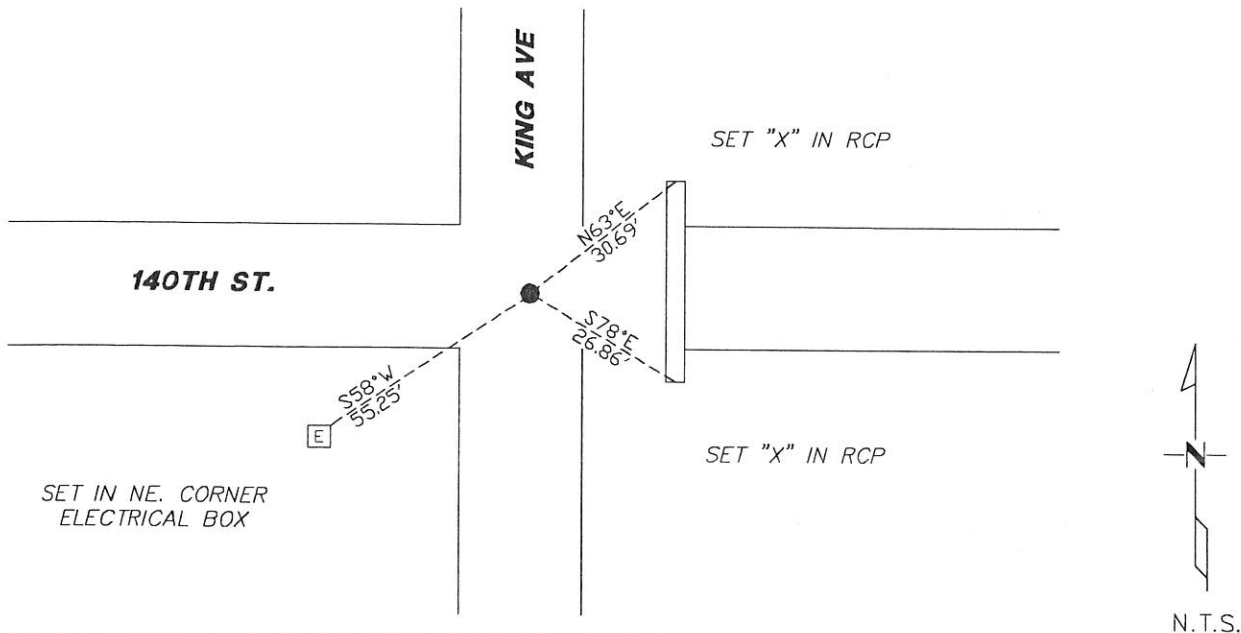
At the corner location shown on the sketch:

On 11/09/2017 found a 1/2" PIPE IN THE CENTERLINE INTERSECTION
DATE

left monument as found lowered monument removed monument (explain)

On _____ placed a _____
DATE

SKETCH OF REFERENCE TIES



Statement of evidence for this corner location is on back of this page.

I hereby certify that this document was researched and prepared by me or under my direct supervision and that I am a licensed Land Surveyor under the laws of the State of Minnesota.

Signature L.M. Wilson

Date 1/29/18 License No. 49563

Title:

- Land Surveyor Professional Engineer
- County Surveyor County Engineer

DOCUMENT NUMBER A 357593
Certified, Filed and or Recorded on
March 08, 2018 8:55 AM

Lynn M. Wilson

NOBLES COUNTY RECORDER
LYNN M. WILSON
507-295-5268

Pages: 2

Statement of Evidence:

R-9

Northeast Corner of Section 29, Township 104 North, Range 41 West, 5th Principal Meridian, Nobles County, Minnesota.

1868-Deputy Surveyor Richard N. L. Jeorlt, set a post in mound with pits for the section corner.

1895-On September 16th, in Surveyor's Record Book A-2, page 202, prepared by County Surveyor M.S. Smith, shows he found the original stake with the mound and pits at the corner positron. Set stone mound and granite boulder.

1900-Surveyor's Record Book A-2, page 382, prepared by County Surveyor M.S. Smith shows a stone at the corner location.

1936-Nobles County Highway Department "Corner Ties Book" calls for a stone at the corner location. Placed wood stake.

1937-Nobles County Highway Department "Corner Ties Book" calls for a stake at the corner location.

2017-On November 9th, Westwood Professional Services found a 1/2" iron pipe of unknown origin, which lands on N/S/E/W centerline intersection. Monument agrees with GLO distances. Accepting the found 1/2" iron pipe as the best available evidence of the corner position. Ties were found or set as shown on the front of this certificate.

Analysis of the recovered data, field evidence and survey measurements, indicates that the monument found is the correct perpetuation of this corner. For additional information concerning this corner please contact Westwood Professional Services.

3/1/2017