

SW Sec 22 104 41

COPY

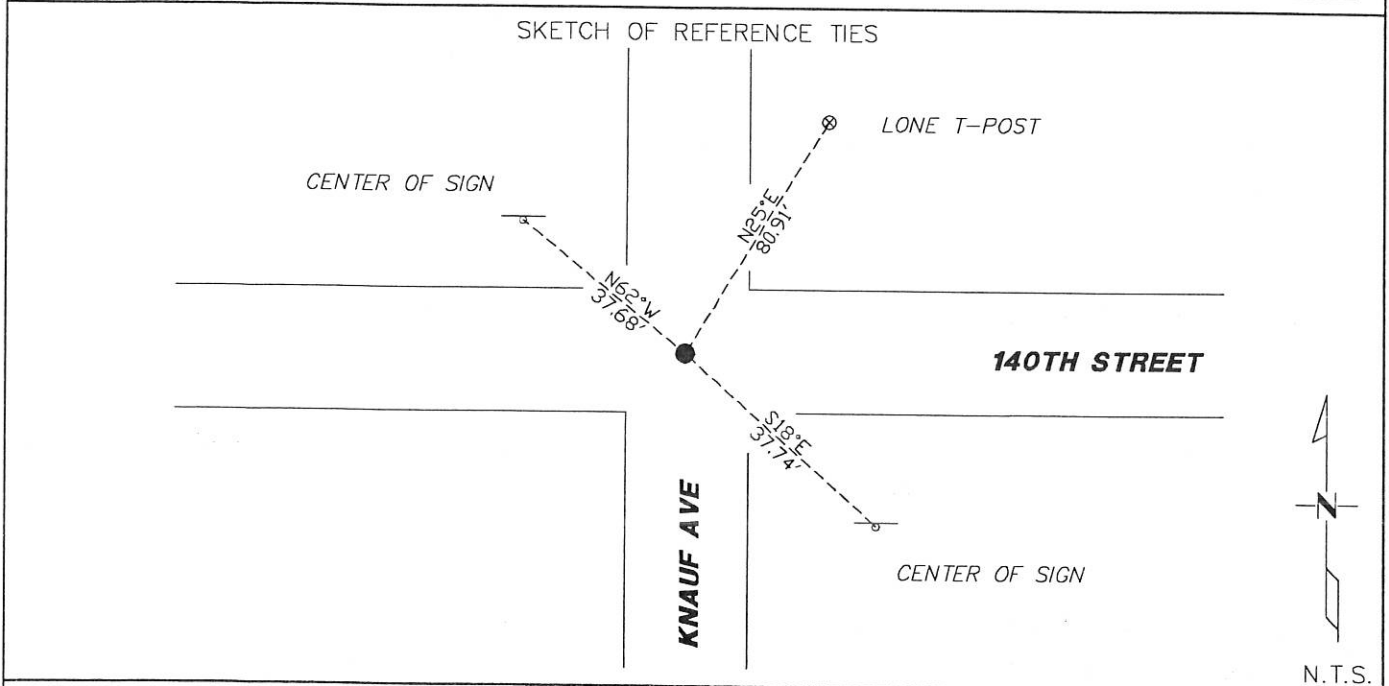
CERTIFICATE OF LOCATION OF GOVERNMENT CORNER

NORTHEAST Corner of Section 28, Township 104N, Range 41W

5th Principal Meridian, State of Minnesota, County of Nobles.

At the corner location shown on the sketch:

- ☐ On _____ found _____
DATE
- ☐ left monument as found ☐ lowered monument ☐ removed monument (explain)
- ☒ On 11/09/2017 placed a 5/8" REBAR CAPPED 49563 AT NORTH/SOUTHEAST/WEST
DATE
CENTERLINE INTERSECTION



Statement of evidence for this corner location is on back of this page.

I hereby certify that this document was researched and prepared by me or under my direct supervision and that I am a licensed Land Surveyor under the laws of the State of Minnesota.

Signature TSWL

Date 1/29/18 License No. 49563

Title:

- ☒ Land Surveyor ☐ Professional Engineer
- ☐ County Surveyor ☐ County Engineer

DOCUMENT NUMBER A 357588
Certified, Filed and or Recorded on
March 08, 2018 8:30 AM

Lynn M. Wilson

NOBLES COUNTY RECORDER
LYNN M. WILSON
507-295-5268

Statement of Evidence:

R-13

Northeast Corner of Section 28, Township 104 North, Range 41 West, 5th Principal Meridian, Nobles County, Minnesota.

1868-Deputy Surveyor Richard N. L. Jeorlt, set a post in mound with pits for the section corner.

1900-Nobles County Highway Department "Corner Ties Book" calls for a stone at the corner location.

1900-Surveyor's Record Book A-2, page 382, prepared by County Surveyor M.S. Smith shows a stone at the corner location.

1936-Nobles County Highway Department "Corner Ties Book" calls for a stake at the corner location.

1993-Nobles County Highway Department "Corner Ties Book" states DUG A 10' X 10' X 4' HOLE WITH A BACKHOE & FOUND NOTHING IN 1993 (MADSEN SURVEYING)

2017-On November 9th, Westwood Professional Services found nothing. N/S/E/W centerline intersection agrees with GLO distances. A 5/8" rebar capped 49563 was placed at the centerline intersection for the corner. Ties were set as shown on the front of this certificate.

Analysis of the recovered data, field evidence and survey measurements, indicates that the monument found is the correct perpetuation of this corner. For additional information concerning this corner please contact Westwood Professional Services.


8/1/2018