

SW sec 25 104 41

COPY

Index V-21

# CERTIFICATE OF LOCATION OF GOVERNMENT CORNER

NORTHEAST Corner of Section 35, Township 104N, Range 41W

5th Principal Meridian, State of Minnesota, County of Nobles.

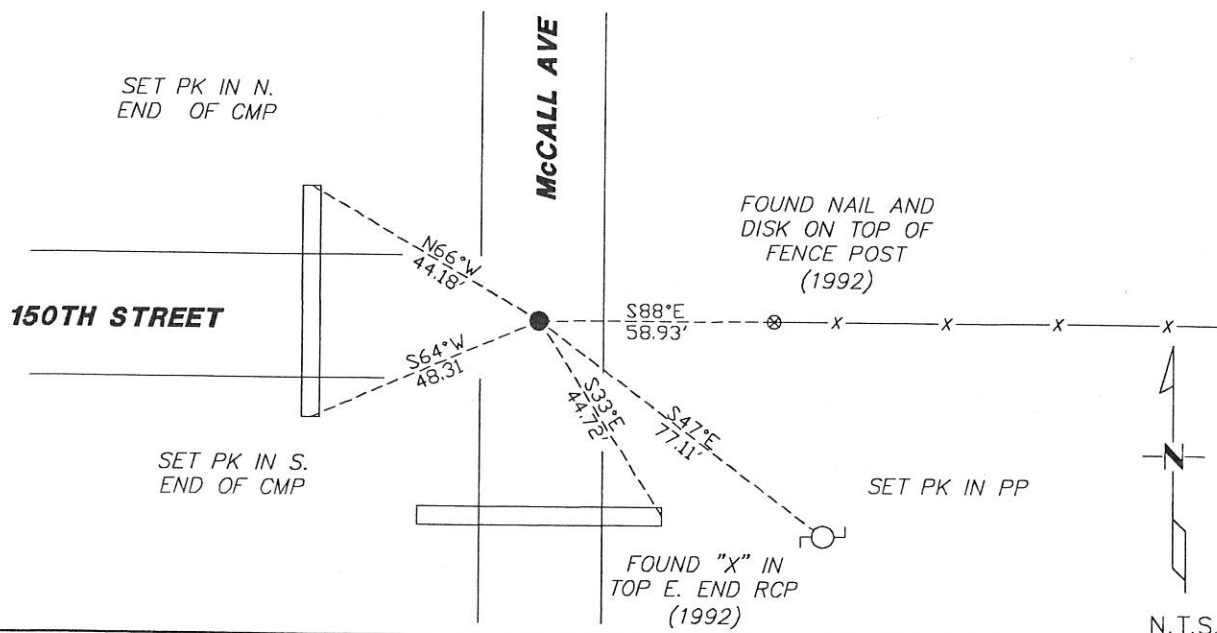
At the corner location shown on the sketch:

☒ On 11/08/2017 found a PK NAIL AT THE CENTERLINE INTERSECTION  
DATE

☒ left monument as found ☐ lowered monument ☐ removed monument (explain)

☐ On \_\_\_\_\_ placed a \_\_\_\_\_  
DATE

## SKETCH OF REFERENCE TIES



Statement of evidence for this corner location is on back of this page.

I hereby certify that this document was researched and prepared by me or under my direct supervision and that I am a licensed Land Surveyor under the laws of the State of Minnesota.

Signature Lynn M. Wilson

Date 1/29/18 License No. 49563

Title:

☒ Land Surveyor ☐ Professional Engineer  
☐ County Surveyor ☐ County Engineer

DOCUMENT NUMBER A 357611  
Certified, Filed and or Recorded on  
March 08, 2018 10:25 AM

Lynn M. Wilson

NOBLES COUNTY RECORDER  
LYNN M. WILSON  
507-295-5268

Pages: 2

**Statement of Evidence:**

V-21

Northeast Corner of Section 35, Township 104 North, Range 41 West, 5<sup>th</sup> Principal Meridian, Nobles County, Minnesota.

1868-Deputy Surveyor Richard N. L. Jeorlt, set a post in mound with pits for the section corner.

1919-On July 19th, 20th, and 21st, survey in Surveyors Record Book B, Page 121 shows a stone at the corner location.

1919-Nobles County Highway Department "Corner Ties Book" calls for a stone at the corner location.

1935-Nobles County Highway Department "Corner Ties Book" calls for a stone marking the corner location.

1953-Nobles County Highway Department "Corner Ties Book" calls for a stake marking the corner location.

1954-State Aid Road No. 14 plans shows corner 8' west of at Station 265+17.85.

1961-Nobles County Highway Department "Corner Ties Book" calls for a stake marking the corner location.

1980-Nobles County Highway Department "Corner Ties Book" states "Could not find"

1992-Nobles County Highway Department "Corner Ties Book" calls for a stake marking the corner location. Place iron pin.

1992-Nobles County Highway Department "Corner Ties Book" calls for an iron pin marking the corner location. Placed a 1-3/4" PK nail after a overlay. Corner is approximately 8' west of centerline.

Ties:

N&D IN COR FE POST E. 58.93'

"X" ON TOP OF CL CULV S.E. 44.72'

N&D IN COR FE POST S.W. 54.66'

2017-On November 8th, Westwood Professional Services found a PK nail. Pulled the PK and had a magnetic reading underneath but did not dig up the reading due to new bituminous. Found 2 out of the 3 highway department ties and fits S.A.R. No. 14. Accepting the found PK nail as the position of the corner and set 2 additional ties.