

CERTIFICATE OF LOCATION OF GOVERNMENT CORNER

NORTHEAST Corner of Section 34, Township 104N, Range 41W

5th Principal Meridian, State of Minnesota, County of Nobles.

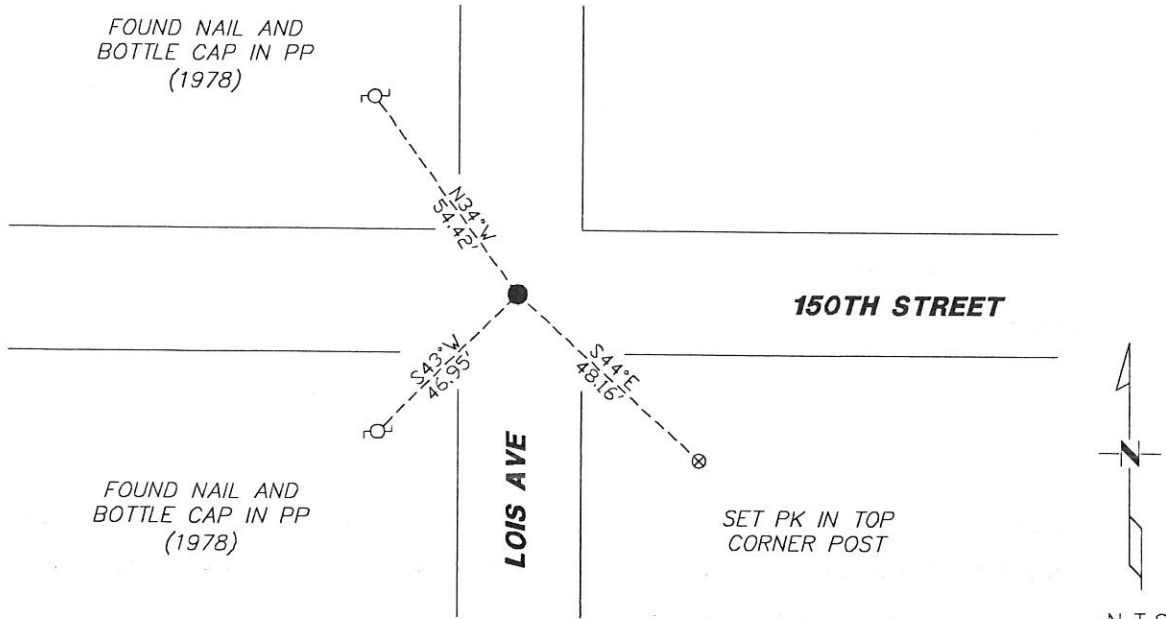
At the corner location shown on the sketch:

On 11/08/2017 found a 5/8" REBAR AT THE CENTERLINE INTERSECTION
DATE

left monument as found lowered monument removed monument (explain)

On _____ placed a _____
DATE

SKETCH OF REFERENCE TIES



Statement of evidence for this corner location is on back of this page.

I hereby certify that this document was researched and prepared by me or under my direct supervision and that I am a licensed Land Surveyor under the laws of the State of Minnesota.

Signature *[Handwritten Signature]*

Date 1/29/18 License No. 49563

Title:

- Land Surveyor Professional Engineer
- County Surveyor County Engineer

DOCUMENT NUMBER A 357608
Certified, Filed and or Recorded on
March 08, 2018 10:10 AM

[Handwritten Signature: Lynn M. Wilson]

NOBLES COUNTY RECORDER
LYNN M. WILSON
507-295-5268

Statement of Evidence:

V-17

Northeast Corner of Section 34, Township 104 North, Range 41 West, 5th Principal Meridian, Nobles County, Minnesota.

1868-Deputy Surveyor Richard N. L. Jeorlt, set a post in mound with pits for the section corner.

1936-Nobles County Highway Department "Corner Ties Book" calls for a stone at the corner location.

1978-Nobles County Highway Department "Corner Ties Book" calls for a stone at the corner location.
Placed iron pin.

Ties:

N&D IN PP N.W. 54.42'

N&D IN PP S.E. 34.15'

N&D IN PP S.W. 46.95'

2017-On November 8th, Westwood Professional Services found a No. 5 rebar and 2 of the 3 Nobles County Highway Department ties, which fit. Monument fits GLO distance to the NE corner of Sec. 35 T.104 R.41 within 1 foot. Accepting the found No. 5 rebar as the position of the corner and set 1 additional tie.

Analysis of the recovered data, field evidence and survey measurements, indicates that the monument found is the correct perpetuation of this corner. For additional information concerning this corner please contact Westwood Professional Services.

[Handwritten signature]
11/28/17