

125 SW Sec 30 104 41

COPY

Index V-25

CERTIFICATE OF LOCATION OF GOVERNMENT CORNER

NORTHEAST Corner of Section 36, Township 104N, Range 42W

5th Principal Meridian, State of Minnesota, County of Nobles.

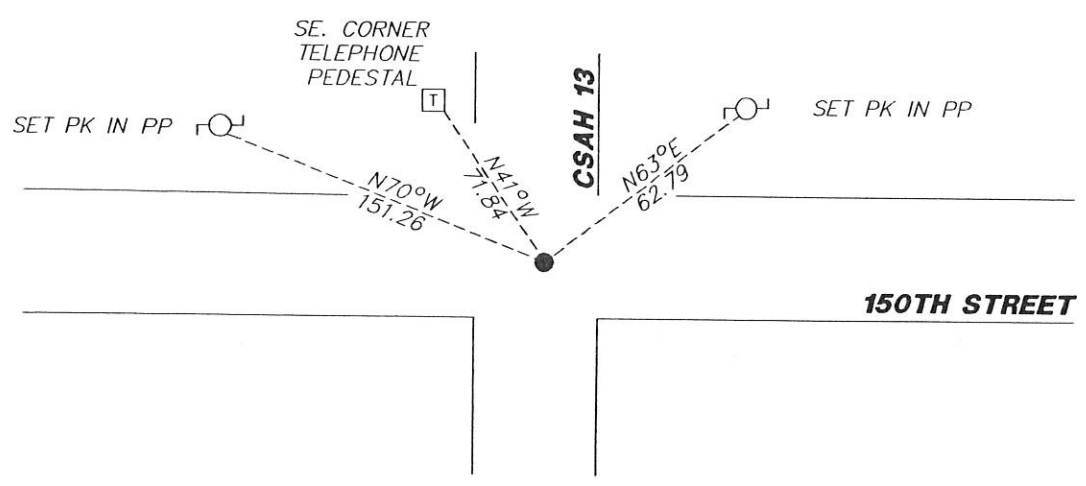
At the corner location shown on the sketch:

On 11/09/2017 found a 1/2" REBAR THAT LANDS ON CENTERLINE INTERSECTION.
DATE

left monument as found lowered monument removed monument (explain)

On _____ placed a _____
DATE

SKETCH OF REFERENCE TIES



N.T.S.

Statement of evidence for this corner location is on back of this page.

I hereby certify that this document was researched and prepared by me or under my direct supervision and that I am a licensed Land Surveyor under the laws of the State of Minnesota.

Signature L.M. Wilson

Date 2/7/18 License No. 49563

Title:

- Land Surveyor Professional Engineer
- County Surveyor County Engineer

DOCUMENT NUMBER A 357544
Certified, Filed and or Recorded on
March 07, 2018 10:30 AM

Lynn M. Wilson

NOBLES COUNTY RECORDER,
LYNN M. WILSON
507-295-5268

Pages: 2

Statement of Evidence:

V-25

Northeast Corner of Section 36, Township 104 North, Range 42 West, 5th Principal Meridian, Nobles County, Minnesota.

1868-T.B. Walker set a post in mound with pits for the section corner

1900-On May 14th, 15th and 16th, survey completed by M.S. Smith, County Surveyor, in Surveyors Record Book A-2, Page 358, shows original stake at the corner location. Set a stone. Distance shown to the N1/4 of Sec. 36 T.104 R.42 is 2629.5 ft.

1900-Nobles County Highway Department "Corner Ties Book" calls for a stone being set at the corner position.

1923-Nobles County Highway Department "Corner Ties Book" calls for a stone as the corner position.

1938-Nobles County Highway Department "Corner Ties Book" calls for a stone as the corner position.

1950-Nobles County Highway Department "Corner Ties Book" calls for an iron pin as the corner position. Placed a wood stake.

1951-C.S.A.H. No. 13 highway plans shows a stone 7.0 ft. East of Station 53+00.4

1980-Nobles County Highway Department "Corner Ties Book" calls for an iron pin as the corner position.

1993-Nobles County Highway Department "Corner Ties Book" calls for raising iron pin at the corner position.

1994-Nobles County Highway Department "Corner Ties Book" calls for a 1-3/4" PK nail being placed at the corner position after an overlay.

2017-On November 9th, Westwood Professional Services found a No. 4 rebar at the centerline intersection. Ties were found or set as shown on the front of this certificate.

Analysis of the recovered data, field evidence and survey measurements, indicates that the monument found is the correct perpetuation of this corner. For additional information concerning this corner please contact Westwood Professional Services.

8/1/15