

RS

SW sec 34 104 41

COPY

Index A-13

CERTIFICATE OF LOCATION OF GOVERNMENT CORNER

NORTHEAST Corner of Section 4, Township 103N, Range 41W

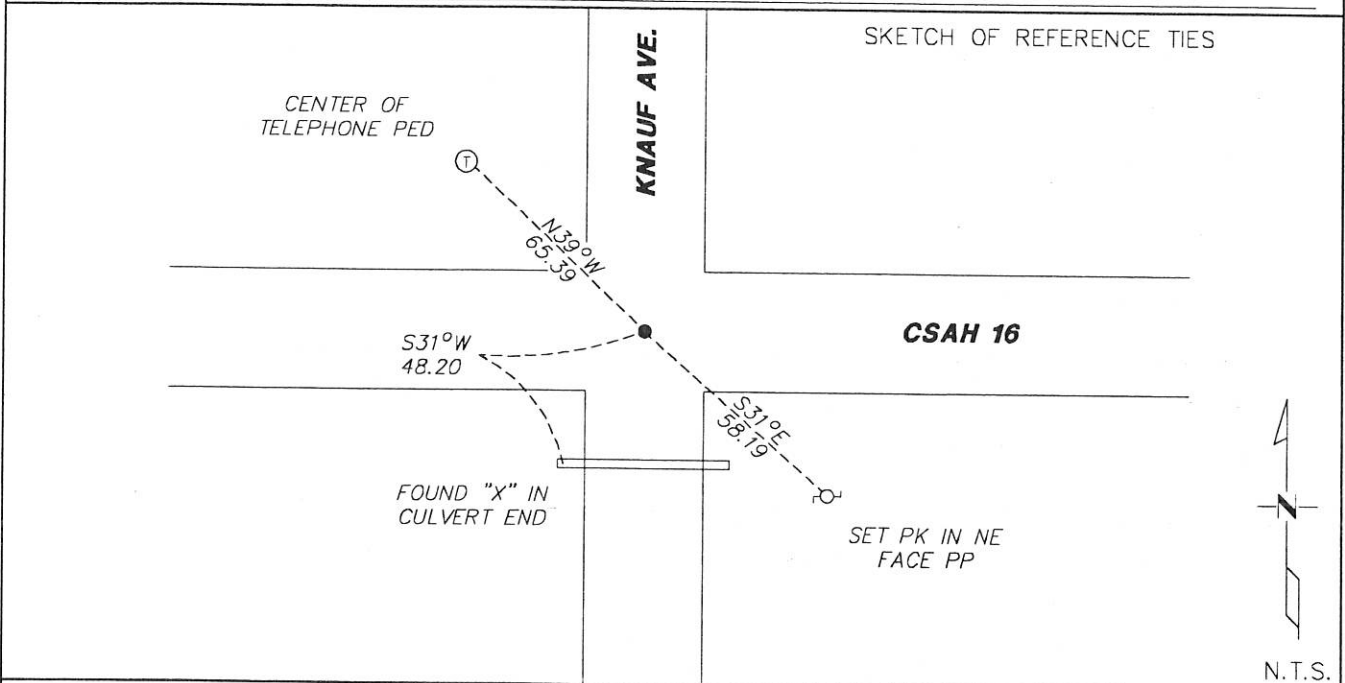
5th Principal Meridian, State of Minnesota, County of Nobles.

At the corner location shown on the sketch:

On 11/8/17 found a PK NAIL AN THE CENTERLINE INTERESECTION
DATE

left monument as found lowered monument removed monument (explain)

On _____ placed a _____
DATE



Statement of evidence for this corner location is on back of this page.

I hereby certify that this document was researched and prepared by me or under my direct supervision and that I am a licensed Land Surveyor under the laws of the State of Minnesota.

Signature TJWL

Date 1/11/18 License No. 49563

Title:

- Land Surveyor Professional Engineer
- County Surveyor County Engineer

DOCUMENT NUMBER A 397454
Certified, Filed and or Recorded on
March 09, 2018 9:03 AM

Lynn Wilson RS

NOBLES COUNTY RECORDER
LYNN M. WILSON
507-295-5258

Statement of Evidence:

A-13

Northeast Corner of Section 4, Township 103 North, Range 41 West, 5th Principal Meridian, Nobles County, Minnesota.

1867-Deputy Surveyor set a post in mound with pits.

1937-Nobles County Highway Department "Corner Ties Book" calls for a stake marking the corner location.

1951-Nobles County Highway Department "Corner Ties Book" calls for a stone with stake marking the corner location.

1989-State Aid Road No. 16 plans shows corner at Station 105+74.66

1990-Nobles County Highway Department "Corner Ties Book" calls for a 3/4" x 18" rebar being placed.

1991-Nobles County Highway Department "Corner Ties Book" calls for a steel pin rebar being placed.

2006- On February 21st, Ulteig Engineers, Inc. survey crew, Dennis Lavallie Party Chief found a 1" iron in asphalt at the intersection. Corner record is filed by Thomas V. Zeff, LS No. 44563, as Doc. 311117 in the County Records Office.

2008-A survey dated 4/21/08 prepared by Perry L. Zieske, for project number N 0805 S, shows a iron monument being in place for the corner position. The survey also shows a distance of 2647.47 to the S1/4 of Sec. 34 T.104 R41 (N1/4 of Sec. 3 T.103 R41)

2013-A survey dated 12/12/2013 prepared by Perry L. Zieske, for project number N 1318 SB, shows a iron monument being in place for the corner position. The survey also shows a distance of 2647.46 to the S1/4 of Sec. 34 T.104 R41 (N1/4 of Sec. 3 T.103 R41).

2013-Nobles County Highway Department "Corner Ties Book" calls for a iron monument in place.

2014-A survey dated 2/18/2014 prepared by Perry L. Zieske, for project number N 1318 SB, shows a iron monument being in place for the corner position. The survey also shows a distance of 2647.46 to the S1/4 of Sec. 34 T.104 R41 (N1/4 of Sec. 3 T.103 R41).

2017-On November 8th, Westwood Professional Services found a PK nail and highway dept. ties. Monument fits S.A.R. No. 16 plans and Mr. Zieske surveys. Accepting the found PK nail as the position of the corner. Ties were found or set as shown on the front of this certificate.