

SW
Sec 36
104
41

COPY

Index A-21

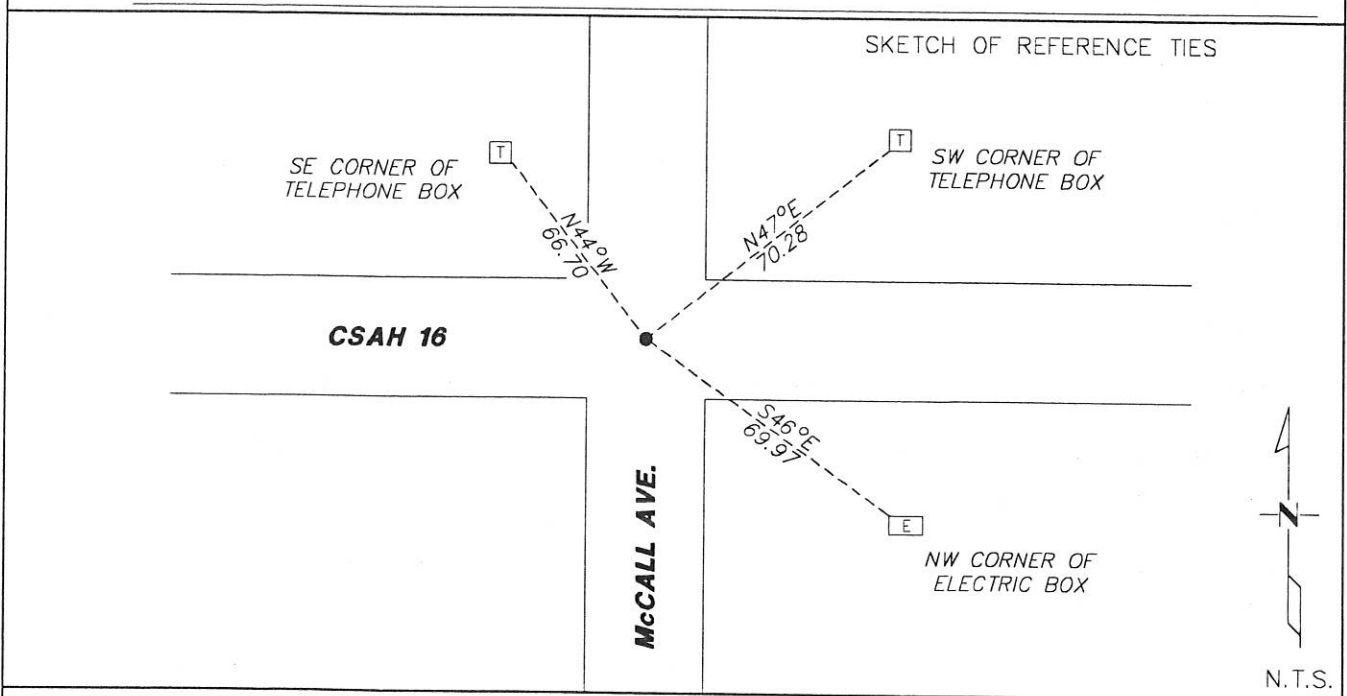
CERTIFICATE OF LOCATION OF GOVERNMENT CORNER

NORTHEAST Corner of Section 2, Township 103N, Range 41W

5th Principal Meridian, State of Minnesota, County of Nobles.

At the corner location shown on the sketch:

- On 11/8/17 found a PK NAIL AT THE CENTERLINE INTERESECTION
- left monument as found lowered monument removed monument (explain)
- On _____ placed a _____



Statement of evidence for this corner location is on back of this page.

I hereby certify that this document was researched and prepared by me or under my direct supervision and that I am a licensed Land Surveyor under the laws of the State of Minnesota.

Signature Lynn M. Wilson

Date 11/11/18 License No. 49563

Title:

- Land Surveyor Professional Engineer
- County Surveyor County Engineer

DOCUMENT NUMBER A 357458
Certified, Filed and or Recorded on
March 05, 2018 9:23 AM

Lynn M. Wilson RS

NOBLES COUNTY RECORDER
LYNN M. WILSON
507-295-5288

Statement of Evidence:

A-21

Northeast Corner of Section 2, Township 103 North, Range 41 West, 5th Principal Meridian, Nobles County, Minnesota.

1868-Deputy Surveyor Thomas B. Walker set a post in mound with pits for the section corner.

Date Unknown-Surveyor's Record Book B, page 185, prepared by County Surveyor G.D McMortry shows a stone at the corner location.

1919-Nobles County Highway Department "Corner Ties Book" calls for a stone marking the corner location.

1937-Nobles County Highway Department "Corner Ties Book" calls for a stone marking the corner location.

1953-Nobles County Highway Department "Corner Ties Book" calls for a stone marking the corner location.

1954-State Aid Road No. 14 plans shows a stone with stake on top at Station 212+22.55.

1959-Nobles County Highway Department "Corner Ties Book" calls for a stone marking the corner location. Place wood stake.

1961-Nobles County Highway Department "Corner Ties Book" calls for a stake marking the corner location. Placed iron pin.

1980-Nobles County Highway Department "Corner Ties Book" calls for a iron pin marking the corner location.

1989-State Aid Road No. 16 plans shows corner at Station 211+48.49.

1992-Nobles County Highway Department "Corner Ties Book" calls for a iron pin marking the corner location. Placed a 1-3/4" PK nail after an overlay.

2017-On November 7th, Westwood Professional Services found a PK nail. Pulled the PK and had a magnetic reading underneath but did not dig up due to new bituminous. The monument agrees with record survey distances and highway plans. Accepting the found PK nail as the position of the corner and set 3 additional ties.