

# CERTIFICATE OF LOCATION OF GOVERNMENT CORNER

NORTHEAST Corner of Section 12, Township 104N, Range 42W

5th Principal Meridian, State of Minnesota, County of Nobles.

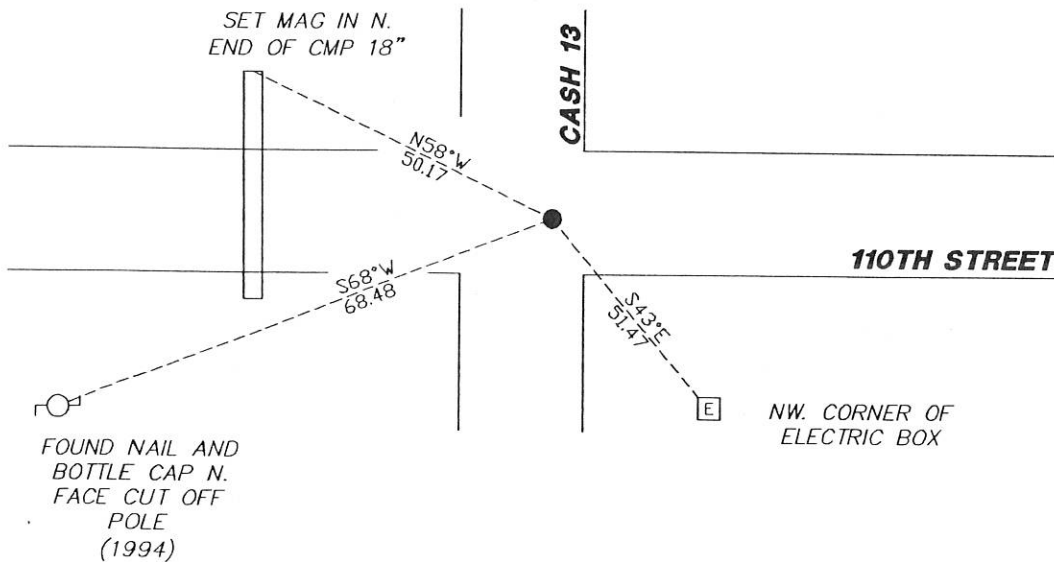
At the corner location shown on the sketch:

On 11/28/2017 found a 1/2" REBAR 12' +/- EAST OF CENTERLINE OF NORTH / SOUTH  
DATE BITUMINOUS ROADWAY.

left monument as found       lowered monument       removed monument (explain)

On \_\_\_\_\_ placed a \_\_\_\_\_  
DATE

### SKETCH OF REFERENCE TIES



N.T.S.

Statement of evidence for this corner location is on back of this page.

I hereby certify that this document was researched and prepared by me or under my direct supervision and that I am a licensed Land Surveyor under the laws of the State of Minnesota.

Signature *L.M. Wilson*

Date 2/7/18 License No. 49563

Title:

- Land Surveyor       Professional Engineer
- County Surveyor       County Engineer

DOCUMENT NUMBER A 357484  
Certified, Filed and or Recorded on  
March 05, 2018 11:20 AM

*Lynn M. Wilson*

NOBLES COUNTY RECORDER  
LYNN M. WILSON  
507-295-5268

Pages: 2

**Statement of Evidence:**

E-25

Northeast Corner of Section 12, Township 104 North, Range 42 West, 5<sup>th</sup> Principal Meridian, Nobles County, Minnesota.

1868-Deputy Surveyor set a post in mound with pits

1894- Nobles County Highway Department "Corner Ties Book" calls for a stone set marking the corner location.

1923 - Nobles County Highway Department "Corner Ties Book" notes a stone marking the corner location.

1950 - Nobles County Highway Department "Corner Ties Book" notes an iron pin marking the corner location.

1951 - CSAH13 highway plans show a station of 264+95.8 and 12.6' east of the centerline. Distance south per stationing is 2653.9

1960 - Nobles County Highway Department "Corner Ties Book" notes an iron pin marking the corner location.

1979 - MNDOT ROW plans note the corner 12.6 east of centerline of CSAH13. Station is 0+00. Measurement is 2360.25 to the N1/4 of 7. However, this stationing does not add up. The overall mile (to the NE7) is 5106.09.

1980 - Nobles County Highway Department "Corner Ties Book" notes an iron pin marking the corner location.

1993 - Nobles County Highway Department "Corner Ties Book" notes the iron pin raised.

1994 - Nobles County Highway Department "Corner Ties Book" notes a 1 3/4" PK nail placed after overlay and 12.6' east of the centerline of the road.

2017-On November 28th, Westwood Professional Services recovered a 1/2" rebar 12' east of the centerline intersection and one tie from 1994. Ties were found or set as shown on the front of this certificate.

Analysis of the recovered data, field evidence and survey measurements, indicates that the monument found is the correct perpetuation of this corner. For additional information concerning this corner please contact Westwood Professional Services.