

SW
Sec 7
104 41

COPY

Index J-25

CERTIFICATE OF LOCATION OF GOVERNMENT CORNER

NORTHEAST _____ Corner of Section 13, Township 104N, Range 42W

5th Principal Meridian, State of Minnesota, County of Nobles.

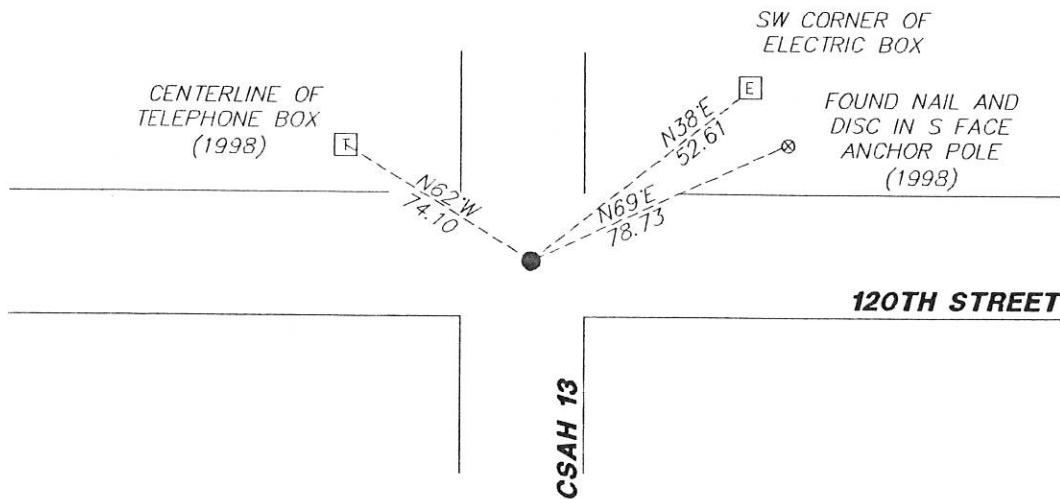
At the corner location shown on the sketch:

On 11/29/2017 found a PK NAIL AT CENTERLINE INTERSECTION.
DATE

left monument as found lowered monument removed monument (explain)

On _____ placed a _____
DATE

SKETCH OF REFERENCE TIES



Statement of evidence for this corner location is on back of this page.

I hereby certify that this document was researched and prepared by me or under my direct supervision and that I am a licensed Land Surveyor under the laws of the State of Minnesota.

Signature Lynn Wilson

Date 2/7/18 License No. 49563

Title:

- Land Surveyor Professional Engineer
 County Surveyor County Engineer

DOCUMENT NUMBER A 357487
Certified, Filed and or Recorded on
March 06, 2018 11:35 AM

Lynn Wilson

NOBLES COUNTY RECORDER
LYNN M. WILSON
507-295-5268

Statement of Evidence:

J-25

Northeast Corner of Section 13, Township 104 North, Range 42 West, 5th Principal Meridian, Nobles County, Minnesota.

1868-Deputy Surveyor set a post in mound with pits

1896 - Nobles County Highway Department "Corner Ties Book" notes a stake marking the corner location. A distance of 2548 is given to the N1/4 18.

1923 - Nobles County Highway Department "Corner Ties Book" notes an iron pin marking the corner location.

1950 - Nobles County Highway Department "Corner Ties Book" notes a stake marking the corner location.

1951 - CSAH No. 13 highway plans shows an iron pin at station 211+94.5 and measurements of 2657.55 to the E1/4 of 13 and 2647.40 to the E1/4 of 12.

1960 - Nobles County Highway Department "Corner Ties Book" notes a stake marking the corner location and an iron pin placed.

1980 - Nobles County Highway Department "Corner Ties Book" notes an iron pin marking the corner location.

1993 - Nobles County Highway Department "Corner Ties Book" raises the iron pin marking the corner location.

1994 - Nobles County Highway Department "Corner Ties Book" notes a 1 3/4" PK nail placed after an overlay.

1998 - Nobles County Highway Department "Corner Ties Book" notes Madsen Land Surveying found the PK nail and detected metal under the PK.

2017-On November 29th, Westwood Professional Services recovered a PK nail and two previous ties. Westwood measures 2550.21 to the N1/4 18 which agrees with 1896 measurements and CSAH13 highway plans. Ties were found or set as shown on the front of this certificate

Analysis of the recovered data, field evidence and survey measurements, indicates that the monument found is the correct perpetuation of this corner. For additional information concerning this corner please contact Westwood Professional Services.