

COPY

Index J-9

CERTIFICATE OF LOCATION OF GOVERNMENT CORNER

NORTHEAST Corner of Section 17, Township 104N, Range 41W

5th Principal Meridian, State of Minnesota, County of Nobles.

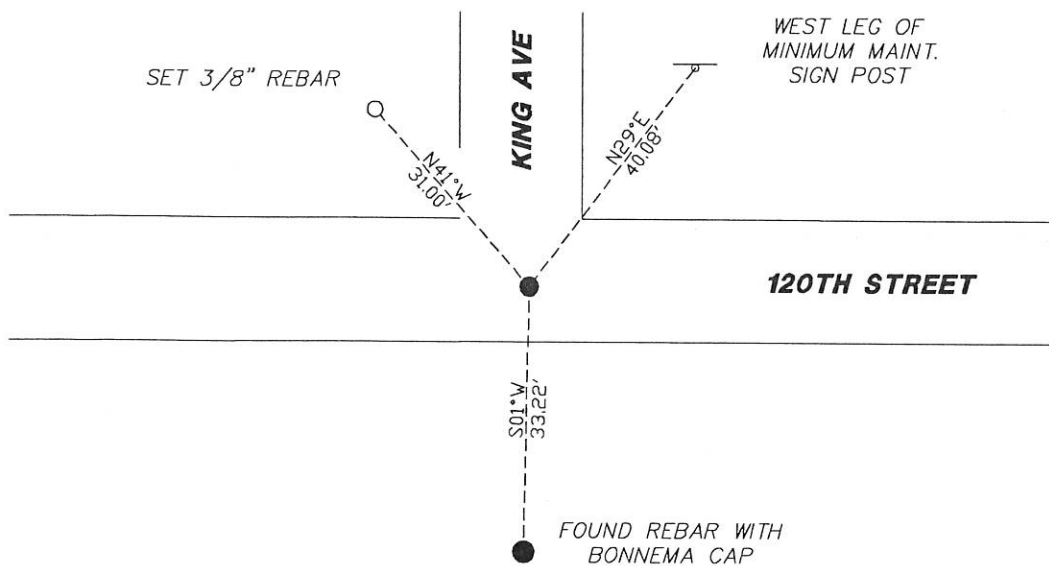
At the corner location shown on the sketch:

☒ On 11/29/2017 found a IRON PIPE CAPPED LS 11943 DOWN 0.7'

☒ left monument as found ☐ lowered monument ☐ removed monument (explain)

☐ On _____ placed a _____

SKETCH OF REFERENCE TIES



N.T.S.

Statement of evidence for this corner location is on back of this page.

I hereby certify that this document was researched and prepared by me or under my direct supervision and that I am a licensed Land Surveyor under the laws of the State of Minnesota.

Signature TSWL

Date 1/29/18 License No. 49563

Title:

☒ Land Surveyor ☐ Professional Engineer
☐ County Surveyor ☐ County Engineer

DOCUMENT NUMBER A 357574

Certified, Filed and or Recorded on

March 07, 2018 3:15 PM

Lynn Wilson

NOBLES COUNTY RECORDER

LYNN M. WILSON

507-295-5268

Pages: 2

Statement of Evidence:

J-9

Northeast Corner of Section 17, Township 104 North, Range 41 West, 5th Principal Meridian, Nobles County, Minnesota.

1868-Deputy Surveyor set a post in mound with pits.

1939 - Nobles County Highway Department "Corner Ties Book" notes a stake marking the corner location.

1990 - Lyle Moseng, LS 11943, has a survey showing a 1" pipe with seal in place for the corner.

2017 - Matthew Runke, LS 46171, files Certificate of Location as Document Number 354950 and gives measurements around section 17

2017-On November 29th, Westwood Professional Services recovered an iron pipe with LS 11943 cap down 0.7'. Adjacent measurements fit measurements on 2017 Runke survey. Ties were found or set as shown on the front of this certificate.

Analysis of the recovered data, field evidence and survey measurements, indicates that the monument found is the correct perpetuation of this corner. For additional information concerning this corner please contact Westwood Professional Services.

[Handwritten signature]
01/25/11