

23

W1/4 sec 1

104 41

CERTIFICATE OF LOCATION OF GOVERNMENT CORNER

EAST QUARTER Corner of Section 2, Township 104N, Range 41W

5th Principal Meridian, State of Minnesota, County of Nobles.

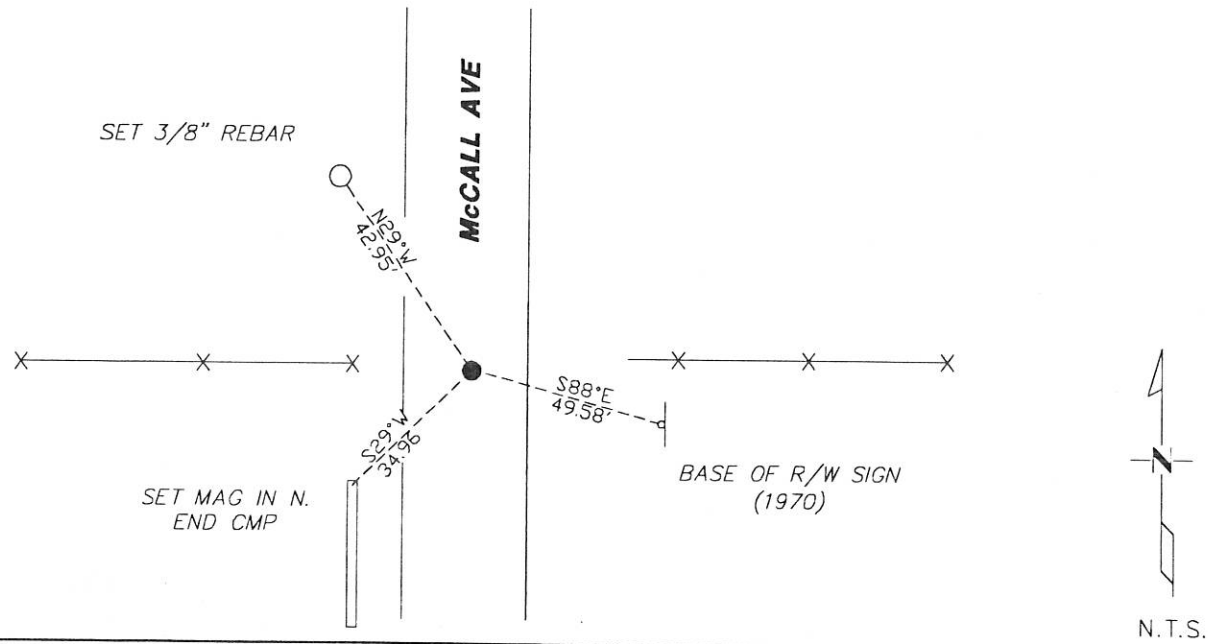
At the corner location shown on the sketch:

☒ On 11/28/2017 found a 5/8" REBAR FLUSH IN BITUMINOUS ROADWAY.
DATE

☒ left monument as found ☐ lowered monument ☐ removed monument (explain)

☐ On _____ placed a _____
DATE

SKETCH OF REFERENCE TIES



Statement of evidence for this corner location is on back of this page.

I hereby certify that this document was researched and prepared by me or under my direct supervision and that I am a licensed Land Surveyor under the laws of the State of Minnesota.

Signature TS Wilson

Date 1/29/18 License No. 49563

Title:

☒ Land Surveyor ☐ Professional Engineer
☐ County Surveyor ☐ County Engineer

DOCUMENT NUMBER A 357547
Certified, Filed and or Recorded on
March 07, 2018 1:00 PM

Lynn Wilson

NOBLES COUNTY RECORDER
LYNN M. WILSON
507-295-5268

Pages: 2

Statement of Evidence:

C-21

East Quarter Corner of Section 2, Township 104 North, Range 41 West, 5th Principal Meridian, Nobles County, Minnesota.

1868-Deputy Surveyor set a post in mound with pits.

1903 - In Book 22, Page 130, the County Surveyor's section breakdown does not indicate the type of monument, but gives distances to the following corners:

2452.0' to the NE of 2

2654.0' to the SE of 2

1962 - Nobles County Highway Department "Corner Ties Book" calls for a stake marking the corner location.

1970 - Nobles County Highway Department "Corner Ties Book" calls for an iron pipe marking the corner location and the following ties were made:

2x2 hub	SW	30.41'
---------	----	--------

Face of R/W sign	East	49.58'
------------------	------	--------

1992 - MNDOT ROW plans indicate stationing of 132+41.2. Measurement to the SE of 2 is 2655.38 and 2446.22 to the NE of 2.

2017-On November 28th, Westwood Professional Services recovered a 5/8" rebar flush in bituminous roadway and one tie from 1970. Westwood measures 2446.20' to the NE corner of Section 2 and 2654.94' to the SE corner of Section 2. Measurements agree with record measurements. Ties were found or set as shown on the front of this certificate.

Analysis of the recovered data, field evidence and survey measurements, indicates that the monument found is the correct perpetuation of this corner. For additional information concerning this corner please contact Westwood Professional Services.

3/1/2011