

CERTIFICATE OF LOCATION OF GOVERNMENT CORNER

EAST QUARTER Corner of Section 11, Township 104N, Range 41W
5th Principal Meridian, State of Minnesota, County of Nobles.

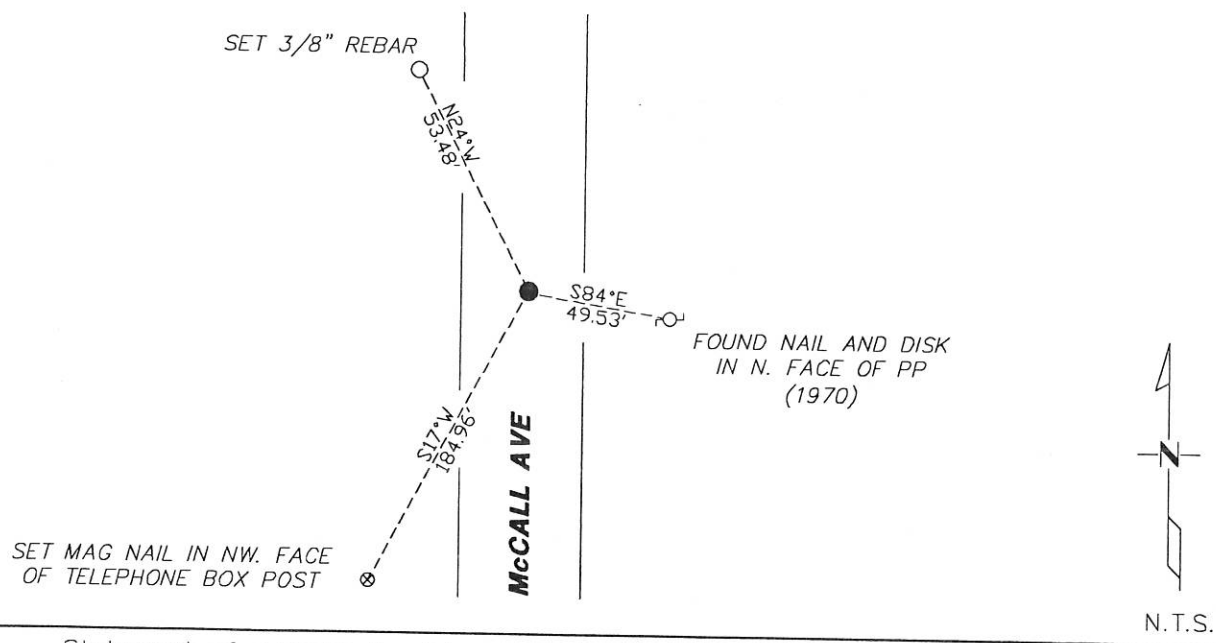
At the corner location shown on the sketch:

☒ On 11/28/2017 found a 5/8" REBAR FLUSH WITH ROADWAY SURFACE.

☒ left monument as found ☐ lowered monument ☐ removed monument (explain)

☐ On DATE placed a

SKETCH OF REFERENCE TIES



Statement of evidence for this corner location is on back of this page.

I hereby certify that this document was researched and prepared by me or under my direct supervision and that I am a licensed Land Surveyor under the laws of the State of Minnesota.

Signature [Signature]
Date 1/29/18 License No. 49563

Title:

☒ Land Surveyor ☐ Professional Engineer
☐ County Surveyor ☐ County Engineer

DOCUMENT NUMBER A 357566
Certified, Filed and or Recorded on
March 07, 2018 2:35 PM

[Signature]

NOBLES COUNTY RECORDER
LYNN M. WILSON
507-295-5268

Pages: 2

Statement of Evidence:

G-21

East Quarter Corner of Section 11, Township 104 North, Range 41 West, 5th Principal Meridian, Nobles County, Minnesota.

1868-Deputy Surveyor set a post in mound with pits.

1928 - Nobles County Highway Department "Corner Ties Book" calls for a stone marking the corner location.

1962 - Nobles County Highway Department "Corner Ties Book" calls for a stone marking the corner location.

1970 - Nobles County Highway Department "Corner Ties Book" notes an iron pipe marking the corner location. The following ties were made:

N/D in power pole	East	49.53'
N/D in power pole	WSW	49.32'

1992 - MNDOT ROW plans indicate a station of 79+45.94. Distance to SE 11 is 2652.81 and 2639.80 to the NE 11.

2017-On November 28th, Westwood Professional Services recovered a 5/8" rebar flush with the surface and one tie to the easterly power pole from 1970. Westwood measures 2652.43 to the SE11 and 2639.04 to the NE11. Location fits 1970 and MNDOT measurements. Ties were found or set as shown on the front of this certificate.

Analysis of the recovered data, field evidence and survey measurements, indicates that the monument found is the correct perpetuation of this corner. For additional information concerning this corner please contact Westwood Professional Services.

[Handwritten signature]
8/19/11