

COPY

Index P-25

# CERTIFICATE OF LOCATION OF GOVERNMENT CORNER

EAST QUARTER Corner of Section 24, Township 104N, Range 42W

5th Principal Meridian, State of Minnesota, County of Nobles.

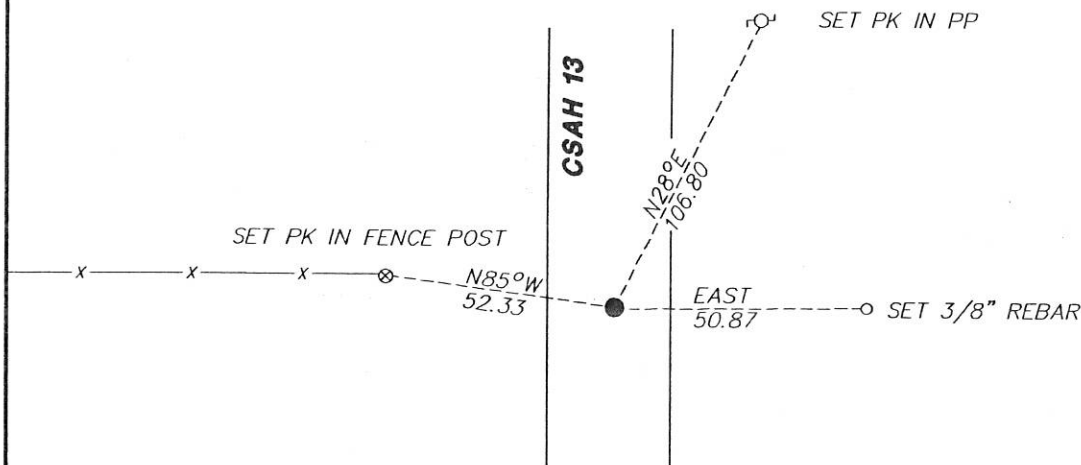
At the corner location shown on the sketch:

☒ On 11/10/2017 found NOTHING.

☐ left monument as found ☐ lowered monument ☐ removed monument (explain)

☒ On 11/09/2017 placed a 5/8" IRON CAPPED LS 49563 AT CENTERLINE AND FENCE RUNNING WEST.

## SKETCH OF REFERENCE TIES



N.T.S.

Statement of evidence for this corner location is on back of this page.

I hereby certify that this document was researched and prepared by me or under my direct supervision and that I am a licensed Land Surveyor under the laws of the State of Minnesota.

Signature L.M. Wilson

Date 2/7/18 License No. 49563

Title:

☒ Land Surveyor ☐ Professional Engineer  
☐ County Surveyor ☐ County Engineer

DOCUMENT NUMBER A 357517  
 Certified, Filed and or Recorded on  
 March 07, 2018 8:20 AM

Lynn M. Wilson

NOBLES COUNTY RECORDER  
 LYNN M. WILSON  
 507-295-5268

Pages: 2

**Statement of Evidence:**

P-25

East Quarter Corner of Section 24, Township 104 North, Range 42 West, 5<sup>th</sup> Principal Meridian, Nobles County, Minnesota.

1868-Deputy Surveyor set a post in mound with pits

1900-Nobles County Highway Department "Corner Ties Book" calls for a stone as the corner position.

1923-Nobles County Highway Department "Corner Ties Book" calls for a stone as the corner position.

1950-Nobles County Highway Department "Corner Ties Book" calls for an iron pin as the corner position.

1951-C.S.A.H. No. 13 highway plans shows a I.P. 4.0 ft. west of Station 105+92.6

1969-Minnesota Conservation Department completed a survey in the SW1/4 of Sec. 19 T.104 R.41, file no. G-502. Distance between the SW corner and the W1/4 corner (set R.R. spike) is shown to be 2646.22 ft.

1980-Nobles County Highway Department "Corner Ties Book" states "could not find".

1993-Nobles County Highway Department "Corner Ties Book" calls for a found railroad spike below pavement 6' RT of centerline. Left as found.

2011-Nobles County Highway Department "Corner Ties Book" calls for a found iron pin as the corner position.

2017-On November 9th, Westwood Professional Services searched on N/S centerline and online with a fence running west. Set 5/8" iron with LS 49563 cap at centerline and fence west location. This location fits well with the proportionate location. Ties were found or set as shown on the front of this certificate.

Analysis of the recovered data, field evidence and survey measurements, indicates that the monument found is the correct perpetuation of this corner. For additional information concerning this corner please contact Westwood Professional Services.

8/17/12