

COPY

Index P-5

CERTIFICATE OF LOCATION OF GOVERNMENT CORNER

EAST QUARTER Corner of Section 19, Township 104N, Range 41W

5th Principal Meridian, State of Minnesota, County of Nobles.

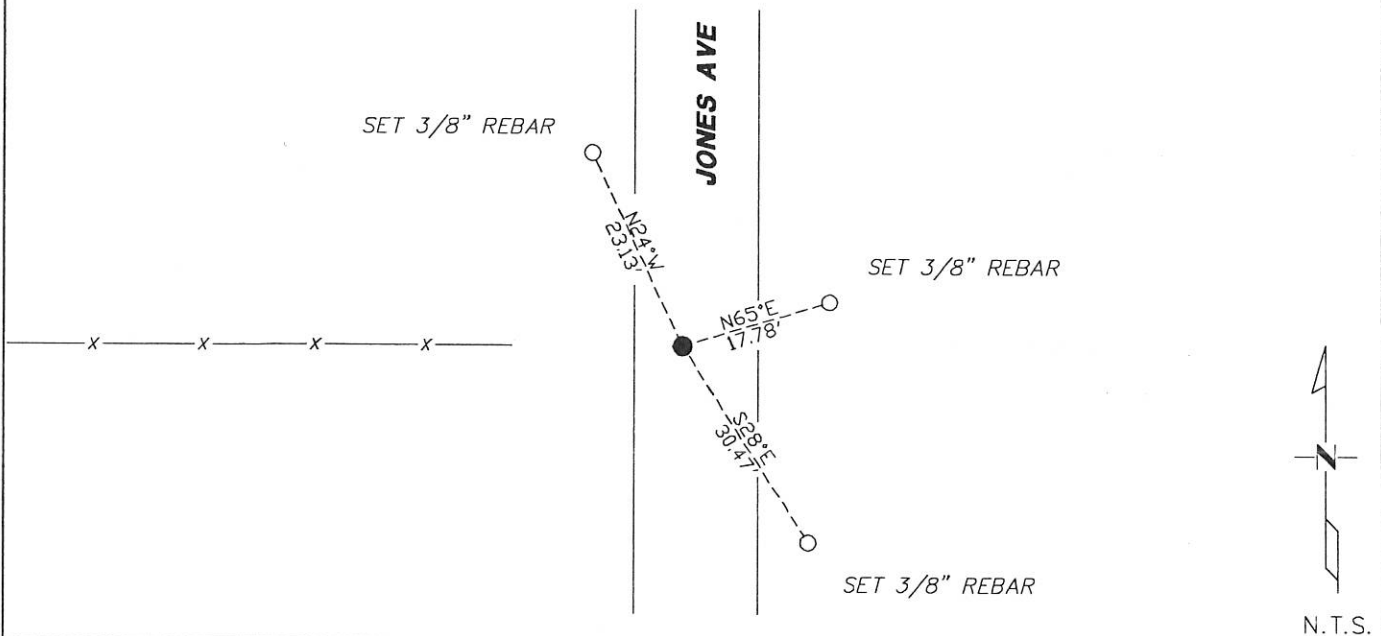
At the corner location shown on the sketch:

☒ On 11/10/2017 found a 1/2" OPEN IRON PIPE +/- 3 FT WEST OF NORTH/SOUTH
DATE
CENTERLINE AND ON LINE WITH FENCE RUNNING WEST.

☒ left monument as found ☐ lowered monument ☐ removed monument (explain)

☐ On _____ placed a _____
DATE

SKETCH OF REFERENCE TIES



Statement of evidence for this corner location is on back of this page.

I hereby certify that this document was researched and prepared by me or under my direct supervision and that I am a licensed Land Surveyor under the laws of the State of Minnesota.

Signature TSWL

Date 1/29/18 License No. 49563

Title:

☒ Land Surveyor ☐ Professional Engineer
☐ County Surveyor ☐ County Engineer

DOCUMENT NUMBER A 357578
Certified, Filed and or Recorded on
March 07, 2018 3:35 PM

Lynn Wilson

NOBLES COUNTY RECORDER
LYNN M. WILSON
507-295-5268

Pages: 2

Statement of Evidence:

P-5

East Quarter Corner of Section 19, Township 104 North, Range 41 West, 5th Principal Meridian, Nobles County, Minnesota.

1868-Deputy Surveyor Richard N. L. Jeorlt, set a post in mound with pits for the section corner.

1895-On September 16th, in Surveyor's Record Book A-2, page 202, prepared by County Surveyor M.S. Smith, shows he found the original stake with the mound at the corner positron. Set an iron rod, 1-3/8" x 2.2'.

2011-A survey dated 09/13/2011 prepared by Perry L. Zieske, for project number N 1016 S, shows a 1/2" iron pipe in place for the corner position.

2017-On November 10th, Westwood Professional Services found a 1/2" iron pipe +/-3 ft. west of N/S centerline and online with fence running west. Monument fits distances on the 2011 Zieske Survey. Accepting the found 1/2" iron pipe as the position of the corner.

Analysis of the recovered data, field evidence and survey measurements, indicates that the monument found is the correct perpetuation of this corner. For additional information concerning this corner please contact Westwood Professional Services.

[Handwritten signature]
8/1/2011