

P5
W1/4
sec 21
104
41

COPY

Index P-9

CERTIFICATE OF LOCATION OF GOVERNMENT CORNER

EAST QUARTER Corner of Section 20, Township 104N, Range 41W

5th Principal Meridian, State of Minnesota, County of Nobles.

At the corner location shown on the sketch:

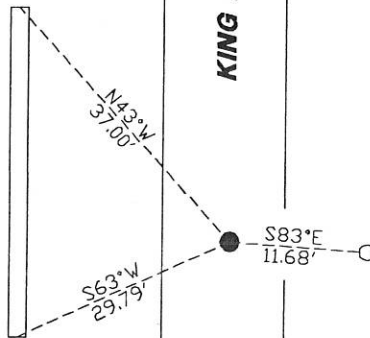
☒ On 11/10/2017 found a 1/2" OPEN IRON PIPE 7.5 FT WEST OF NORTH/SOUTH ROAD MATCHING
DATE
A FIELD LINE EAST.

☒ left monument as found ☐ lowered monument ☐ removed monument (explain)

☐ On _____ placed a _____
DATE

SKETCH OF REFERENCE TIES

SET PK IN N.
END OF CMP



SET PK IN S.
END OF CMP



N.T.S.

Statement of evidence for this corner location is on back of this page.

I hereby certify that this document was researched and prepared by me or under my direct supervision and that I am a licensed Land Surveyor under the laws of the State of Minnesota.

Signature L.M. Wilson

Date 1/29/18 License No. 49563

Title:

☒ Land Surveyor ☐ Professional Engineer
☐ County Surveyor ☐ County Engineer

DOCUMENT NUMBER A 357580
Certified, Filed and or Recorded on
March 07, 2018 3:45 PM

Lynn M. Wilson

NOBLES COUNTY RECORDER
LYNN M. WILSON
507-295-5268

Pages: 2

Statement of Evidence:

P-9

East Quarter Corner of Section 20, Township 104 North, Range 41 West, 5th Principal Meridian, Nobles County, Minnesota.

1868-Deputy Surveyor set a post in mound with pits.

1895 - Nobles County Highway Department "Corner Ties Book" notes an iron pin marking the corner location.

2011 - Nobles County Highway Department "Corner Ties Book" notes an iron pin marking the corner location.

2011 - Perry Zieske, LS 23008, survey shows a 1/2" iron pipe marking the corner location.

2017 - Westwood field crews recover a 1/2" iron pipe 7.5' east of centerline of north/south road and matching a field line east. The location matches the location given in the 2011 Zieske survey. Ties were found or set as shown on the front of this certificate.

Analysis of the recovered data, field evidence and survey measurements, indicates that the monument found is the correct perpetuation of this corner. For additional information concerning this corner please contact Westwood Professional Services.

Handwritten signature and date:
2/1/21