

# CERTIFICATE OF LOCATION OF GOVERNMENT CORNER

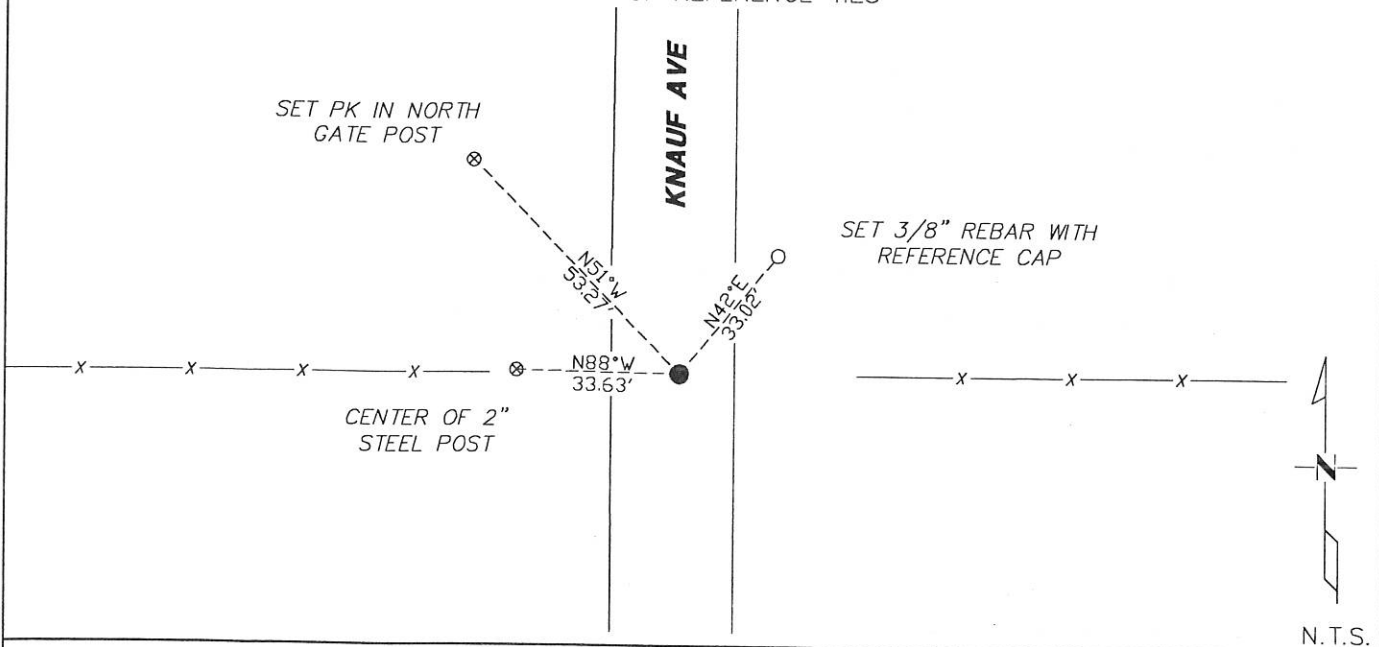
EAST QUARTER Corner of Section 28, Township 104N, Range 41W

5th Principal Meridian, State of Minnesota, County of Nobles.

At the corner location shown on the sketch:

- ☐ On \_\_\_\_\_ found \_\_\_\_\_  
DATE
- ☐ left monument as found ☐ lowered monument ☐ removed monument (explain)
- ☒ On 11/09/2017 placed a 5/8" REBAR CAPPED 49563 ON CENTERLINE AND FENCES EAST AND WEST  
DATE

## SKETCH OF REFERENCE TIES



Statement of evidence for this corner location is on back of this page.

I hereby certify that this document was researched and prepared by me or under my direct supervision and that I am a licensed Land Surveyor under the laws of the State of Minnesota.

Signature Lynn M. Wilson

Date 1/29/18 License No. 49563

Title:

- ☒ Land Surveyor ☐ Professional Engineer  
☐ County Surveyor ☐ County Engineer

**DOCUMENT NUMBER A 357590**

Certified, Filed and or Recorded on  
March 08, 2018 8:40 AM

Lynn M. Wilson

NOBLES COUNTY RECORDER  
LYNN M. WILSON  
507-295-5268

Pages: 2

**Statement of Evidence:**

T-13

East Quarter Corner of Section 28, Township 104 North, Range 41 West, 5<sup>th</sup> Principal Meridian, Nobles County, Minnesota.


1868-Deputy Surveyor Richard N. L. Jeorlt, set a post in mound with pits for the section corner.

1900-Nobles County Highway Department "Corner Ties Book" calls for a stone at the corner location.

1900-Surveyor's Record Book A-2, page 382, prepared by County Surveyor M.S. Smith shows a stone at the corner location.

2017-On November 9th, Westwood Professional Services searched at N/S centerline online with fence line running east and online with fence line running west; found nothing. Set a 5/8" rebar capped 49563 on N/S centerline and online with east and west fences. Ties were set as shown on the front of this certificate.

Analysis of the recovered data, field evidence and survey measurements, indicates that the monument found is the correct perpetuation of this corner. For additional information concerning this corner please contact Westwood Professional Services.

  
8/1/2017