

W/4
Sec 30
104
41

COPY

Index T-25

CERTIFICATE OF LOCATION OF GOVERNMENT CORNER

EAST QUARTER Corner of Section 25, Township 104N, Range 42W

5th Principal Meridian, State of Minnesota, County of Nobles.

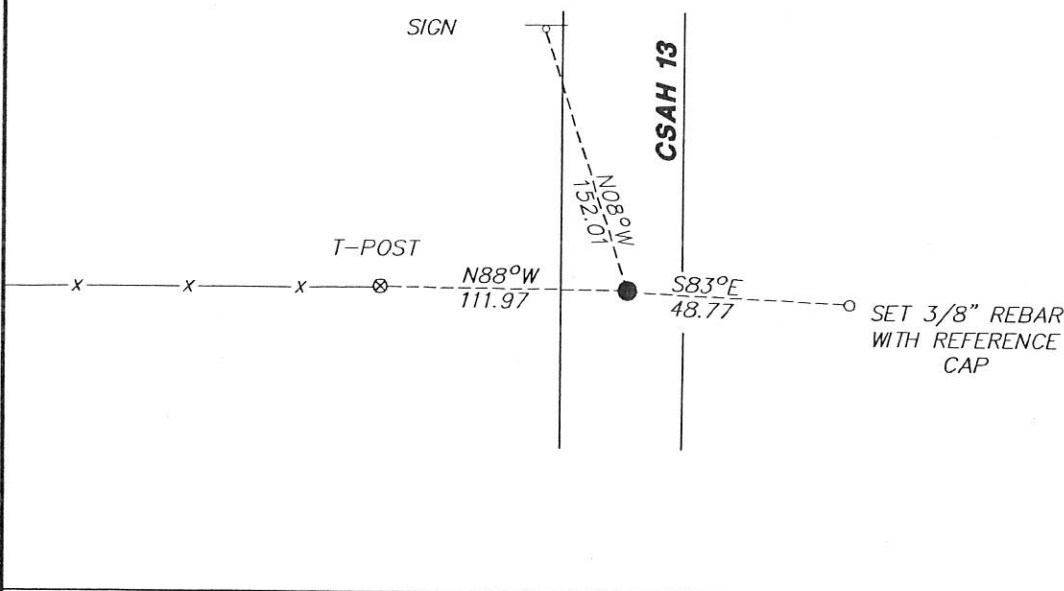
At the corner location shown on the sketch:

☒ On 11/09/2017 found a NOTHING.
DATE

☐ left monument as found ☐ lowered monument ☐ removed monument (explain)

☒ On 12/29/2017 placed a 5/8" REBAR CAPPED LS 49563 AT CENTERLINE AND FENCE RUNNING WEST.
DATE

SKETCH OF REFERENCE TIES



Statement of evidence for this corner location is on back of this page.

I hereby certify that this document was researched and prepared by me or under my direct supervision and that I am a licensed Land Surveyor under the laws of the State of Minnesota.

Signature L. Wilson

Date 2/7/18 License No. 49563

Title:

☒ Land Surveyor ☐ Professional Engineer
☐ County Surveyor ☐ County Engineer

DOCUMENT NUMBER A 357519
Certified, Filed and or Recorded on
March 07, 2018 8:30 AM

Lynn Wilson

NOBLES COUNTY RECORDER
LYNN M. WILSON
507-295-5268

Pages: 2

Statement of Evidence:

T-25

East Quarter Corner of Section 25, Township 104 North, Range 42 West, 5th Principal Meridian, Nobles County, Minnesota.

1868-Deputy Surveyor set a post in mound with pits

1950-Nobles County Highway Department "Corner Ties Book" calls for a stake as the corner position.

1951-C.S.A.H. No. 13 highway plans shows a 2 x 2 monument 17.0 ft. East of Station 79+50.2

1980-Nobles County Highway Department "Corner Ties Book" states "Could not find".

2017-On November 9th, Westwood Professional Services searched at N/S centerline and on line with a fence running west. A 5/8" rebar with LS 49563 cap was placed on centerline and fence west as the best available evidence of the corner location. Ties were found or set as shown on the front of this certificate.

Analysis of the recovered data, field evidence and survey measurements, indicates that the monument found is the correct perpetuation of this corner. For additional information concerning this corner please contact Westwood Professional Services.

[Handwritten signature]
2/1/12