

15
25
w/14
sec 31
104
41

6071

CERTIFICATE OF LOCATION OF GOVERNMENT CORNER

EAST QUARTER Corner of Section 36, Township 104N, Range 42W

5th Principal Meridian, State of Minnesota, County of Nobles.

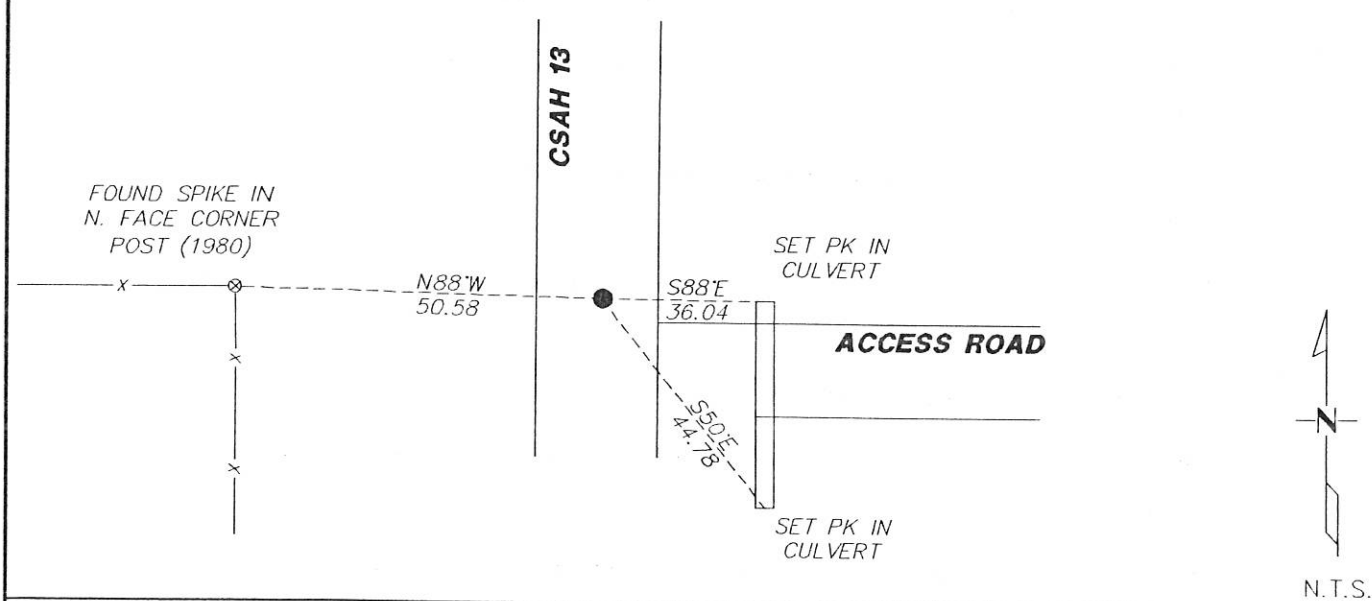
At the corner location shown on the sketch:

On 11/09/2017 found a 1/2" REBAR THAT LANDS ON CENTERLINE AND FENCE TO THE WEST
DATE

left monument as found lowered monument removed monument (explain)

On _____ placed a _____
DATE

SKETCH OF REFERENCE TIES



Statement of evidence for this corner location is on back of this page.

I hereby certify that this document was researched and prepared by me or under my direct supervision and that I am a licensed Land Surveyor under the laws of the State of Minnesota.

Signature Lynn M. Wilson

Date 2/7/18 License No. 49563

Title:

- Land Surveyor Professional Engineer
- County Surveyor County Engineer

DOCUMENT NUMBER A 357542
Certified, Filed and or Recorded on
March 07, 2018 10:22 AM (LW)

Lynn M. Wilson

NOBLES COUNTY RECORDER
LYNN M. WILSON
507-295-5266

Statement of Evidence:

X-25

East Quarter Corner of Section 36, Township 104 North, Range 42 West, 5th Principal Meridian, Nobles County, Minnesota.

1868-T.B. Walker set a post in mound with pits for the section corner

1900-On May 14th, 15th and 16th, survey completed by M.S. Smith, County Surveyor, in Surveyors Record Book A-2, Page 358, shows a stone at the corner location.

1911-On April 6th and 7th, survey completed by W.A. Saxton, County Surveyor, in Surveyors Record Book B, Page 11, shows "blue stone" at the corner position.

1923-Nobles County Highway Department "Corner Ties Book" calls for a stone as the corner position.

1944-Nobles County Highway Department "Corner Ties Book" calls for a stone as the corner position.

1951-Nobles County Highway Department "Corner Ties Book" calls for a stone as the corner position. Placed a wood stake.

1951-C.S.A.H. No. 13 highway plans shows a "I.P. w/ 2x2" at Station 26+47.3

1961-Nobles County Highway Department "Corner Ties Book" calls for stake as the corner position.

1980-Nobles County Highway Department "Corner Ties Book" calls for an iron pin as the corner position.

1993-Nobles County Highway Department "Corner Ties Book" calls for raising iron pin at the corner position.

1994-Nobles County Highway Department "Corner Ties Book" calls for a 1-3/4" PK nail being placed at the corner position after an overlay.

2017-On November 9th, Westwood Professional Services found a No. 4 rebar and 1 Nobles County Highway Department tie. The PK is on N/S centerline and online with a fence line to the west, and agrees with C.S.A.H. No. 13 stationing. Accepting the found No. 4 rebar as the corner. Ties were found or set as shown on the front of this certificate.