

W1/4 sec 35 104 41

COPY

Index X-17

CERTIFICATE OF LOCATION OF GOVERNMENT CORNER

EAST QUARTER Corner of Section 34, Township 104N, Range 41W

5th Principal Meridian, State of Minnesota, County of Nobles.

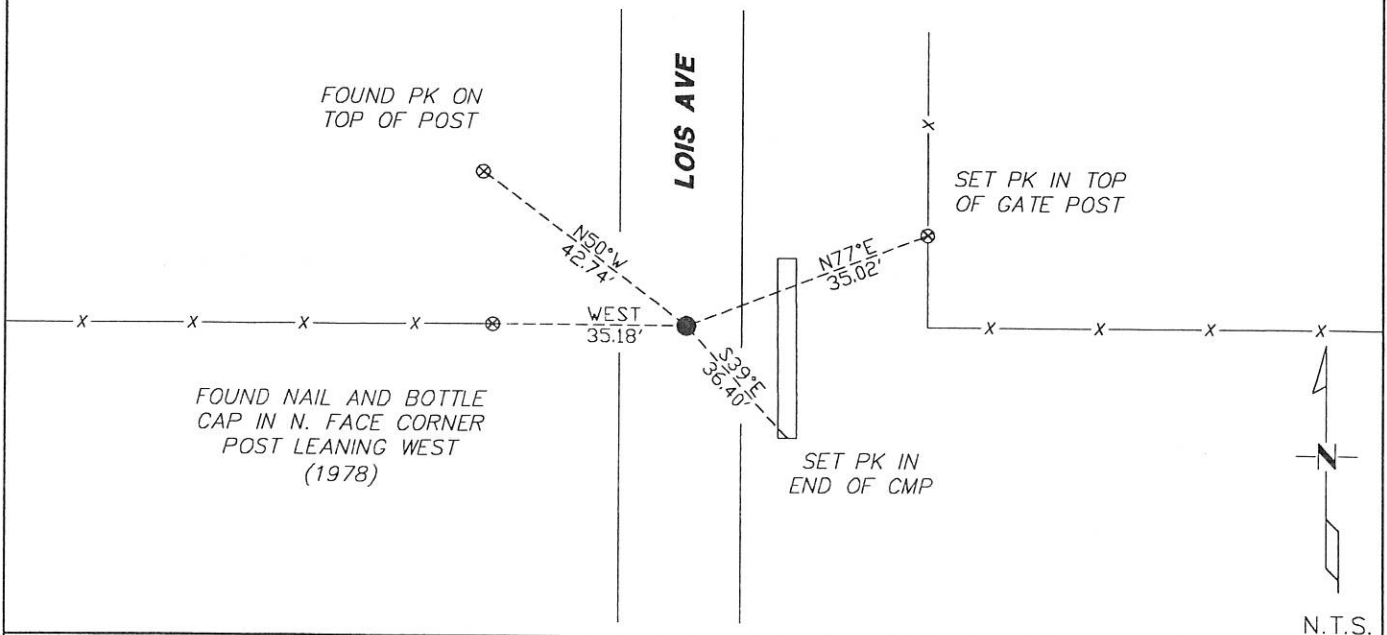
At the corner location shown on the sketch:

☒ On 11/08/2017 found a 1/2" REBAR ON NORTH/SOUTH CENTERLINE AND ON LINE WITH FENCE LINES
DATE 11/08/2017 RUNNING TO THE EAST AND WEST.

☒ left monument as found ☐ lowered monument ☐ removed monument (explain)

☐ On _____ placed a _____
DATE _____

SKETCH OF REFERENCE TIES



Statement of evidence for this corner location is on back of this page.

I hereby certify that this document was researched and prepared by me or under my direct supervision and that I am a licensed Land Surveyor under the laws of the State of Minnesota.

Signature L. M. Wilson

Date 1/29/18 License No. 49563

Title:

☒ Land Surveyor ☐ Professional Engineer
☐ County Surveyor ☐ County Engineer

DOCUMENT NUMBER A 357607
Certified, Filed and or Recorded on
March 08, 2018 10:03 AM

Lynn M. Wilson

NOBLES COUNTY RECORDER
LYNN M. WILSON
507-295-5268

Pages: 2

Statement of Evidence:

X-17

East Quarter Corner of Section 34, Township 104 North, Range 41 West, 5th Principal Meridian, Nobles County, Minnesota.

1868-Deputy Surveyor Richard N. L. Jeorlt, set a post in mound with pits for the section corner.

Date Unknown-Surveyor's Record Book B, page 185, prepared by County Surveyor G.D McMortry shows a stone at the corner location.

1937-Nobles County Highway Department "Corner Ties Book" calls for a stone at the corner location.

1978-Nobles County Highway Department "Corner Ties Book" states "FOUND NOTHING IN 1978 (ASSUMED & PLACED IRON PIN)

Ties:

N&D IN COR FE POST W. 34.86'

N&D IN COR FE POST E. 33.95'

2017-On November 8th, Westwood Professional Services found a ½" rebar on N/S centerline and online with fence lines to running to the east and west. Found 1 Nobles County Highway Department tie, N&D IN COR FE POST W. 34.86', which fit within reason (post was leaning west). Accepting the found rebar as the best available evidence of the corner position. Set 3 ties.

Analysis of the recovered data, field evidence and survey measurements, indicates that the monument found is the correct perpetuation of this corner. For additional information concerning this corner please contact Westwood Professional Services.