

W 1/4 sec 6 104 41

# CERTIFICATE OF LOCATION OF GOVERNMENT CORNER

EAST QUARTER Corner of Section 1, Township 104N, Range 42W

5th Principal Meridian, State of Minnesota, County of Nobles.

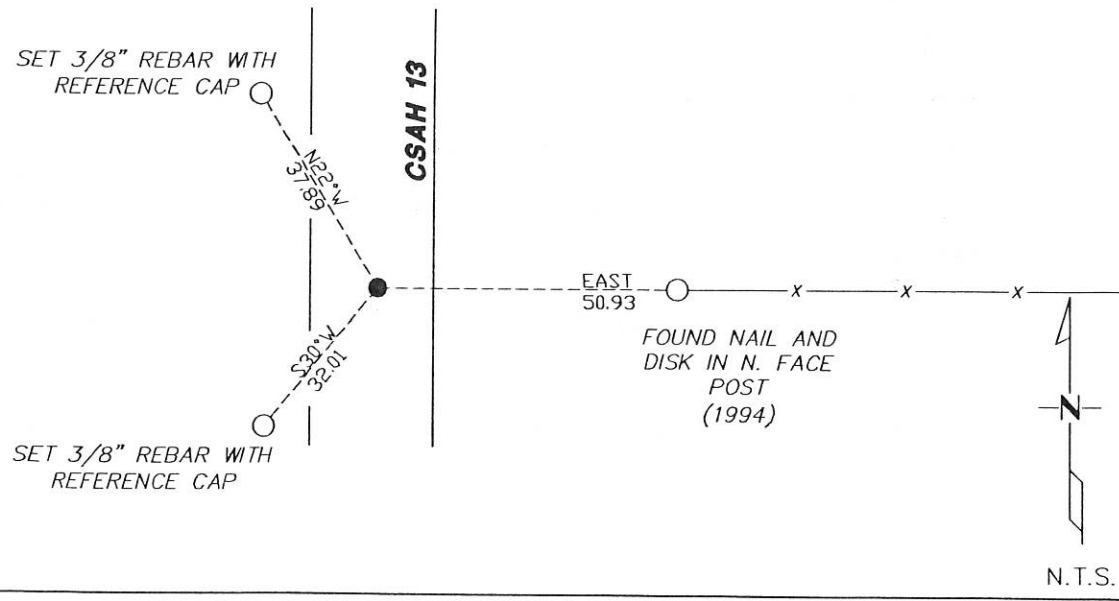
At the corner location shown on the sketch:

On 12/06/2017 found a PK NAIL AND A TIE FROM 1994 TO THE CORNER FENCE POST.  
DATE

left monument as found       lowered monument       removed monument (explain)

On \_\_\_\_\_ placed a \_\_\_\_\_  
DATE

### SKETCH OF REFERENCE TIES



Statement of evidence for this corner location is on back of this page.

I hereby certify that this document was researched and prepared by me or under my direct supervision and that I am a licensed Land Surveyor under the laws of the State of Minnesota.

Signature *FWL*

Date 2/7/18 License No. 49563

Title:

- Land Surveyor       Professional Engineer
- County Surveyor       County Engineer

DOCUMENT NUMBER A **357474**  
Certified, Filed and or Recorded on  
March 06 2018 10:30 AM

*Lynn M. Wilson*

NOBLES COUNTY RECORDER  
LYNN M. WILSON  
507 295-5268

Statement of Evidence:

C-25

East Quarter Corner of Section 1, Township 104 North, Range 42 West, 5<sup>th</sup> Principal Meridian, Nobles County, Minnesota.

1868-Deputy Surveyor set a post in mound with pits.

1894 - Nobles County Highway Department "Corner Ties Book" notes a stone set marking the corner location.

1923 - Nobles County Highway Department "Corner Ties Book" notes a stone marking the corner location.

1950 - Nobles County Highway Department "Corner Ties Book" notes a stone marking the corner location.

1951 - CSAH 13 highway plans show a station of 291+43 at this location. A distance of 2647.20 (per stationing) is given to the SE 1. No distance is given north to the NE 1.

1960 - Nobles County Highway Department "Corner Ties Book" notes stone marking the corner and a wood stake placed.

1980 - Nobles County Highway Department "Corner Ties Book" notes an iron pin marking the corner location.

1994 - Nobles County Highway Department "Corner Ties Book" notes a 1 3/4" PK nail set after an overlay. The following ties were made:

N/D in fence post	West	51.96'
N/D in power pole	NW	69.00'
N/D in corner fence post	East	50.93'

2017 - Westwood field crews recover a PK nail in the pavement and tie to the corner fence post from 1994. The pavement was not dug up due to the 1994 tie and monument. Measurements also fit within reason to 1951 CSAH13 highway plans. Ties were set or found as shown on the front of this certificate.

*[Handwritten signature]*  
8/10/17