

CERTIFICATE OF LOCATION OF GOVERNMENT CORNER

EAST QUARTER Corner of Section 12, Township 104N, Range 42W

5th Principal Meridian, State of Minnesota, County of Nobles.

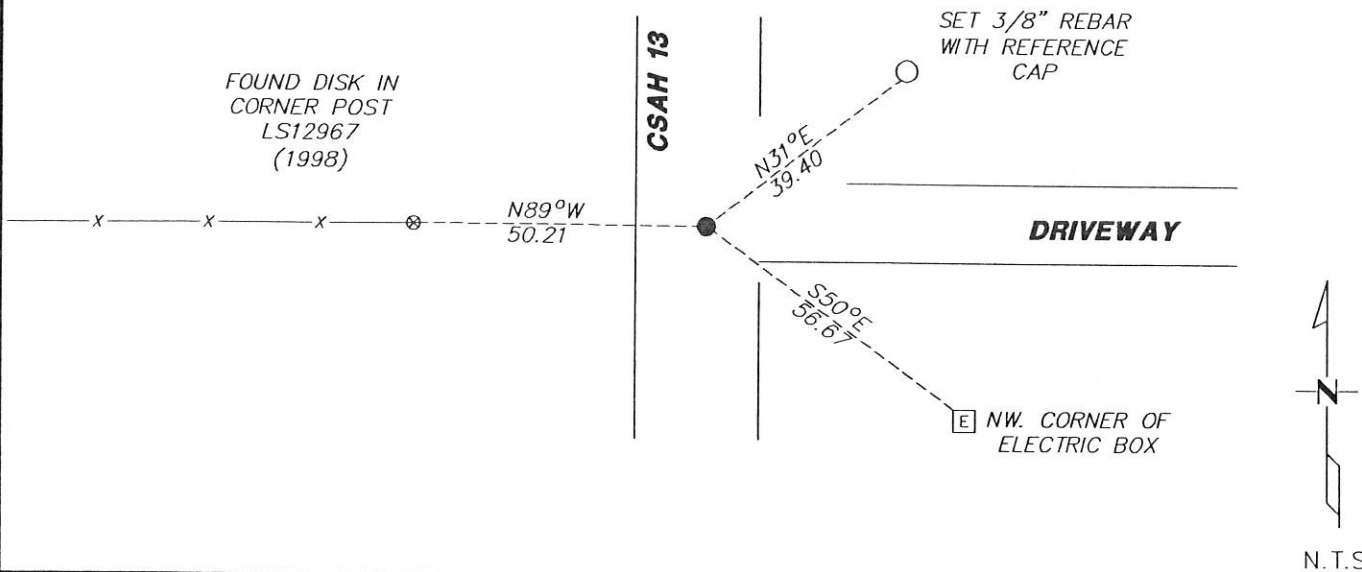
At the corner location shown on the sketch:

☒ On 12/06/2017 found a 5/8" REBAR DOWN 0.4" ON CENTERLINE AND A FENCE WEST.
DATE

☐ left monument as found ☐ lowered monument ☐ removed monument (explain)

☐ On DATE placed a

SKETCH OF REFERENCE TIES



Statement of evidence for this corner location is on back of this page.

I hereby certify that this document was researched and prepared by me or under my direct supervision and that I am a licensed Land Surveyor under the laws of the State of Minnesota.

Signature Lynn M. Wilson

Date 2/7/18 License No. 49563

Title:

☒ Land Surveyor ☐ Professional Engineer
☐ County Surveyor ☐ County Engineer

DOCUMENT NUMBER A 357485
Certified, Filed and/or Recorded on
March 05, 2018 11:25 AM

Lynn M. Wilson

NOBLES COUNTY RECORDER
LYNN M. WILSON
507-295-5288

Pages: 2

Statement of Evidence:

G-25

East Quarter Corner of Section 12, Township 104 North, Range 42 West, 5th Principal Meridian, Nobles County, Minnesota.

1868-Deputy Surveyor set a post in mound with pits

1950- Nobles County Highway Department "Corner Ties Book" calls for a stake marking the corner location.

1951 - CSAH13 highway plans show a station of 238+41.9. Measurements per stationing are 2647.40 to the SE 12 and 2653.9 to the NE 12.

1960 - Nobles County Highway Department "Corner Ties Book" notes a stake marking the corner location.

1980 - Nobles County Highway Department "Corner Ties Book" notes an iron pin marking the corner location.

1993 - Nobles County Highway Department "Corner Ties Book" notes the iron pin raised.

1994 - Nobles County Highway Department "Corner Ties Book" notes a 1 3/4" PK nail placed after overlay. The following ties were made:

1998 - Nobles County Highway Department "Corner Ties Book" notes corner ties made by Madsen Land Surveying. Ties are as follows:

Disc in power pole	SE	59.31'
Disc in corner post	West	50.21'
Disc in brace post	WNW	49.91

2017 - Westwood field crews recover a 5/8" rebar down 0.4' on centerline and one reference tie from 1998. Ties were found or set as shown on the front of this certificate.

Analysis of the recovered data, field evidence and survey measurements, indicates that the monument found is the correct perpetuation of this corner. For additional information concerning this corner please contact Westwood Professional Services.

2/1/15