

W/4
Sec 8
104 41

COPY

Index G-5

CERTIFICATE OF LOCATION OF GOVERNMENT CORNER

EAST QUARTER Corner of Section 7, Township 104N, Range 41W

5th Principal Meridian, State of Minnesota, County of Nobles.

At the corner location shown on the sketch:

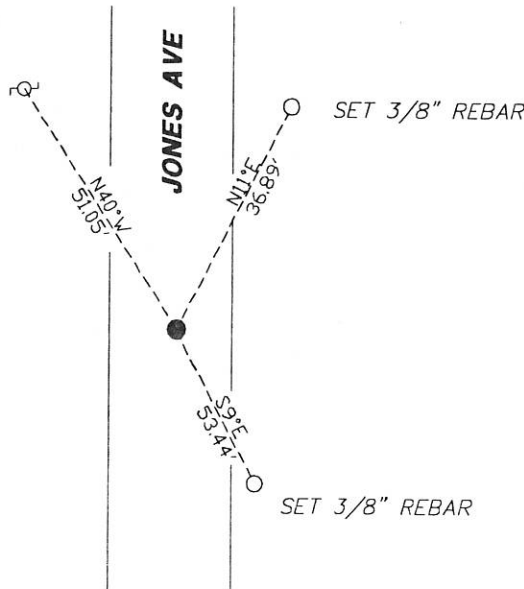
On 11/28/2017 found a REBAR WITH LS CAP 12967
DATE

left monument as found lowered monument removed monument (explain)

On _____ placed a _____
DATE

SKETCH OF REFERENCE TIES

FOUND NAIL AND DISC LS
12967 IN NE FACE OF PP



N.T.S.

Statement of evidence for this corner location is on back of this page.

I hereby certify that this document was researched and prepared by me or under my direct supervision and that I am a licensed Land Surveyor under the laws of the State of Minnesota.

Signature L.M. Wilson

Date 1/29/18 License No. 49563

Title:

- Land Surveyor Professional Engineer
- County Surveyor County Engineer

DOCUMENT NUMBER A 357554
Certified, Filed and or Recorded on
March 07, 2018 1:35 PM

Lynn Wilson

NOBLES COUNTY RECORDER
LYNN M. WILSON
507-295-5268

Pages: 2

KRIS WROOLIE
Minnesota License No. 49563

Statement of Evidence:

G-5

East Quarter Corner of Section 7, Township 104 North, Range 41 West, 5th Principal Meridian, Nobles County, Minnesota.

1868-Deputy Surveyor set a post in mound with pits.

1896 - Nobles County Highway Department "Corner Ties Book" notes a stake marking the corner location.

2017-On November 28th, Westwood Professional Services recovered a rebar with LS 12697 cap down 0.3'. Also recovered one tie with LS 12697 cap. This location fits centerline, occupation, and lost location. Ties were found or set as shown on the front of this certificate.

Analysis of the recovered data, field evidence and survey measurements, indicates that the monument found is the correct perpetuation of this corner. For additional information concerning this corner please contact Westwood Professional Services.

[Handwritten signature]
8/19/11