

CERTIFICATE OF LOCATION OF GOVERNMENT CORNER

NORTHEAST Corner of Section 1, Township 104N, Range 42W

5th Principal Meridian, State of Minnesota, County of Nobles.

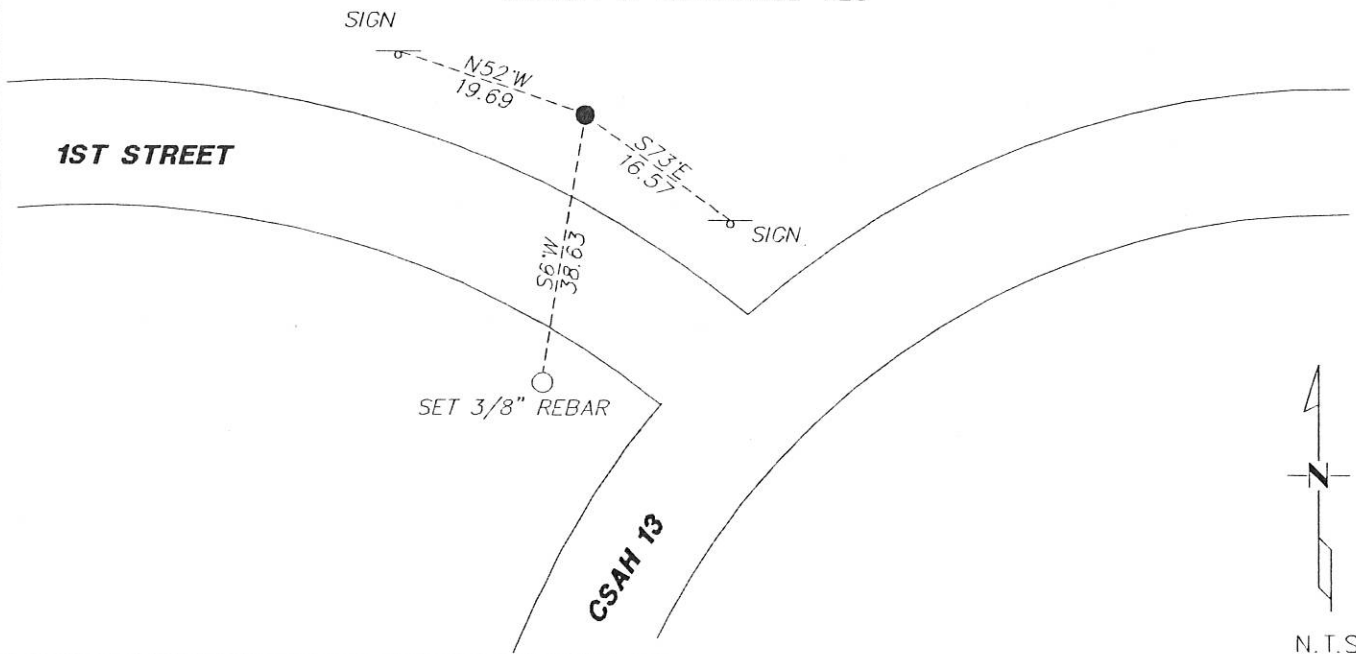
At the corner location shown on the sketch:

On 11/28/2017 found a 1/2" REBAR AT THE PROJECTED CENTERLINE OF ROADS
DATE EAST/WEST/SOUTH

left monument as found lowered monument removed monument (explain)

On _____ placed a _____
DATE

SKETCH OF REFERENCE TIES



Statement of evidence for this corner location is on back of this page.

I hereby certify that this document was researched and prepared by me or under my direct supervision and that I am a licensed Land Surveyor under the laws of the State of Minnesota.

Signature [Handwritten Signature]

Date 2/7/18 License No. 49563

Title:

- Land Surveyor Professional Engineer
- County Surveyor County Engineer

DOCUMENT NUMBER **A 357475**

Certified, Filed and or Recorded on
March 06, 2018 10 35 AM

[Handwritten Signature]

NOBLES COUNTY RECORDER
LYNN M. WILSON
507 295-5258

Statement of Evidence:

A-25

Northeast Corner of Section 1, Township 104 North, Range 42 West, 5th Principal Meridian, Nobles County, Minnesota.

1868-Deputy Surveyor set a post in mound with pits.

1894 - Nobles County Highway Department "Corner Ties Book" notes a stone marking the corner location.

1916 - Nobles County Highway Department "Corner Ties Book" notes a stone marking the corner location.

1923 - Nobles County Highway Department "Corner Ties Book" notes a stone marking the corner location.

1950 - Nobles County Highway Department "Corner Ties Book" notes stone marking the corner location.

1951 - CSAH 13 highway plans note a stone marking the location of the corner, but no stationing is given.

1960 - Nobles County Highway Department "Corner Ties Book" notes a stone marking the corner location and a wood stake placed.

1980 - Nobles County Highway Department "Corner Ties Book" notes an iron pin marking the corner location. The following ties were made:

Hub	NE	38.70'
Hub	NW	37.65'
Bottom bolt on sign post	East	32.50'

2017 - Westwood field crews recover a #4 rebar at the PI of roads east/west/south. Measurements to adjacent section corners fit record within reason. Ties were found or set as shown on the front of this certificate.

Analysis of the recovered data, field evidence and survey measurements, indicates that the monument found is the correct perpetuation of this corner. For additional information concerning this corner please contact Westwood Professional Services.

8/1/15