

CERTIFICATE OF LOCATION OF GOVERNMENT CORNER

NORTHEAST CLOSING CORNER _____ Corner of Section 4, Township 104N, Range 42W

5th Principal Meridian, State of Minnesota, County of Nobles.

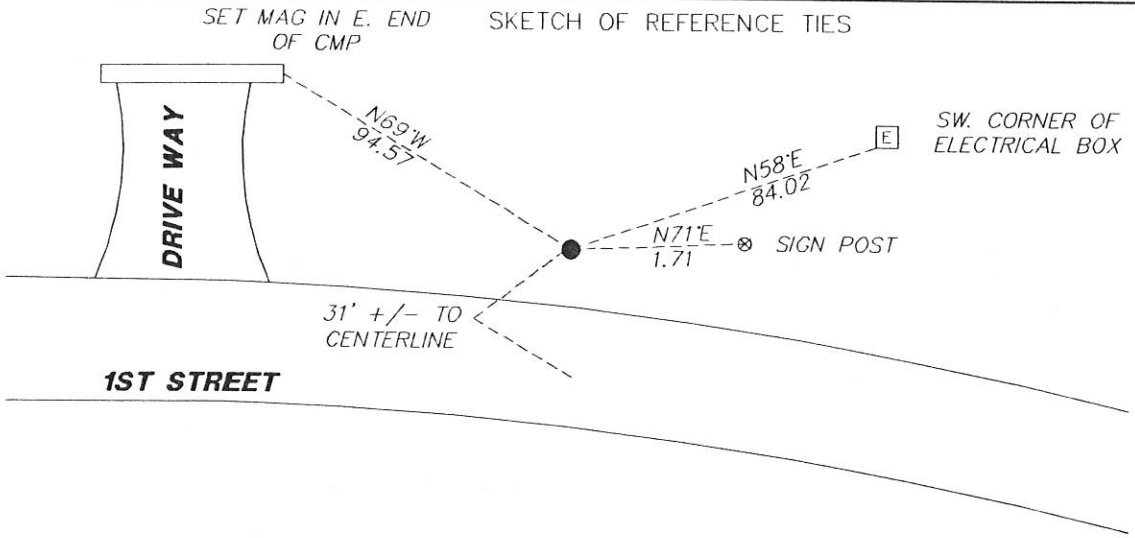
At the corner location shown on the sketch:

On 11/28/2017 found a 800 SPIKE OVER A CUT STONE.
DATE

left monument as found lowered monument removed monument (explain)

On _____ placed a _____
DATE

SKETCH OF REFERENCE TIES



N.T.S.

Statement of evidence for this corner

I hereby certify that this document was researched and prepared by me or under my direct supervision and that I am a licensed Land Surveyor under the laws of the State of Minnesota.

Signature [Handwritten Signature]

Date 2/7/18 License No. 49563

Title:

- Land Surveyor Professional Engineer
- County Surveyor County Engineer

DOCUMENT NUMBER A 357477
Certified, Filed and/or Recorded on
March 06 2018 10:45 AM

[Handwritten Signature: Lynn Wilson]

NOBLES COUNTY RECORDER
LYNN M. WILSON
507-295-5268

Pages: 2

Statement of Evidence:

A-13

Northeast Closing Corner of Section 4, Township 104 North, Range 42 West, 5th Principal Meridian,
Nobles County, Minnesota.

1868-Deputy Surveyor set a post in a mound with pits for the corner.

1915 - Nobles County Highway Department "Corner Ties Book" calls for a stone set to mark the corner location

1924 - Nobles County Highway Department "Corner Ties Book" calls for a stone to mark the corner location

1938 - Nobles County Highway Department "Corner Ties Book" calls for a stone to mark the corner location

1951 - Nobles County Highway Department "Corner Ties Book" calls for a stone to mark the corner location

1962 - Nobles County Highway Department "Corner Ties Book" calls for a stake to mark the corner location

1980 - Nobles County Highway Department "Corner Ties Book" calls for a stake and a placed iron pin to mark the corner location

2017- Westwood Professional Services recovered an 80d spike over a cut stone. Ties were found or set as shown on the front of this certificate

Analysis of the recovered data, field evidence and survey measurements, indicates that the monument found is the correct perpetuation of this corner. For additional information concerning this corner please contact Westwood Professional Services.

[Handwritten signature]
3/1/18