

RS  
5/14  
Sec 11  
104  
42

# CERTIFICATE OF LOCATION OF GOVERNMENT CORNER

NORTH QUARTER Corner of Section 14, Township 104N, Range 42W

5th Principal Meridian, State of Minnesota, County of Nobles.

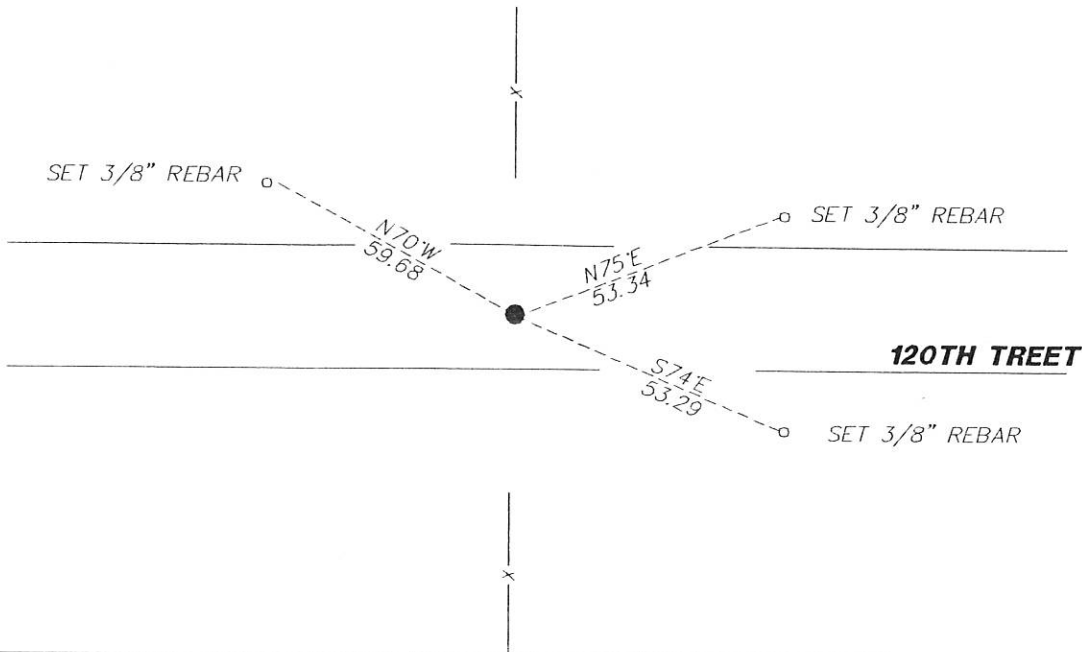
At the corner location shown on the sketch:

On 12/27/2017 found a BENT REBAR.  
DATE

left monument as found       lowered monument       removed monument (explain)

On 12/27/2017 placed a REBAR CAPPED RLS 49563 0.6' DOWN TO REPLACE BENT REBAR.  
DATE

SKETCH OF REFERENCE TIES



Statement of evidence for this corner location is on back of this page.

I hereby certify that this document was researched and prepared by me or under my direct supervision and that I am a licensed Land Surveyor under the laws of the State of Minnesota.

Signature *K. Wilson*

Date 2/7/18 License No. 49563

Title:

- Land Surveyor       Professional Engineer
- County Surveyor       County Engineer

DOCUMENT NUMBER A 357490  
Certified, Filed and/or Recorded on  
March 05, 2018 11:50 AM

*Lynn M. Wilson*

NOBLES COUNTY RECORDER  
LYNN M. WILSON  
507-295-5266

**Statement of Evidence:**

J-19

North Quarter Corner of Section 14, Township 104 North, Range 42 West, 5<sup>th</sup> Principal Meridian, Nobles County, Minnesota.

1868-Deputy Surveyor set a post in mound with pits

1991- Nobles County Highway Department "Corner Ties Book" calls for a stake to mark the corner location.

2006 - Ulteig Engineering found a bent rebar and replaced it with a 5/8" rebar with cap 44563. They set ties and filed a Certificate of Location doc. no. 311310

2017- Westwood Professional Services recovered a bent rebar (positioned at the base). The monument agrees with the 2006 ties to adjacent section corners. A 5/8" rebar capped 49563 was set in place of the found bent rebar. Ties were found or set as shown on the front of this certificate.

Analysis of the recovered data, field evidence and survey measurements, indicates that the monument found is the correct perpetuation of this corner. For additional information concerning this corner please contact Westwood Professional Services.

*[Handwritten signature]*  
8/1/18