

# CERTIFICATE OF LOCATION OF GOVERNMENT CORNER

NORTH QUARTER Corner of Section 23, Township 104N, Range 42W

5th Principal Meridian, State of Minnesota, County of Nobles.

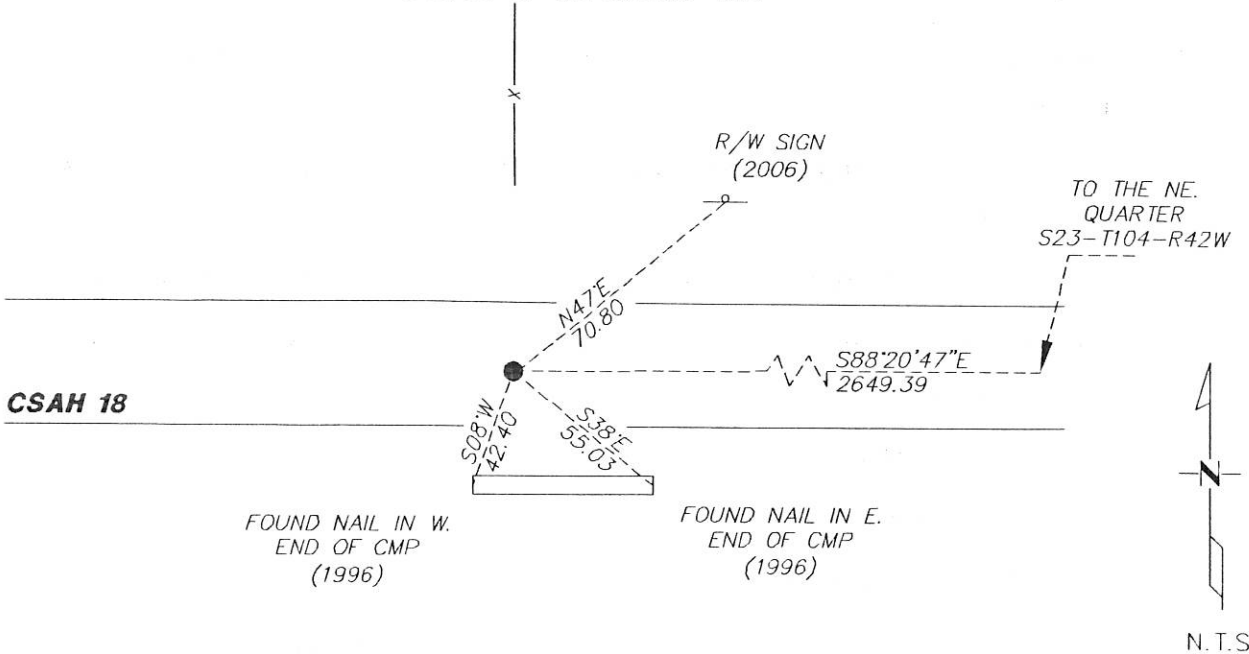
At the corner location shown on the sketch:

On 11/29/2017 found a PK NAIL FLUSH WITH THE PAVEMENT THAT AGREES WITH HIGHWAY  
DATE STATIONING FROM 1996 AND 2006.

left monument as found       lowered monument       removed monument (explain)

On \_\_\_\_\_ placed a \_\_\_\_\_  
DATE

### SKETCH OF REFERENCE TIES



**CSAH 18**

Statement of evidence for this corner location is on back of this page.

I hereby certify that this document was researched and prepared by me or under my direct supervision and that I am a licensed Land Surveyor under the laws of the State of Minnesota.

Signature Lynn M. Wilson

Date 2/7/18 License No. 49563

Title:

- Land Surveyor       Professional Engineer
- County Surveyor       County Engineer

DOCUMENT NUMBER A 957513  
Certified, Filed and or Recorded on  
March 07, 2018 8:00 AM

*Lynn M. Wilson*

NOBLES COUNTY RECORDER  
LYNN M. WILSON  
507-295-5268

Pages: 2

**Statement of Evidence:**

N-19

North Quarter Corner of Section 23, Township 104 North, Range 42 West, 5<sup>th</sup> Principal Meridian, Nobles County, Minnesota.

1868-Deputy Surveyor set a post in mound with pits

1901- Nobles County Highway Department "Corner Ties Book" calls for a stone set to mark the corner location.

1936 - Nobles County Highway Department "Corner Ties Book" calls for a stone to mark the corner location.

1962 - Nobles County Highway Department "Corner Ties Book" states a wood stake was placed for the corner

1970 - Nobles County Highway Department "Corner Ties Book" states an iron pipe was in place for the corner

1991 - Nobles County Highway Department "Corner Ties Book" states that the corner was found.

1996 - Nobles County Highway Department "Corner Ties Book" states a 3/8" X 3" rebar was placed for the corner and three ties given:

Nail in fe ent pipe	S.W.	42.40'
Nail in fe ent pipe	S.E.	55.03'
Top bolt R/W sign	N.E.	70.75'

2006 - Ulteig Engineering Inc. found a 5/8" rebar, set 2 ties, and filed a Certificate of Location Doc. No. 311315

2017 - The county hwy dept set a pk nail after new paving

2017- Westwood Professional Services recovered a pk nail in the new pavement that agrees with highway stationing, ties from 1996 and 2006, and with adjacent section corners from the 2006 Certificate of Location. Ties were found or set as shown on the front of this certificate.

*[Handwritten signature]*  
5/15/18