

425

S1/4
SEC 15
104
42

COPY

Index N-15

CERTIFICATE OF LOCATION OF GOVERNMENT CORNER

NORTH QUARTER _____ Corner of Section 22, Township 104N, Range 42W

5th Principal Meridian, State of Minnesota, County of Nobles.

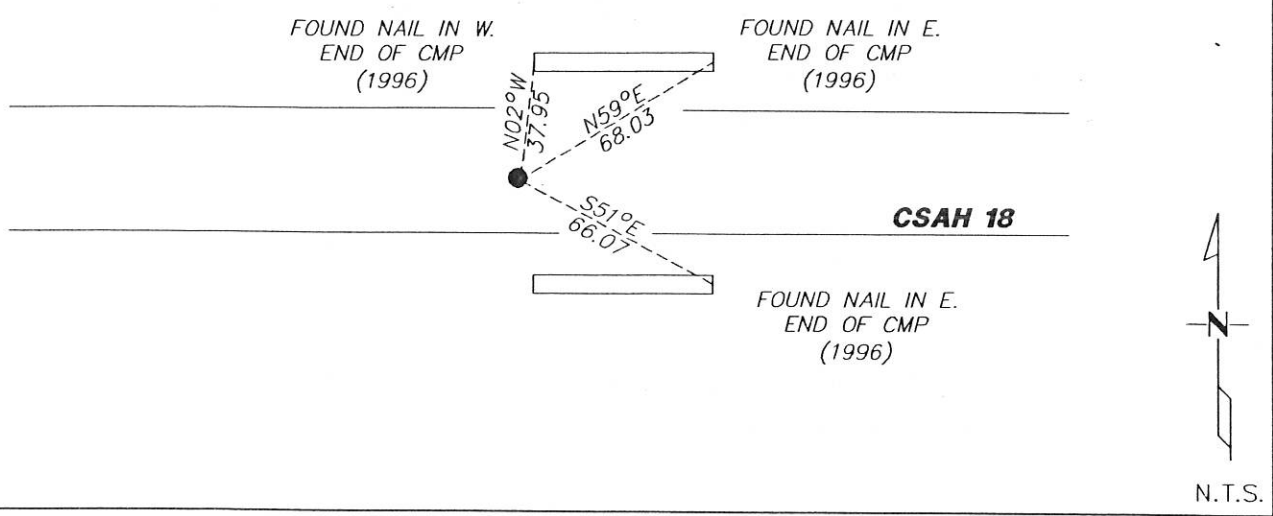
At the corner location shown on the sketch:

On 11/29/2017 found a PK NAIL WITH THE PAVEMENT THAT AGREES WIT HIGHWAY STATIONING.
DATE

left monument as found lowered monument removed monument (explain)

On _____ placed a _____
DATE

SKETCH OF REFERENCE TIES



Statement of evidence for this corner location is on back of this page.

I hereby certify that this document was researched and prepared by me or under my direct supervision and that I am a licensed Land Surveyor under the laws of the State of Minnesota.

Signature Lynn M. Wilson

Date 2/7/18 License No. 49563

Title:

- Land Surveyor Professional Engineer
- County Surveyor County Engineer

DOCUMENT NUMBER A 357511
Certified, Filed and or Recorded on
March 06, 2018 3:09 PM

Lynn M. Wilson

NOBLES COUNTY RECORDER
LYNN M. WILSON
507-295-5268

Pages: 2

Statement of Evidence:

N-15

North Quarter Corner of Section 22, Township 104 North, Range 42 West, 5th Principal Meridian, Nobles County, Minnesota.

1868-Deputy Surveyor set a post in mound with pits

1936- Nobles County Highway Department "Corner Ties Book" calls for a stake to mark the corner location.

1962- Nobles County Highway Department "Corner Ties Book" calls for an iron pin set to mark the corner location.

1970 - Nobles County Highway Department "Corner Ties Book" calls for a 1" iron pipe to mark the corner location.

1991 - Nobles County Highway Department "Corner Ties Book" states that the corner was found.

1996 - Nobles County Highway Department "Corner Ties Book" states a 3/8" X 3" rebar was placed for the corner and three ties given:

Nail in fe ent pipe	S.E	66.30'
Nail in fe ent pipe	N.E.	68.45'
Nail in fe ent pipe	N.W.	38.20'

2017- Westwood Professional Services recovered a 5/8" rebar on centerline that agrees with highway stationing and ties from 1996. Ties were found or set as shown on the front of this certificate.

Analysis of the recovered data, field evidence and survey measurements, indicates that the monument found is the correct perpetuation of this corner. For additional information concerning this corner please contact Westwood Professional Services.

[Handwritten signature]
5/15/18