

25 12
S1/4
sec 16 104 42

COPY

Index N-11

CERTIFICATE OF LOCATION OF GOVERNMENT CORNER

NORTH QUARTER Corner of Section 21, Township 104N, Range 42W

5th Principal Meridian, State of Minnesota, County of Nobles.

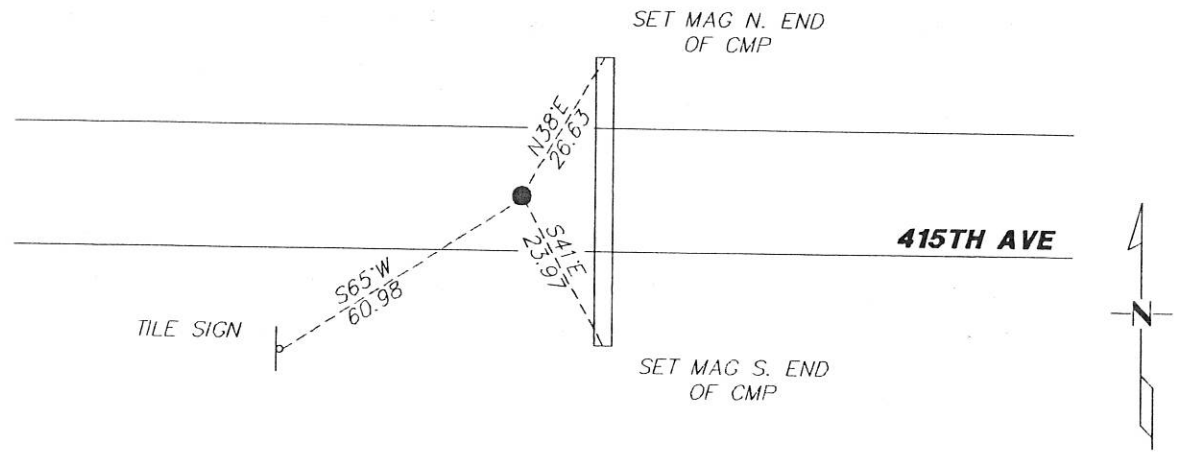
At the corner location shown on the sketch:

On 11/29/2017 found NOTHING.
DATE

left monument as found lowered monument removed monument (explain)

On 12/27/2017 placed a 5/8" REBAR CAPPED LS 49563 DOWN 0.4' ON CENTERLINE AND
DATE EQUIDISTANT BETWEEN SECTION CORNERS.

SKETCH OF REFERENCE TIES



N.T.S.

Statement of evidence for this corner location is on back of this page.

I hereby certify that this document was researched and prepared by me or under my direct supervision and that I am a licensed Land Surveyor under the laws of the State of Minnesota.

Signature L.M. Wilson

Date 2/7/18 License No. 49563

Title:

- Land Surveyor Professional Engineer
- County Surveyor County Engineer

DOCUMENT NUMBER A 357500
Certified, Filed and or Recorded on
March 06, 2018 3:07 PM

Lynn M. Wilson

NOBLES COUNTY RECORDER
LYNN M. WILSON
507-295-5268

Pages: 2

KRIS WROOLIE
Minnesota License No. 49563

Statement of Evidence:

N-11

North Quarter Corner of Section 21, Township 104 North, Range 42 West, 5th Principal Meridian, Nobles County, Minnesota.

1868-Deputy Surveyor set a post in mound with pits

1894- Nobles County Highway Department "Corner Ties Book" calls for a stake to mark the corner location.

2017- Westwood Professional Services located centerline. No additional evidence was recovered for the corner. A 5/8" rebar capped LS 49563 was placed midway between section corners and on centerline to mark the quarter corner. Ties were set as shown on the front of this certificate.

Analysis of the recovered data, field evidence and survey measurements, indicates that the monument found is the correct perpetuation of this corner. For additional information concerning this corner please contact Westwood Professional Services.

Kris Wroolie
5/11/12