

5/4
Sec 18
104
42

COPY

Index N-3

CERTIFICATE OF LOCATION OF GOVERNMENT CORNER

NORTH QUARTER _____ Corner of Section 19, Township 104N, Range 42W

5th Principal Meridian, State of Minnesota, County of Nobles.

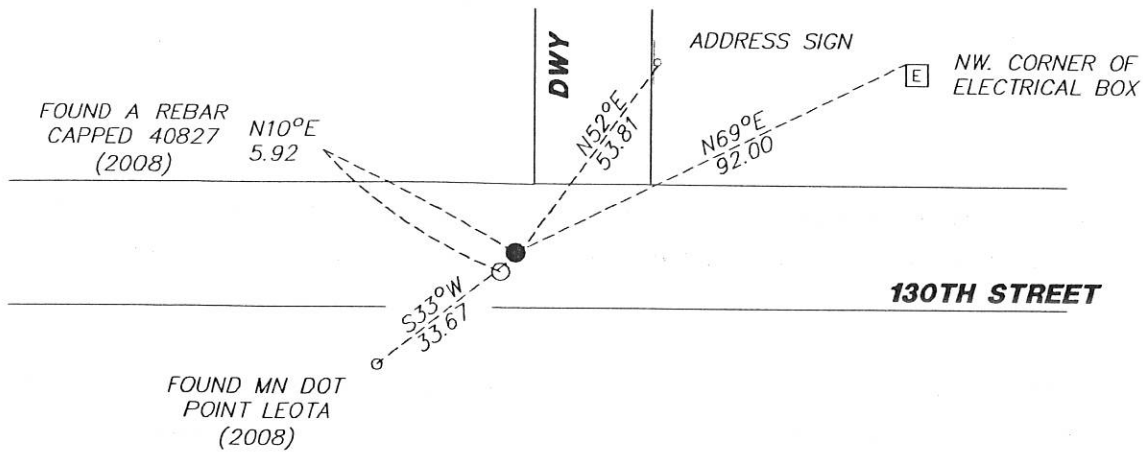
At the corner location shown on the sketch:

On 11/29/2017 found a SURVEY SPIKE ABOVE A STONE FROM 2012 ZIESKE SURVEY.
DATE

left monument as found lowered monument removed monument (explain)

On _____ placed a _____
DATE

SKETCH OF REFERENCE TIES



N.T.S.

Statement of evidence for this corner location is on back of this page.

I hereby certify that this document was researched and prepared by me or under my direct supervision and that I am a licensed Land Surveyor under the laws of the State of Minnesota.

Signature Lynn M. Wilson

Date 2/7/18 License No. 49563

Title:

- Land Surveyor Professional Engineer
- County Surveyor County Engineer

DOCUMENT NUMBER A 357506

Certified, Filed and or Recorded on

March 06, 2018 3:04 PM

Lynn M. Wilson

NOBLES COUNTY RECORDER
LYNN M. WILSON
507-295-5268

Pages: 2

KRIS WROOLIE
Minnesota License No. 49563

Statement of Evidence:

N-3

North Quarter Corner of Section 19, Township 104 North, Range 42 West, 5th Principal Meridian, Nobles County, Minnesota.

1868-Deputy Surveyor set a post in mound with pits

1932- Nobles County Highway Department "Corner Ties Book" calls for a stake to mark the corner location.

2008 - Ulteig Engineering placed a rebar capped LS 40827 on line between section corners and on line with a fence line to the north. They set ties and filed a Certificate of Location doc. no. 318102

2012 - Perry Zieske excavated with a backhoe and recovered and accepted a stone. He placed a survey spike over the top of the stone and file a Certificate of Location doc. no. 337684

2017- Westwood Professional Services recovered a rebar capped 40827 and a survey spike and one tie from the 2008 Certificate of Location. Accepting the 2012 Zieske monument as the corner. Ties were found or set as shown on the front of this certificate.

Analysis of the recovered data, field evidence and survey measurements, indicates that the monument found is the correct perpetuation of this corner. For additional information concerning this corner please contact Westwood Professional Services.

Kris Wroolie
3/1/15