

S/A
sec 19
104 42

CERTIFICATE OF LOCATION OF GOVERNMENT CORNER

NORTH QUARTER Corner of Section 30, Township 104N, Range 42W

5th Principal Meridian, State of Minnesota, County of Nobles.

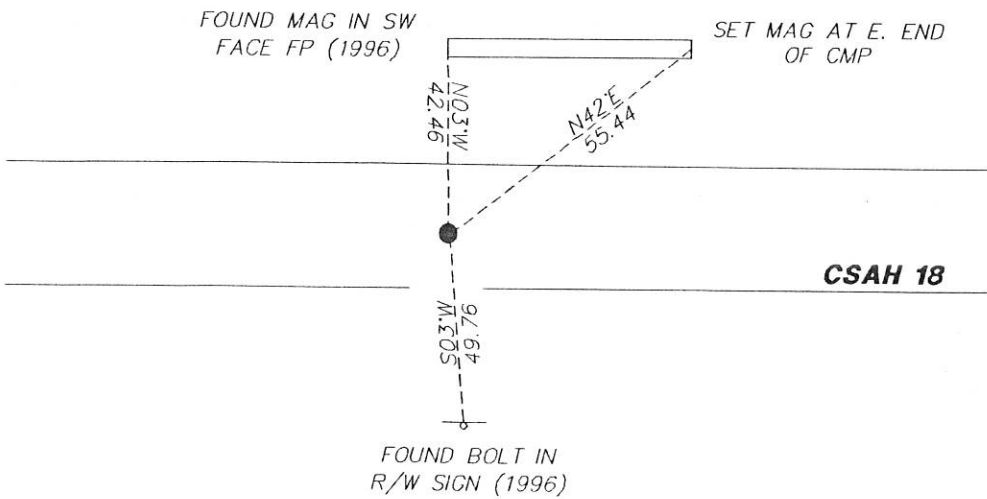
At the corner location shown on the sketch:

On 11/29/2017 found a PK NAIL AND TWO TIES FROM 1996.
DATE

left monument as found lowered monument removed monument (explain)

On _____ placed a _____
DATE

SKETCH OF REFERENCE TIES



Statement of evidence for this corner location is on back of this page.

I hereby certify that this document was researched and prepared by me or under my direct supervision and that I am a licensed Land Surveyor under the laws of the State of Minnesota.

Signature L.M. Wilson

Date 2/7/18 License No. 49563

Title:

- Land Surveyor Professional Engineer
- County Surveyor County Engineer

DOCUMENT NUMBER A 357530
Certified, Filed and or Recorded on
March 07, 2018 9:25 AM

Lynn M. Wilson

NOBLES COUNTY RECORDER
LYNN M. WILSON
507-295-5268

Pages: 2

Statement of Evidence:

R-3

North Quarter Corner of Section 30, Township 104 North, Range 42 West, 5th Principal Meridian, Nobles County, Minnesota.

1868-T.B. Walker set a post in mound with pits for the section corner.

1962- Nobles County Highway Department "Corner Ties Book" calls for a placed wood stake to mark the corner location.

1964- Nobles County Highway Department "Corner Ties Book" calls for a placed iron pin to mark the corner location.

1966- Nobles County Highway Department "Corner Ties Book" calls for a iron pin to mark the corner location.

1996- Nobles County Highway Department "Corner Ties Book" calls for a placed 3/8" X 3" rebar to mark the corner location.

2012 - Perry Zieske has a survey showing a 5/8" iron monument in place for the corner

2017 - Nobles County Highway Department set a pk

2017- Westwood Professional Services recovered a PK nail with a magnetic indication under it and 2 ties from 1996. The monument agrees with highway stationing and distances from the 2012 Zieske survey. Ties were found or set as shown on the front of this certificate.

[Handwritten signature]
2/11/18