

RS  
10

5 1/4  
Sec 22  
104  
42

COPY

Index R-15

# CERTIFICATE OF LOCATION OF GOVERNMENT CORNER

NORTH QUARTER Corner of Section 27, Township 104N, Range 42W

5th Principal Meridian, State of Minnesota, County of Nobles.

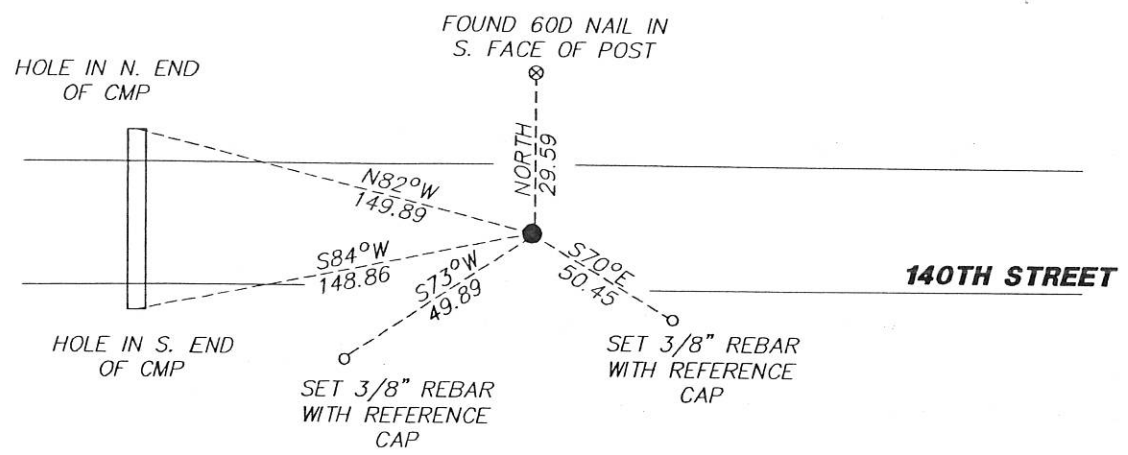
At the corner location shown on the sketch:

On 11/29/2017 found a 12" SPIKE WITH NOTHING UNDER.  
DATE

left monument as found       lowered monument       removed monument (explain)

On 12/27/2017 placed a 1/2" REBAR CAPPED LS 49563 DOWN 0.3' ON CENTERLINE OF THE ROAD.  
DATE

## SKETCH OF REFERENCE TIES



N.T.S.

Statement of evidence for this corner location is on back of this page.

I hereby certify that this document was researched and prepared by me or under my direct supervision and that I am a licensed Land Surveyor under the laws of the State of Minnesota.

Signature Lynn M. Wilson

Date 2/7/18 License No. 49563

Title:

- Land Surveyor       Professional Engineer
- County Surveyor       County Engineer

DOCUMENT NUMBER A 357522  
Certified, Filed and or Recorded on  
March 07, 2018 8:45 AM

*Lynn M. Wilson*

NOBLES COUNTY RECORDER  
LYNN M. WILSON <sup>ie</sup>  
507-295-5268

Pages: 2

**Statement of Evidence:**

R-15

North Quarter Corner of Section 27, Township 104 North, Range 42 West, 5<sup>th</sup> Principal Meridian, Nobles County, Minnesota.

1868-T.B. Walker set a post in mound with pits for the section corner.

1901- Nobles County Highway Department "Corner Ties Book" calls for a stone to mark the corner location.

1963- Nobles County Highway Department "Corner Ties Book" calls for a stone and an iron pin to mark the corner location.

2013-Perry Zeiske shows this corner as a found iron monument for a survey in Section 22

2017- Westwood Professional Services recovered a 12" spike (with nothing under). The monument agrees with occupation, distances to adjacent section corners, and distances from the 2013 Zieske survey. A 5/8" rebar capped 49563 was set in place of the found spike to mark the corner. Ties were found or set as shown on the front of this certificate.

Analysis of the recovered data, field evidence and survey measurements, indicates that the monument found is the correct perpetuation of this corner. For additional information concerning this corner please contact Westwood Professional Services.

*Kris Wroolie*  
3/1/15