

S/A Sec 24 104 42

COPY

Index R-23

# CERTIFICATE OF LOCATION OF GOVERNMENT CORNER

NORTH QUARTER Corner of Section 25, Township 104N, Range 42W

5th Principal Meridian, State of Minnesota, County of Nobles.

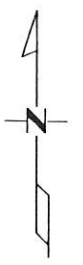
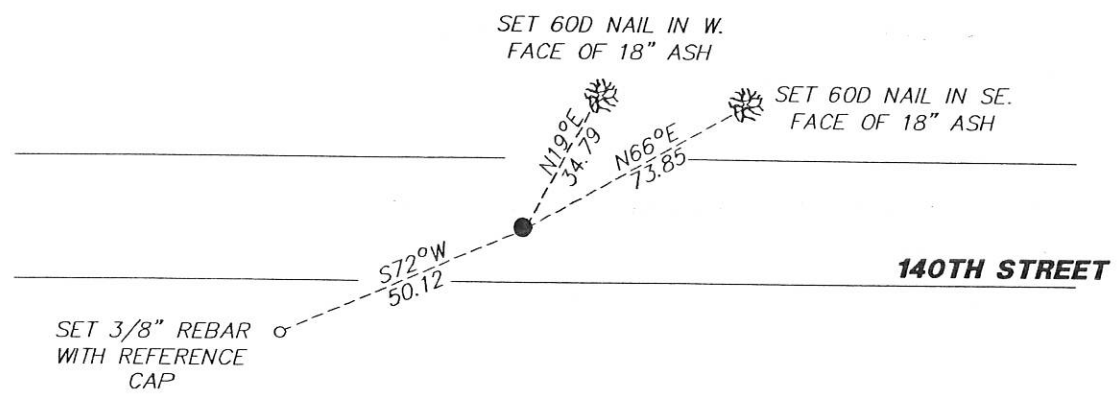
At the corner location shown on the sketch:

On 11/09/2017 found a NOTHING.  
DATE

left monument as found       lowered monument       removed monument (explain)

On 12/27/2017 placed a 1/2" REBAR CAPPED LS 49563 DOWN 0.4' ON CENTERLINE AND FENCES  
DATE RUNNING NORTH AND SOUTH.

## SKETCH OF REFERENCE TIES



N.T.S.

Statement of evidence for this corner location is on back of this page.

I hereby certify that this document was researched and prepared by me or under my direct supervision and that I am a licensed Land Surveyor under the laws of the State of Minnesota.

Signature Lynn M. Wilson

Date 2/7/18 License No. 49563

Title:

- Land Surveyor       Professional Engineer
- County Surveyor       County Engineer

OFFICE OF THE COUNTY RECORDER  
**DOCUMENT NUMBER A 357520**  
Certified, Filed and or Recorded on  
March 07, 2018 8:35 AM

*Lynn M. Wilson*

NOBLES COUNTY RECORDER  
LYNN M. WILSON  
507-295-5268

Pages: 2

KRIS WROOLIE  
Minnesota License No. 49563

**Statement of Evidence:**

R-23

North Quarter Corner of Section 25, Township 104 North, Range 42 West, 5<sup>th</sup> Principal Meridian, Nobles County, Minnesota.

1868-T.B. Walker set a post in mound with pits for the section corner.

1901-Nobles County Highway Department "Corner Ties Book" calls for a stone as the corner position.

2017-Westwood Professional Services searched the area and did not recover any evidence of the corner. A 5/8" rebar capped LS 49563 midway and online between section corners. This location agrees well with the centerline and field line occupation. Ties were found or set as shown on the front of this certificate.

Analysis of the recovered data, field evidence and survey measurements, indicates that the monument found is the correct perpetuation of this corner. For additional information concerning this corner please contact Westwood Professional Services.

*[Handwritten signature]*  
2/1/10