

BS

S1/4
Sec 25
104
42

COPY

Index V-23

CERTIFICATE OF LOCATION OF GOVERNMENT CORNER

NOTH QUARTER Corner of Section 36, Township 104N, Range 42W

5th Principal Meridian, State of Minnesota, County of Nobles.

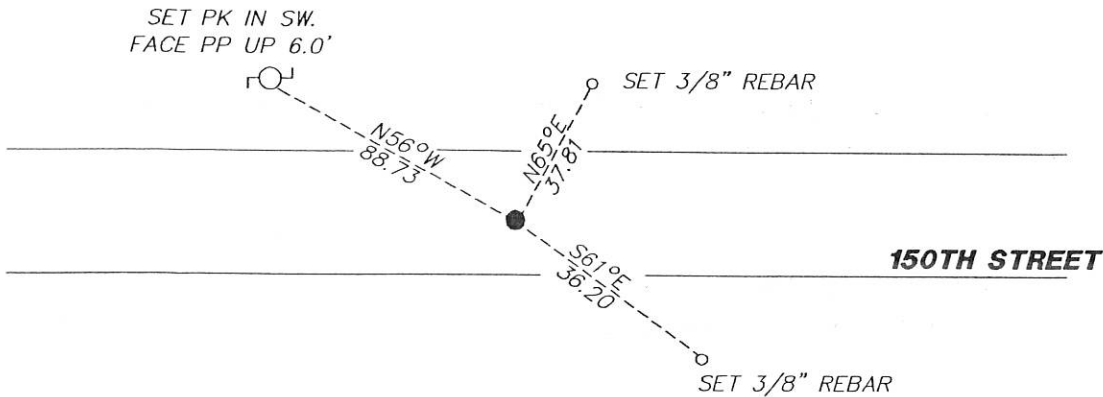
At the corner location shown on the sketch:

On 11/09/2017 found a PK NAIL ON CENTERLINE. THIS POSITION AGREES WITH OCCUPATION AND FITS WELL TO PROPORTIONATE POSITION.

left monument as found lowered monument removed monument (explain)

On _____ placed a _____
DATE

SKETCH OF REFERENCE TIES



N.T.S.

Statement of evidence for this corner location is on back of this page.

I hereby certify that this document was researched and prepared by me or under my direct supervision and that I am a licensed Land Surveyor under the laws of the State of Minnesota.

Signature *TJ Wilk*

Date 2/7/18 License No. 49563

Title:

- Land Surveyor Professional Engineer
- County Surveyor County Engineer

DOCUMENT NUMBER A 357543
Certified, Filed and or Recorded on
March 07, 2018 10:25 AM

Lynn M. Wilson

NOBLES COUNTY RECORDER
LYNN M. WILSON
507-295-5268

Pages: 2

Statement of Evidence:

V-23

North Quarter Corner of Section 36, Township 104 North, Range 42 West, 5th Principal Meridian, Nobles County, Minnesota.

1868-T.B. Walker set a post in mound with pits for the section corner

1900 - Nobles County Highway Department "Corner Ties Book" calls for a stone as the corner position.

1938 - Nobles County Highway Department "Corner Ties Book" calls for a stone as the corner position.

1968 - Nobles County Highway Department "Corner Ties Book" calls for a stone with an "X" and a 2 x 2 place with iron pin marking the corner position.

1996 - Nobles County Highway Department "Corner Ties Book" notes an iron pin set to mark the corner position. A 1 3/4" PK nail was also set.

2017-Westwood Professional Services field crews recover a PK nail on centerline. The location of the PK nail agrees with occupation and fits well to proportionate position. Accepting the location of the PK as the corner location. Ties were found or set as shown on the front of this certificate.

Analysis of the recovered data, field evidence and survey measurements, indicates that the monument found is the correct perpetuation of this corner. For additional information concerning this corner please contact Westwood Professional Services.

W. W. WOOD
8/15/15