

RS
S 1/4
sec 27
104
42

COPY

Index V-15

CERTIFICATE OF LOCATION OF GOVERNMENT CORNER

NORTH QUARTER _____ Corner of Section 34, Township 104N, Range 42W

5th Principal Meridian, State of Minnesota, County of Nobles.

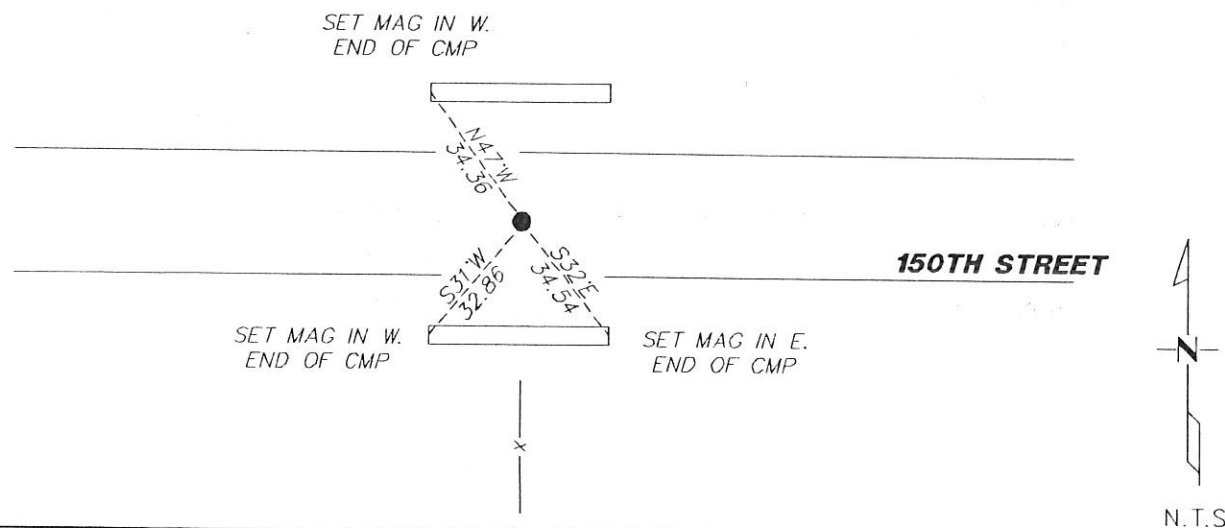
At the corner location shown on the sketch:

On 11/30/2017 found a 1/2" REBAR ON CENTERLINE AND WITH A FENCE LINE RUNNING SOUTH.
DATE

left monument as found lowered monument removed monument (explain)

On _____ placed a _____
DATE

SKETCH OF REFERENCE TIES



Statement of evidence for this corner location is on back of this page.

I hereby certify that this document was researched and prepared by me or under my direct supervision and that I am a licensed Land Surveyor under the laws of the State of Minnesota.

Signature TS Wil.

Date 2/7/18 License No. 49563

Title:

- Land Surveyor Professional Engineer
- County Surveyor County Engineer

DOCUMENT NUMBER A 357540
Certified, Filed and or Recorded on
March 07, 2018 10:15 AM

Lynn M. Wilson

NOBLES COUNTY RECORDER
LYNN M. WILSON
507-295-5268

Pages: 2

KRIS WROOLIE
Minnesota License No. 49563

Statement of Evidence:

V-15

North Quarter Corner of Section 34, Township 104 North, Range 42 West, 5th Principal Meridian, Nobles County, Minnesota.

1868-T.B. Walker set a post in mound with pits for the section corner

1901- Nobles County Highway Department "Corner Ties Book" calls for a stone to mark the corner location.

2017- Westwood Professional Services recovered 1/2" rebar on centerline and a fence line to the south. This agrees very closely with the 1901 distances to the north and east. Accepting the rebar at occupation as the best available evidence for the corner. Ties were found or set as shown on the front of this certificate.

Analysis of the recovered data, field evidence and survey measurements, indicates that the monument found is the correct perpetuation of this corner. For additional information concerning this corner please contact Westwood Professional Services.

[Handwritten signature]
3/1/18