

3/4  
Sec 29  
104 42

COPY

Index V-7

# CERTIFICATE OF LOCATION OF GOVERNMENT CORNER

NORTH QUARTER Corner of Section 32, Township 104N, Range 42W

5th Principal Meridian, State of Minnesota, County of Nobles.

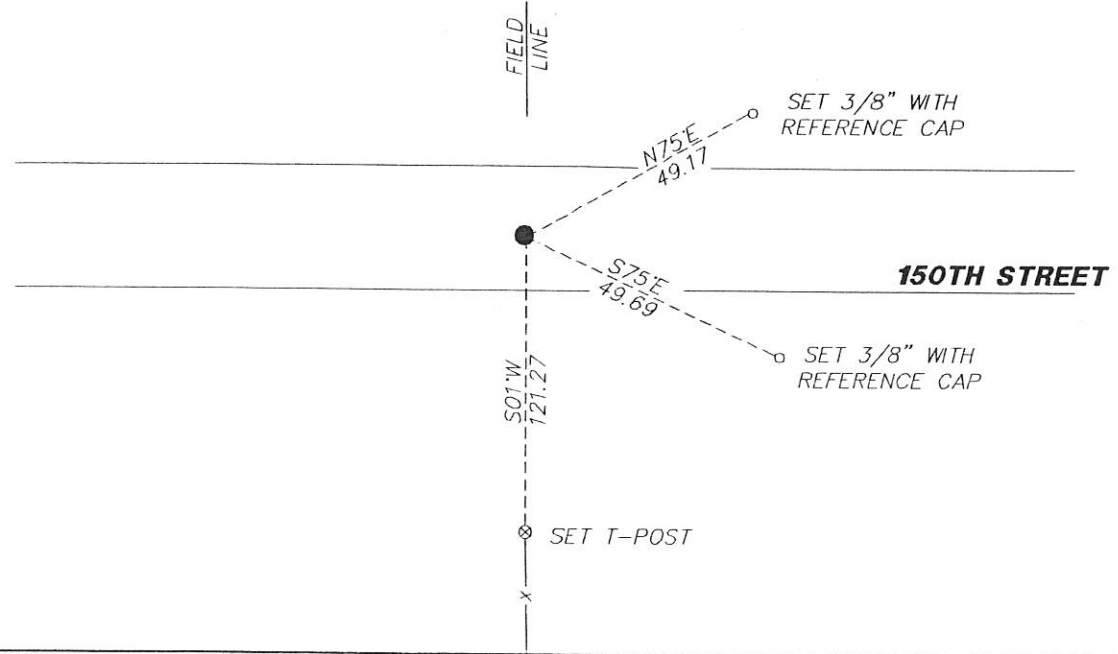
At the corner location shown on the sketch:

On 11/30/2017 found a 60D SPIKE ON CENTERLINE AND FENCE LINE RUNNING NORTH.  
DATE

left monument as found     lowered monument     removed monument (explain)

On 12/27/2017 placed a 1/2" REBAR CAPPED LS 49563 DOWN 0.5' REPLACING THE SPIKE.  
DATE

### SKETCH OF REFERENCE TIES



Statement of evidence for this corner location is on back of this page.

I hereby certify that this document was researched and prepared by me or under my direct supervision and that I am a licensed Land Surveyor under the laws of the State of Minnesota.

Signature Lynn M. Wilson

Date 2/7/18 License No. 49563

Title:

- Land Surveyor     Professional Engineer
- County Surveyor     County Engineer

DOCUMENT NUMBER A 357536  
Certified, Filed and or Recorded on  
March 07, 2018 9:53 AM

*Lynn M. Wilson*

NOBLES COUNTY RECORDER  
LYNN M. WILSON  
507-295-5268

Pages: 2

KRIS WROOLIE  
Minnesota License No. 49563

**Statement of Evidence:**

V-7

North Quarter Corner of Section 32, Township 104 North, Range 42 West, 5<sup>th</sup> Principal Meridian, Nobles County, Minnesota.

1868-T.B. Walker set a post in mound with pits for the section corner.

2017- Westwood Professional Services located a 60d spike on centerline and fence lines to the north and occupation lines to the south. Accepting the spike at occupation as the best available evidence for the corner. A 5/8" rebar capped 49563 was set in place of the found spike. Ties were set as shown on the front of this certificate.

Analysis of the recovered data, field evidence and survey measurements, indicates that the monument found is the correct perpetuation of this corner. For additional information concerning this corner please contact Westwood Professional Services.

*Kris Wroolie*  
Kris