

5/4
sec 31 104 42

COPY

Index A-3

CERTIFICATE OF LOCATION OF GOVERNMENT CORNER

NORTH QUARTER _____ Corner of Section 6, Township 103N, Range 42W

5th Principal Meridian, State of Minnesota, County of Nobles.

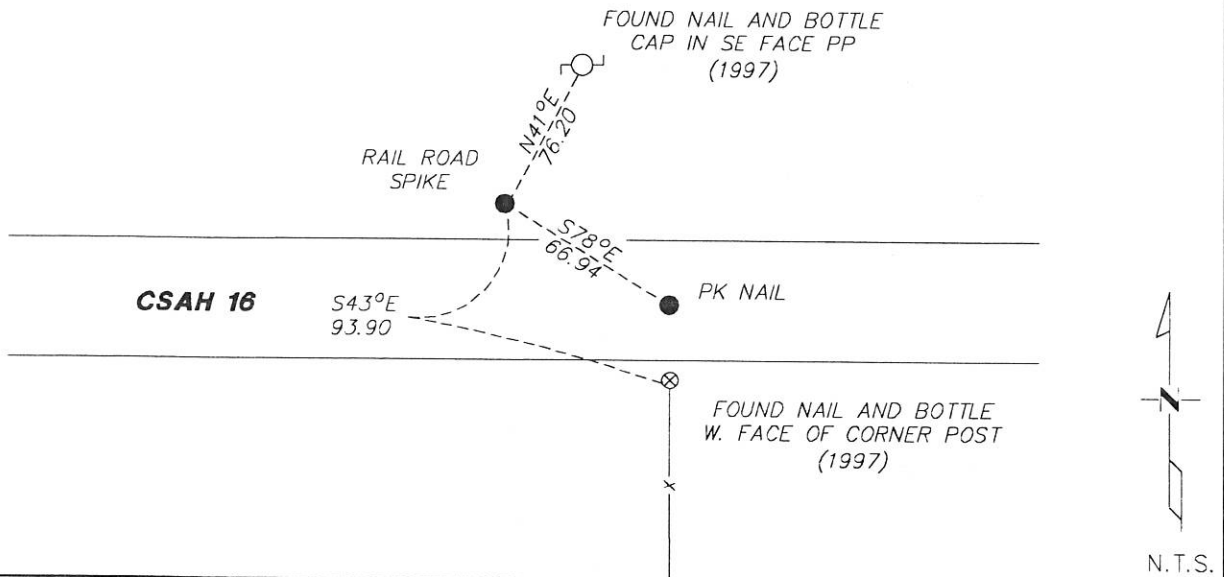
At the corner location shown on the sketch:

On 12/6/17 found a RAIL ROAD SPIKE 12' NORTH OF CENTERLINE
DATE

left monument as found lowered monument removed monument (explain)

On _____ placed a _____
DATE

SKETCH OF REFERENCE TIES



Statement of evidence for this corner location is on back of this page.

I hereby certify that this document was researched and prepared by me or under my direct supervision and that I am a licensed Land Surveyor under the laws of the State of Minnesota.

Signature *Lynn Wilson*

Date 1/8/18 License No. 49563

Title:

- Land Surveyor Professional Engineer
 County Surveyor County Engineer

DOCUMENT NUMBER A 357390
Certified, Filed and or Recorded on
February 28, 2018 12:35 PM

Lynn Wilson

NOBLES COUNTY RECORDER
LYNN M. WILSON
507-295-5268

Pages: 2

KRIS WROOLIE
Minnesota License No. 49563

Statement of Evidence:

A-3

North Quarter Corner of Section 6, Township 103 North, Range 42 West, 5th Principal Meridian, Nobles County, Minnesota.

1869-Deputy Surveyor set a post in mound with pits.

1910- Nobles County Highway Department "Corner Ties Book" calls for a stone to mark the corner location.

1918- Nobles County Highway Department "Corner Ties Book" calls for a stone to mark the corner location.

1997 - Madsen Land Surveying set a 3/4" pin on a straight line between the nw and ne corner in accordance with a 1918 survey

2016- Nobles County Highway Department "Corner Ties Book" calls for a PK nail was set after an overlay to mark the corner location.

2017- Westwood Professional Services recovered a PK nail with a magnetic indication under it on centerline and a fence line to the south and a rail road spike that agrees with the 1997 Madsen position. Accepting the rail road spike, at the Madsen position, which also agrees with the 1918 distances as the best available evidence for the corner. Ties were found or set as shown on the front of this certificate.

Analysis of the recovered data, field evidence and survey measurements, indicates that the monument found is the correct perpetuation of this corner. For additional information concerning this corner please contact Westwood Professional Services.