

5/14
Sec 33 104 42

COPY

Index A-11

CERTIFICATE OF LOCATION OF GOVERNMENT CORNER

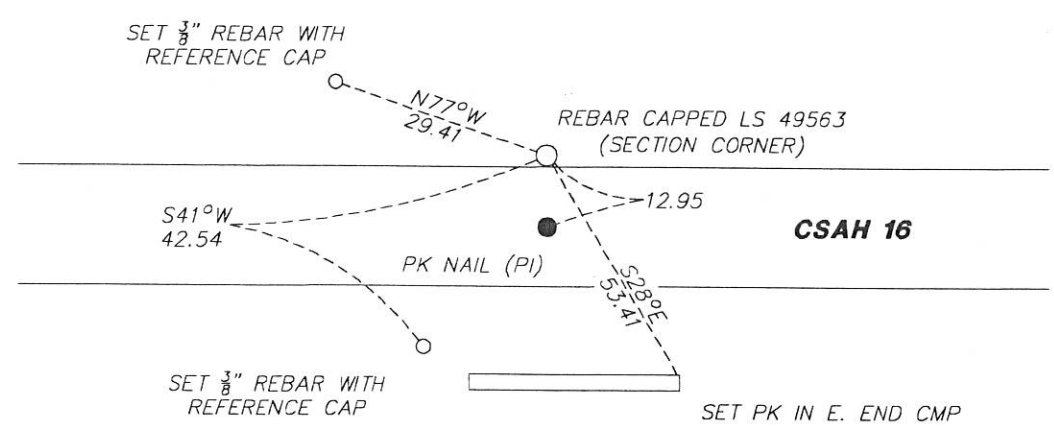
NORTH QUARTER Corner of Section 4, Township 103N, Range 42W

5th Principal Meridian, State of Minnesota, County of Nobles.

At the corner location shown on the sketch:

- On _____ found a _____
DATE
- left monument as found lowered monument removed monument (explain)
- On 12/28/17 placed a 1/2" REBAR CAPPED 49563 FROM HIGHWAY PLANS
DATE

SKETCH OF REFERENCE TIES



N.T.S.

Statement of evidence for this corner location is on back of this page.

I hereby certify that this document was researched and prepared by me or under my direct supervision and that I am a licensed Land Surveyor under the laws of the State of Minnesota.

Signature K.W.L.

Date 1/8/18 License No. 49563

Title:

- Land Surveyor Professional Engineer
- County Surveyor County Engineer

DOCUMENT NUMBER A 357387
Certified, Filed and or Recorded on
February 28, 2018 12:20 PM

Lynn M. Wilson

NOBLES COUNTY RECORDER
LYNN M. WILSON
507-295-5266

Pages: 2

Statement of Evidence:

A-11

North Quarter Corner of Section 4, Township 103 North, Range 42 West, 5th Principal Meridian, Nobles County, Minnesota.

1869-Deputy Surveyor set a post in mound with pits.

1897- Nobles County Highway Department "Corner Ties Book" calls for a stone to mark the corner location.

1902- Nobles County Highway Department "Corner Ties Book" calls for a stone to mark the corner location.

1922- Nobles County Highway Department "Corner Ties Book" calls for a placed iron pin to mark the corner location.

1955- Nobles County Highway Department "Corner Ties Book" calls for a stake to mark the corner location. Highway plans show the corner to be 12.95' of the highway PI.

1967- Nobles County Highway Department "Corner Ties Book" calls for a placed iron pin to mark the corner location.

1967- Nobles County Highway Department "Corner Ties Book" calls for a placed iron rod and set ties to mark the corner location.

2016- Nobles County Highway Department "Corner Ties Book" calls for a PK nail was set after an overlay to mark the corner location.

2017- Westwood Professional Services recovered a PK nail at the highway PI with a magnetic indication under it on centerline. A ½" rebar capped 49563 was placed 12.95' north of the PI per highway plans for the corner. Ties were found or set as shown on the front of this certificate.

Analysis of the recovered data, field evidence and survey measurements, indicates that the monument found is the correct perpetuation of this corner. For additional information concerning this corner please contact Westwood Professional Services.

8/18/11