

S¹/₄ Sec 35 104 42

COPY

Index A-19

CERTIFICATE OF LOCATION OF GOVERNMENT CORNER

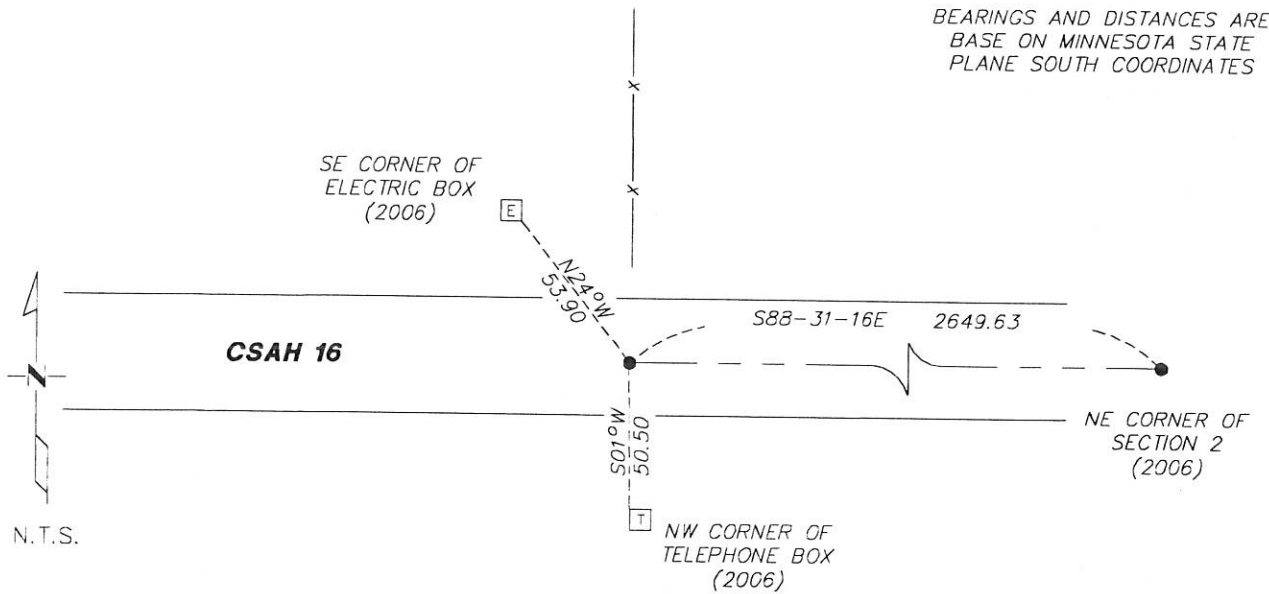
NORTH QUARTER Corner of Section 2, Township 103N, Range 42W
5th Principal Meridian, State of Minnesota, County of Nobles.

At the corner location shown on the sketch:

- On 12/05/17 found a PK ON CENTERLINE AND A FENCE LINE TO THE NORTH
DATE
- left monument as found lowered monument removed monument (explain)
- On _____ placed a _____
DATE

SKETCH OF REFERENCE TIES

BEARINGS AND DISTANCES ARE
BASE ON MINNESOTA STATE
PLANE SOUTH COORDINATES



Statement of evidence for this corner location is on back of this page.

I hereby certify that this document was researched and prepared by me or under my direct supervision and that I am a licensed Land Surveyor under the laws of the State of Minnesota.

Signature L.M. Wilson

Date 1/8/18 License No. 49563

Title:

- Land Surveyor Professional Engineer
- County Surveyor County Engineer

DOCUMENT NUMBER A 357382
Certified, Filed and or Recorded on
February 28, 2018 11:50 AM

Lynn Wilson

NOBLES COUNTY RECORDER
LYNN M. WILSON
507-295-5268

Pages: 2

Statement of Evidence:

A-19

North Quarter Corner of Section 2, Township 103 North, Range 42 West, 5th Principal Meridian, Nobles County, Minnesota.

1869-Deputy Surveyor set a post in mound with pits.

1901- Nobles County Highway Department "Corner Ties Book" calls for a stone to mark the corner location.

1922- Nobles County Highway Department "Corner Ties Book" calls for a stone to mark the corner location.

1943- Nobles County Highway Department "Corner Ties Book" calls for a stone to mark the corner location.

1967- Nobles County Highway Department "Corner Ties Book" calls for a pipe and a placed iron rod to mark the corner location.

2006 - Ulteig Engineers found a 5/8" rebar at the road centerline and a fence line to the north, set ties, and file a Certificate of Location doc. no. 311285

2016 - County Highway Department set a PK nail after an overlay

2017- Westwood Professional Services recovered a PK nail with a magnetic indication under it on centerline and fence line to the north, and one ties from the 2006 Certificate. Accepting as the best available evidence for the corner. Ties were found or set as shown on the front of this certificate