

SW
Sec 10
104
42

COPY

Index J-13

CERTIFICATE OF LOCATION OF GOVERNMENT CORNER

NORTHEAST Corner of Section 16, Township 104N, Range 42W

5th Principal Meridian, State of Minnesota, County of Nobles.

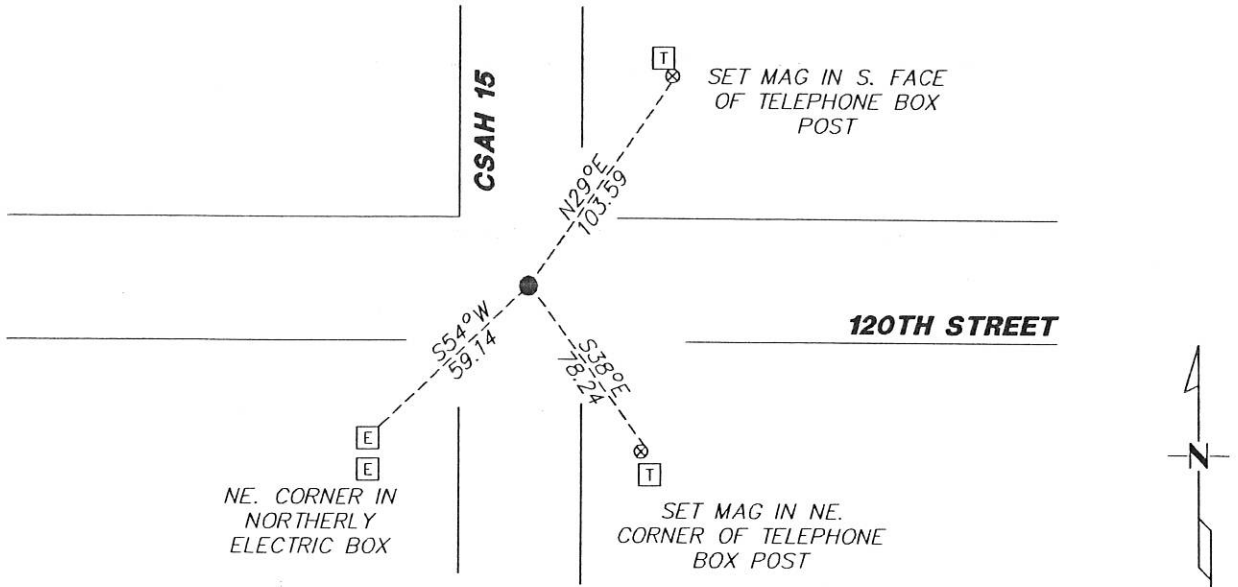
At the corner location shown on the sketch:

On 11/29/2017 found a PK AT ROAD CENTERLINE INTERSECTION.
DATE

left monument as found lowered monument removed monument (explain)

On _____ placed a _____
DATE

SKETCH OF REFERENCE TIES



Statement of evidence for this corner location is on back of this page.

I hereby certify that this document was researched and prepared by me or under my direct supervision and that I am a licensed Land Surveyor under the laws of the State of Minnesota.

Signature Lynn M. Wilson

Date 2/7/18 License No. 49563

Title:

- Land Surveyor Professional Engineer
- County Surveyor County Engineer

DOCUMENT NUMBER **A 397502**

Certified, Filed and or Recorded on

March 06, 2018 3:00 PM

Lynn M. Wilson

NOBLES COUNTY RECORDER
LYNN M. WILSON
507-295-5268

Pages: 2

Statement of Evidence:

J-13

Northeast Corner of Section 16, Township 104 North, Range 42 West, 5th Principal Meridian, Nobles County, Minnesota.

1868-Deputy Surveyor set a post in mound with pits

1894- Nobles County Highway Department "Corner Ties Book" calls for a stone to mark the corner location.

1900- Nobles County Highway Department "Corner Ties Book" calls for a stone to mark the corner location.

1980- Nobles County Highway Department "Corner Ties Book" calls for an iron pin to mark the corner location.

1996 - Nobles County Highway Department "Corner Ties Book" states that an iron pin was set and a PK was set.

2016 - Nobles County Highway Department "Corner Ties Book" states that a PK nail was set after an overlay.

2017- Westwood Professional Services recovered a PK with a strong magnetic indication under it at the road centerline intersection. Ties were found or set as shown on the front of this certificate

Analysis of the recovered data, field evidence and survey measurements, indicates that the monument found is the correct perpetuation of this corner. For additional information concerning this corner please contact Westwood Professional Services.