

SW  
SEC 11  
104N 42W

### CERTIFICATE OF LOCATION OF GOVERNMENT CORNER

NORTHEAST Corner of Section 15, Township 104N, Range 42W

5th Principal Meridian, State of Minnesota, County of Nobles.

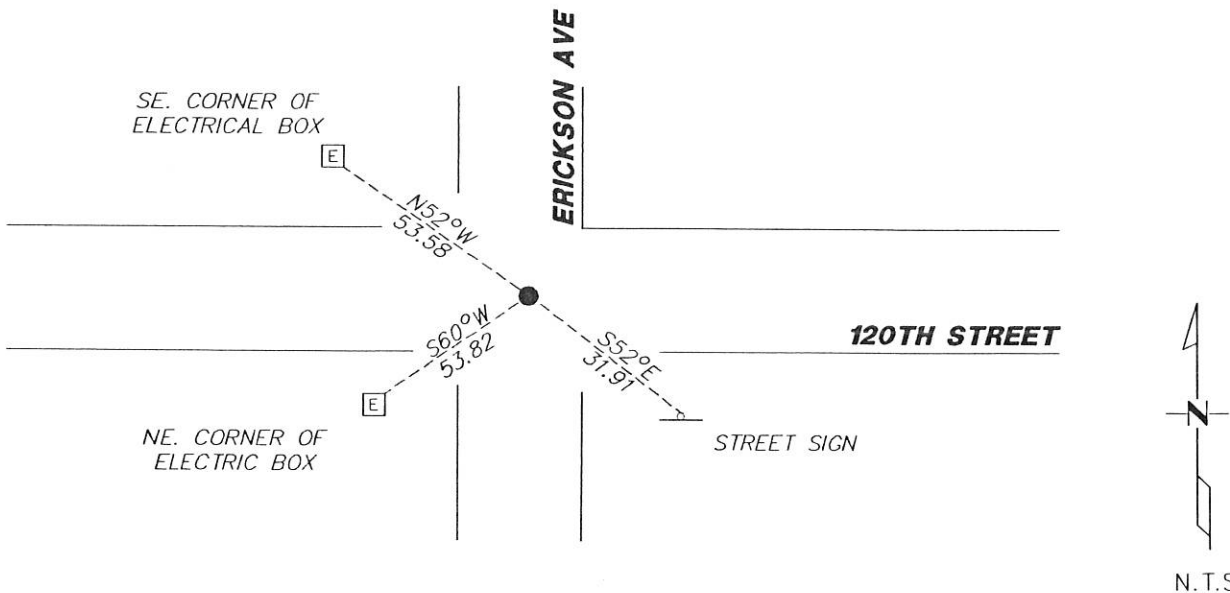
At the corner location shown on the sketch:

On 11/29/2017 found a REBAR WITH AN ILLEGIBLE NUMBER DOWN 0.8'  
DATE

left monument as found       lowered monument       removed monument (explain)

On \_\_\_\_\_ placed a \_\_\_\_\_  
DATE

#### SKETCH OF REFERENCE TIES



Statement of evidence for this corner location is on back of this page.

I hereby certify that this document was researched and prepared by me or under my direct supervision and that I am a licensed Land Surveyor under the laws of the State of Minnesota.

Signature *T.S. Wilson*

Date 2/7/18 License No. 49563

Title:

- Land Surveyor       Professional Engineer
- County Surveyor       County Engineer

**DOCUMENT NUMBER A 357491**  
Certified, Filed and or Recorded on  
March 06, 2018 11:55 AM

*Lynn M. Wilson*

NOBLES COUNTY RECORDER  
LYNN M. WILSON  
507 295-5258

Pages: 2

**Statement of Evidence:**

J-17

Northeast Corner of Section 15, Township 104 North, Range 42 West, 5<sup>th</sup> Principal Meridian, Nobles County, Minnesota.

1868-Deputy Surveyor set a post in mound with pits

1938- Nobles County Highway Department "Corner Ties Book" calls for a stone to mark the corner location.

1979 - Nobles County Highway Department "Corner Ties Book" states that the stone was found and a bridge pin was set.

2008 - Ulteig Engineers found a rebar with an unreadable cap at the road centerline intersection, set ties, and file a Certificate of Location doc. no. 311314

2017- Westwood Professional Services recovered a rebar with an unreadable cap at the road centerline intersection. Ties were found or set as shown on the front of this certificate

Analysis of the recovered data, field evidence and survey measurements, indicates that the monument found is the correct perpetuation of this corner. For additional information concerning this corner please contact Westwood Professional Services.

*Westwood  
8/11/15*