

25 SW Sec 13 104 42

COPY

Index N-21

CERTIFICATE OF LOCATION OF GOVERNMENT CORNER

NORTHEAST Corner of Section 23, Township 104N, Range 42W

5th Principal Meridian, State of Minnesota, County of Nobles.

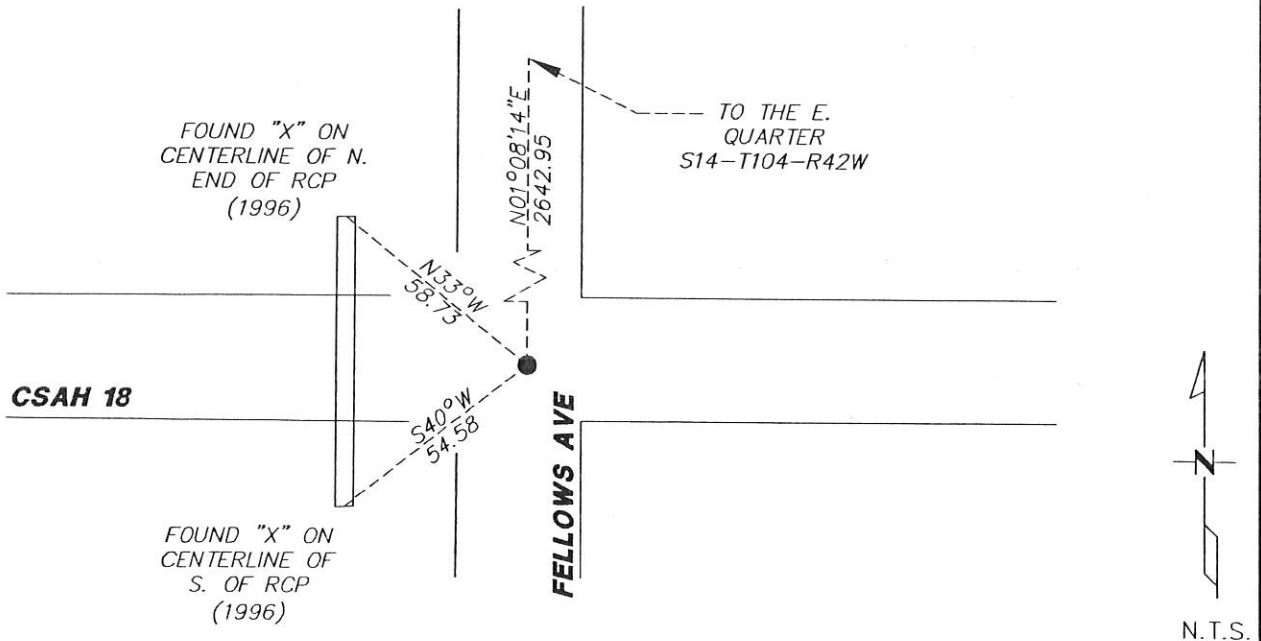
At the corner location shown on the sketch:

On 11/10/2017 found a PK NAIL IN THE PAVEMENT THAT AGREES WITH HIGHWAY STATIONING.
DATE

left monument as found lowered monument removed monument (explain)

On _____ placed a _____
DATE

SKETCH OF REFERENCE TIES



N.T.S.

Statement of evidence for this corner location is on back of this page.

I hereby certify that this document was researched and prepared by me or under my direct supervision and that I am a licensed Land Surveyor under the laws of the State of Minnesota.

Signature L.M. Wilson

Date 2/7/18 License No. 49563

Title:

- Land Surveyor Professional Engineer
- County Surveyor County Engineer

DOCUMENT NUMBER A 357014
Certified, Filed and or Recorded on
March 07, 2018 8:03 AM

Lynn M. Wilson

NOBLES COUNTY RECORDER
LYNN M. WILSON
507-295-5268

Pages: 2

Statement of Evidence:

N-21

Northeast Corner of Section 23, Township 104 North, Range 42 West, 5th Principal Meridian, Nobles County, Minnesota.

1868-Deputy Surveyor set a post in mound with pits

1900- Nobles County Highway Department "Corner Ties Book" calls for a stone set to mark the corner location.

1936 - Nobles County Highway Department "Corner Ties Book" calls for an iron pin to mark the corner location.

1962 - Nobles County Highway Department "Corner Ties Book" states an iron pin was place for the corner

1970 - Nobles County Highway Department "Corner Ties Book" states an iron pipe with 60d spike was place for the corner

1991 - Nobles County Highway Department "Corner Ties Book" states a that the corner was found.

1996 - Nobles County Highway Department "Corner Ties Book" states a 3/8" X 3" rebar was placed for the corner and three ties given:

N&D in pp	N.E.	58.83'
X in cl conc culv	S.W.	54.58'
X in cl conc culv	N.W.	58.73'

2006 - Ulteig Engineering Inc. found a 5/8" rebar and filed a Certificate of Location Doc. No. 311319

2017 - The county hwy dept set a pk nail after new paving

2017- Westwood Professional Services recovered a pk nail in the new pavement that agrees with highway stationing, two ties from 1996, and with adjacent section corners from the 2006 Certificate of Location. Ties were found or set as shown on the front of this certificate.

3/1/15