

69
15

SW
Sec 14
104
42

COPY

Index N-17

CERTIFICATE OF LOCATION OF GOVERNMENT CORNER

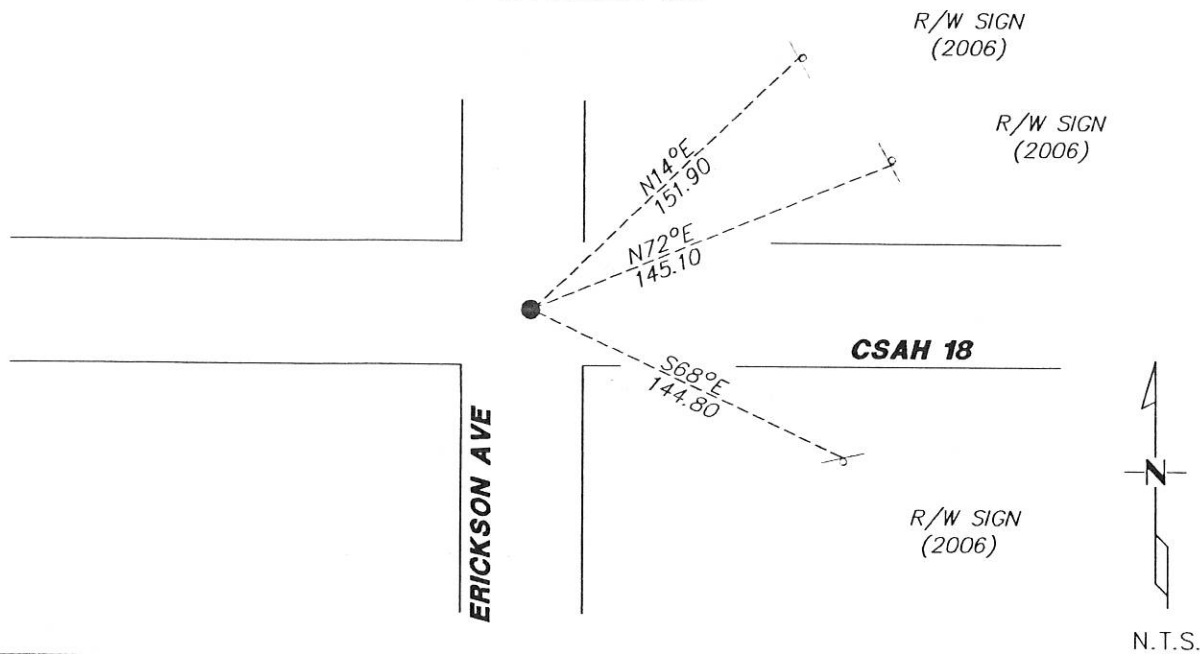
NORTHEAST Corner of Section 22, Township 104N, Range 42W

5th Principal Meridian, State of Minnesota, County of Nobles.

At the corner location shown on the sketch:

- On 11/29/2017 found a PK NAIL WITH THE PAVEMENT THAT AGREES WIT HIGHWAY STATIONING
DATE FROM 1996.
- left monument as found lowered monument removed monument (explain)
- On _____ placed a _____
DATE

SKETCH OF REFERENCE TIES



Statement of evidence for this corner location is on back of this page.

I hereby certify that this document was researched and prepared by me or under my direct supervision and that I am a licensed Land Surveyor under the laws of the State of Minnesota.

Signature Lynn M. Wilson

Date 2/7/18 License No. 49563

Title:

- Land Surveyor Professional Engineer
- County Surveyor County Engineer

DOCUMENT NUMBER A 357512
Certified, Filed and or Recorded on
March 06, 2018 3:10 PM

Lynn M. Wilson

NOBLES COUNTY RECORDER
LYNN M. WILSON
507-295-5268

Pages: 2

Statement of Evidence:

N-17

Northeast Corner of Section 22, Township 104 North, Range 42 West, 5th Principal Meridian, Nobles County, Minnesota.

1868-Deputy Surveyor set a post in mound with pits

1901- Nobles County Highway Department "Corner Ties Book" calls for a stone to mark the corner location.

1912- Nobles County Highway Department "Corner Ties Book" calls for a stone set to mark the corner location.

1937 - Nobles County Highway Department "Corner Ties Book" calls for an iron pin to mark the corner location.

1962 - Nobles County Highway Department "Corner Ties Book" states a wood stake was placed for the corner

1970 - Nobles County Highway Department "Corner Ties Book" states a 1" iron pipe was in place for the corner

1991 - Nobles County Highway Department "Corner Ties Book" states that the corner was found.

1996 - Nobles County Highway Department "Corner Ties Book" states a 3/8" X 3" rebar was placed for the corner.

2006 - Ulteig Engineering Inc. found a 5/8" rebar, set 4 ties, and filed a Certificate of Location Doc. No. 311318

2017 - The county highway department set a pk nail after new paving

2017- Westwood Professional Services recovered a pk nail in the new pavement that agrees with highway stationing and ties from 2006. Ties were found or set as shown on the front of this certificate.

Analysis of the recovered data, field evidence and survey measurements, indicates that the monument found is the correct perpetuation of this corner. For additional information concerning this corner please contact Westwood Professional Services.

8/1/18