

SW sec 29 104 42

CERTIFICATE OF LOCATION OF GOVERNMENT CORNER

NORTHEAST Corner of Section 31, Township 104N, Range 42W

5th Principal Meridian, State of Minnesota, County of Nobles.

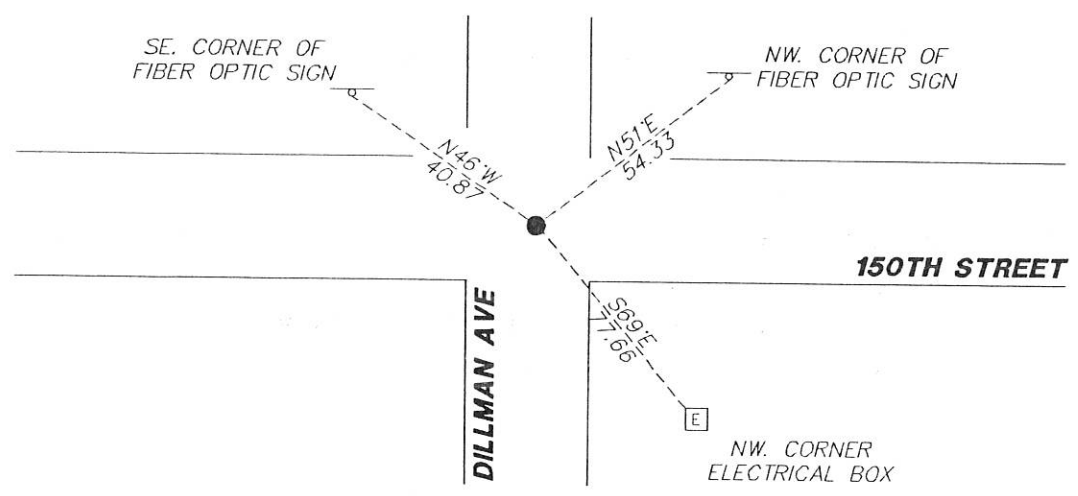
At the corner location shown on the sketch:

On 11/30/2017 found a NOTHING.
DATE

left monument as found lowered monument removed monument (explain)

On 12/27/2017 placed a 1/2" REBAR CAPPED LS 49563 DOWN 0.5' AT CENTERLINE INTERSECTION.
DATE

SKETCH OF REFERENCE TIES



N.T.S.

Statement of evidence for this corner location is on back of this page.

I hereby certify that this document was researched and prepared by me or under my direct supervision and that I am a licensed Land Surveyor under the laws of the State of Minnesota.

Signature L.M. Wilson

Date 2/7/18 License No. 49563

Title:

- Land Surveyor Professional Engineer
- County Surveyor County Engineer

DOCUMENT NUMBER A 357534
Certified, Filed and or Recorded on
March 07, 2018 9:45 AM

Lynni M. Wilson

NOBLES COUNTY RECORDER
LYNNI M. WILSON
507-295-5266

Pages: 2

Statement of Evidence:

V-5

Northeast Corner of Section 31, Township 104 North, Range 42 West, 5th Principal Meridian, Nobles County, Minnesota.

1868-T.B. Walker set a post in mound with pits for the section corner.

1910- Nobles County Highway Department "Corner Ties Book" calls for a stone to mark the corner location.

1935- Nobles County Highway Department "Corner Ties Book" calls for a stone to mark the corner location.

2017- Westwood Professional Services located a north/south/east/west centerline intersection. This long standing occupation agrees with adjacent section corners and is accepted as the best available evidence for the corner. A 5/8" rebar capped 49563 was placed at the centerline intersection to mark the corner. Ties were set as shown on the front of this certificate.

Analysis of the recovered data, field evidence and survey measurements, indicates that the monument found is the correct perpetuation of this corner. For additional information concerning this corner please contact Westwood Professional Services.

[Handwritten signature]
8/1/15