

CERTIFICATE OF LOCATION OF GOVERNMENT CORNER

NORTHEAST Corner of Section 9, Township 104N, Range 42W

5th Principal Meridian, State of Minnesota, County of Nobles.

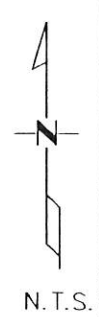
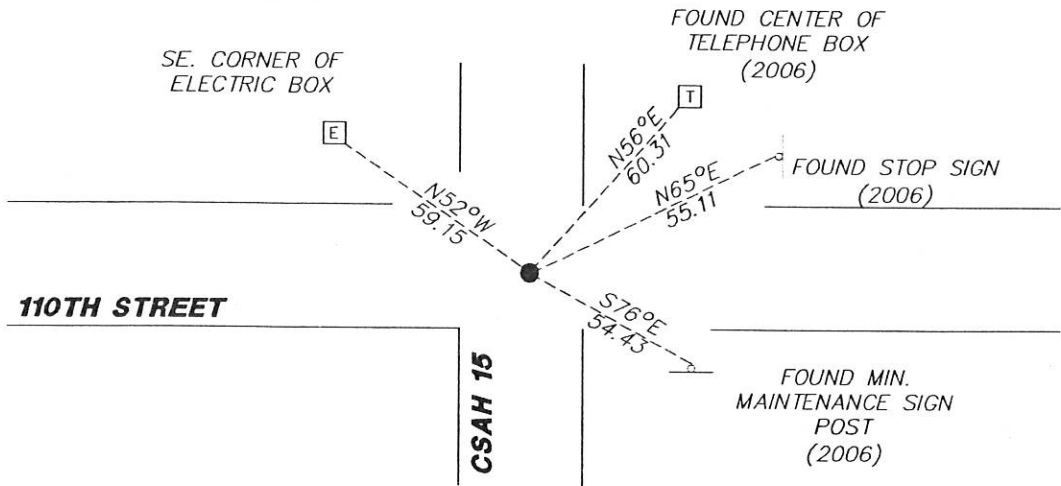
At the corner location shown on the sketch:

On 11/28/2017 found a PK NAIL WITH A MAGNETIC INDICATION UNDER IT IN THE CENTERLINE INTERSECTION.

left monument as found lowered monument removed monument (explain)

On _____ placed a _____

SKETCH OF REFERENCE TIES



Statement of evidence for this corner location is on back of this page.

I hereby certify that this document was researched and prepared by me or under my direct supervision and that I am a licensed Land Surveyor under the laws of the State of Minnesota.

Signature L.W.

Date 2/7/18 License No. 49563

Title:

- Land Surveyor Professional Engineer
- County Surveyor County Engineer

DOCUMENT NUMBER **357482**
Certified, Filed and Recorded on
March 06 2018 10:10 AM

Lynn Wilson

NOBLES COUNTY RECORDER
LYNN M. WILSON
507-295-5288

Statement of Evidence:

E-13

Northeast Corner of Section 9, Township 104 North, Range 42 West, 5th Principal Meridian, Nobles County, Minnesota.

1868-Deputy Surveyor set a post in mound with pits

1900- Nobles County Highway Department "Corner Ties Book" calls for a stone set to mark the corner location.

1915 - Nobles County Highway Department "Corner Ties Book" calls for a stone to mark the corner location

1924 - Nobles County Highway Department "Corner Ties Book" calls for a stone to mark the corner location

1937 - Nobles County Highway Department "Corner Ties Book" calls for a stone to mark the corner location

1951 - Nobles County Highway Department "Corner Ties Book" calls for a stone and an iron pin to mark the corner location

1962 - Nobles County Highway Department "Corner Ties Book" calls for an iron pin and a wood stake to mark the corner location

1980 - Nobles County Highway Department "Corner Ties Book" calls for an iron pin to mark the corner location

1996 - Nobles County Highway Department "Corner Ties Book" calls for an iron pin and a PK nail placed to mark the corner location

2006 - Ulteig Engineers found a rebar in the road centerline intersection, set ties, and file a Certificate of Location doc. no. 311300

2016 - Nobles County Highway Department "Corner Ties Book" calls for a PK nail placed after an overlay to mark the corner location

2017- Westwood Professional Services recovered a PK nail with a magnetic indication under it in the centerline intersection. Ties were found or set as shown on the front of this certificate

3/17/18