

SW
SEC 31
104 42

COPY

Index A-25

CERTIFICATE OF LOCATION OF GOVERNMENT CORNER

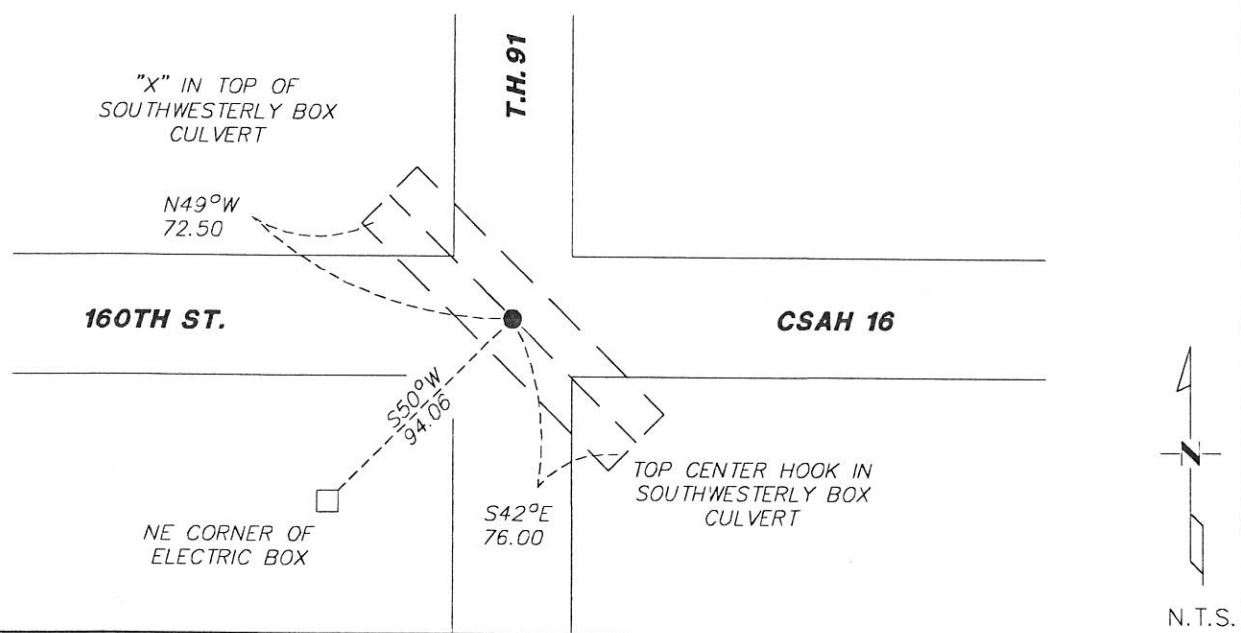
NORTHEAST Corner of Section 1 , Township 103N , Range 43W

5th Principal Meridian, State of Minnesota, County of Nobles.

At the corner location shown on the sketch:

- On 12/01/17 found a PK NAIL AT THE CENTERLINE INTERSECTION
DATE
- left monument as found lowered monument removed monument (explain)
- On placed a
DATE

SKETCH OF REFERENCE TIES



Statement of evidence for this corner location is on back of this page.

I hereby certify that this document was researched and prepared by me or under my direct supervision and that I am a licensed Land Surveyor under the laws of the State of Minnesota.

Signature *K. Wilson*

Date 1/8/18 License No. 49563

Title:

- Land Surveyor Professional Engineer
- County Surveyor County Engineer

DOCUMENT NUMBER A 35741.7
Certified, Filed and or Recorded on
March 01, 2018 9:10 AM

Lynne Wilson

NOBLES COUNTY RECORDER
LYNNE M. WILSON
507-293-5268

RS

Statement of Evidence:

A-25

Northeast Corner of Section 1, Township 103 North, Range 43 West, 5th Principal Meridian, Nobles County, Minnesota.

1867-Deputy Surveyor set a post in mound with pits.

1892- Nobles County Highway Department "Corner Ties Book" calls for a stone to mark the corner location.

1910- Nobles County Highway Department "Corner Ties Book" calls for a stone to mark the corner location.

1918- Nobles County Highway Department "Corner Ties Book" calls for a stone to mark the corner location.

1922- Nobles County Highway Department "Corner Ties Book" calls for a stone to mark the corner location.

1997- Madsen Land Surveying set a 3/4" pin and set ties

2016- Nobles County Highway Department "Corner Ties Book" calls for a PK nail was set after an overlay to mark the corner location.

2017- Westwood Professional Services recovered a PK nail at the centerline intersection. Position agrees with highway plans and distances to adjacent section corners. Accepting as the best available evidence for the corner. Ties were found or set as shown on the front of this certificate.