

SW
Sec 33
104
42

COPY

Index A-9

CERTIFICATE OF LOCATION OF GOVERNMENT CORNER

NORTHEAST Corner of Section 5, Township 103N, Range 42W

5th Principal Meridian, State of Minnesota, County of Nobles.

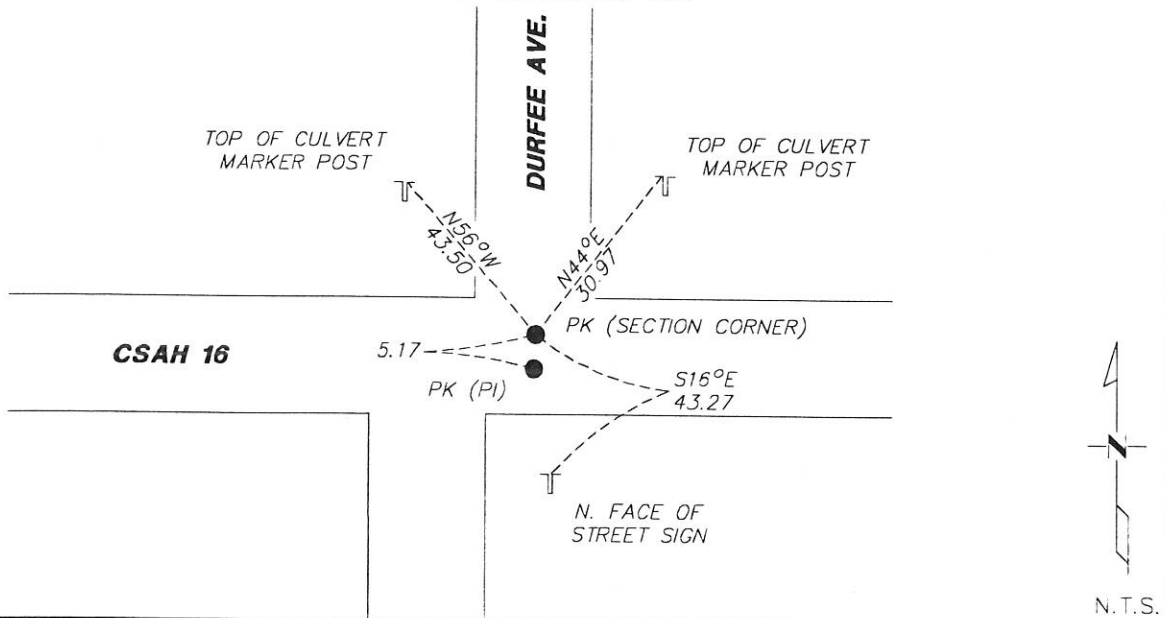
At the corner location shown on the sketch:

On 12/6/17 found a PK NAIL 9.4' NORTH OF THE CENTERLINE INTERSECTION
DATE

left monument as found lowered monument removed monument (explain)

On _____ placed a _____
DATE

SKETCH OF REFERENCE TIES



Statement of evidence for this corner location is on back of this page.

I hereby certify that this document was researched and prepared by me or under my direct supervision and that I am a licensed Land Surveyor under the laws of the State of Minnesota.

Signature L.M. Wilson

Date 1/8/18 License No. 49563

Title:

- Land Surveyor Professional Engineer
- County Surveyor County Engineer

DOCUMENT NUMBER A 357389
Certified, Filed and or Recorded on
February 28, 2018 12:30 PM

Lynn Wilson

NOBLES COUNTY RECORDER
LYNN M. WILSON
507-295-5268

Pages: 2

Statement of Evidence:

A-9

Northeast Corner of Section 5, Township 103 North, Range 42 West, 5th Principal Meridian, Nobles County, Minnesota.

1869-Deputy Surveyor set a post in mound with pits.

1897- Nobles County Highway Department "Corner Ties Book" calls for a stone to mark the corner location.

1902- Nobles County Highway Department "Corner Ties Book" calls for a stone to mark the corner location.

1922- Nobles County Highway Department "Corner Ties Book" calls for a stone to mark the corner location.

1944- Nobles County Highway Department "Corner Ties Book" calls for a stone and placed wood stake to mark the corner location. Highway plans show the corner to be 5.3' north of the P.O.T

1955- Nobles County Highway Department "Corner Ties Book" calls for a stake to mark the corner location.

1967- Nobles County Highway Department "Corner Ties Book" calls for a placed iron rod to mark the corner location.

1979- Nobles County Highway Department "Corner Ties Book" calls for an iron rod to mark the corner location.

2002- Nobles County Highway Department "Corner Ties Book" calls for a 3/4" rebar found and a 3/4" rebar was raised to mark the corner.

2016- Nobles County Highway Department "Corner Ties Book" calls for a PK nail was set after an overlay to mark the corner location.

2017- Westwood Professional Services recovered two PK nails with a magnetic indications under them. One at the centerline intersection (P.O.T) and one 5.17' north of the intersection (section corner). Ties were found or set as shown on the front of this certificate.

Analysis of the recovered data, field evidence and survey measurements, indicates that the monument found is the correct perpetuation of this corner. For additional information concerning this corner please contact Westwood Professional Services.