

SW COR
Sec 34
104
42

COPY

Index A-13

CERTIFICATE OF LOCATION OF GOVERNMENT CORNER

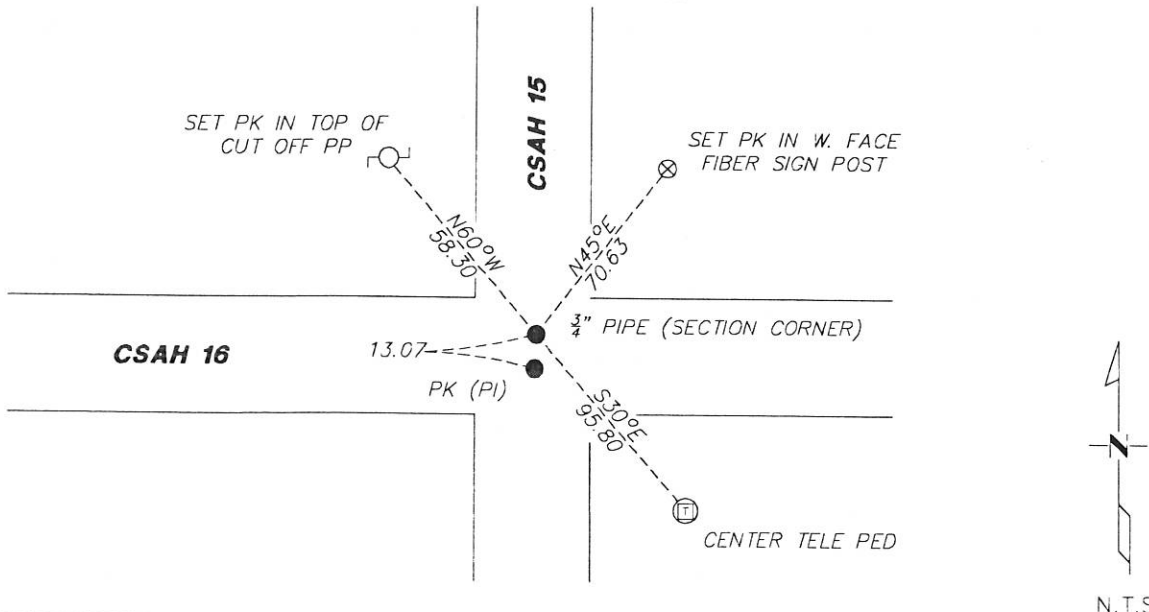
NORTHEAST Corner of Section 4, Township 103N, Range 42W

5th Principal Meridian, State of Minnesota, County of Nobles.

At the corner location shown on the sketch:

- On 12/6/17 found a 3/4" PIPE 13' NORHT OF THE CENTERLINE INTERSECTION
DATE
- left monument as found lowered monument removed monument (explain)
- On _____ placed a _____
DATE

SKETCH OF REFERENCE TIES



N.T.S.

Statement of evidence for this corner location is on back of this page.

I hereby certify that this document was researched and prepared by me or under my direct supervision and that I am a licensed Land Surveyor under the laws of the State of Minnesota.

Signature L.M. Wilson

Date 1/8/18 License No. 49563

Title:

- Land Surveyor Professional Engineer
- County Surveyor County Engineer

DOCUMENT NUMBER A 357386
Certified, Filed and or Recorded on
February 28, 2018 12:15 PM

Lynn Wilson
LW

NOBLES COUNTY RECORDER
LYNN M. WILSON
507-295-5268

Pages: 2

Statement of Evidence:

A-13

Northeast Corner of Section 4, Township 103 North, Range 42 West, 5th Principal Meridian, Nobles County, Minnesota.

1869-Deputy Surveyor set a post in mound with pits.

1897- Nobles County Highway Department "Corner Ties Book" calls for a stone to mark the corner location.

1902- Nobles County Highway Department "Corner Ties Book" calls for a stone to mark the corner location.

1922- Nobles County Highway Department "Corner Ties Book" calls for a stone to mark the corner location.

1943- Nobles County Highway Department "Corner Ties Book" calls for a stone to mark the corner location.

1955- Nobles County Highway Department "Corner Ties Book" calls for a stone and a placed iron pin mark the corner location. Highway plans show the corner 13' north of the highway PI.

1967- Nobles County Highway Department "Corner Ties Book" calls for a placed iron rod to mark the corner location.

1980- Nobles County Highway Department "Corner Ties Book" calls for an iron pin and set ties to mark the corner location.

2002- Nobles County Highway Department "Corner Ties Book" calls for a bridge spike and raised with a 3/4" pipe to mark the corner location.

2016- Nobles County Highway Department "Corner Ties Book" calls for a PK nail was set after an overlay to mark the corner location.

2017- Westwood Professional Services recovered a 3/4" pipe 13.07' north of the highway PI. Ties were found or set as shown on the front of this certificate.

Analysis of the recovered data, field evidence and survey measurements, indicates that the monument found is the correct perpetuation of this corner. For additional information concerning this corner please contact Westwood Professional Services.