

SW Cor  
Sec 36  
104 42

**COPY**

Index 4-21

# CERTIFICATE OF LOCATION OF GOVERNMENT CORNER

NORTHEAST Corner of Section 2, Township 103N, Range 42W

5th Principal Meridian, State of Minnesota, County of Nobles.

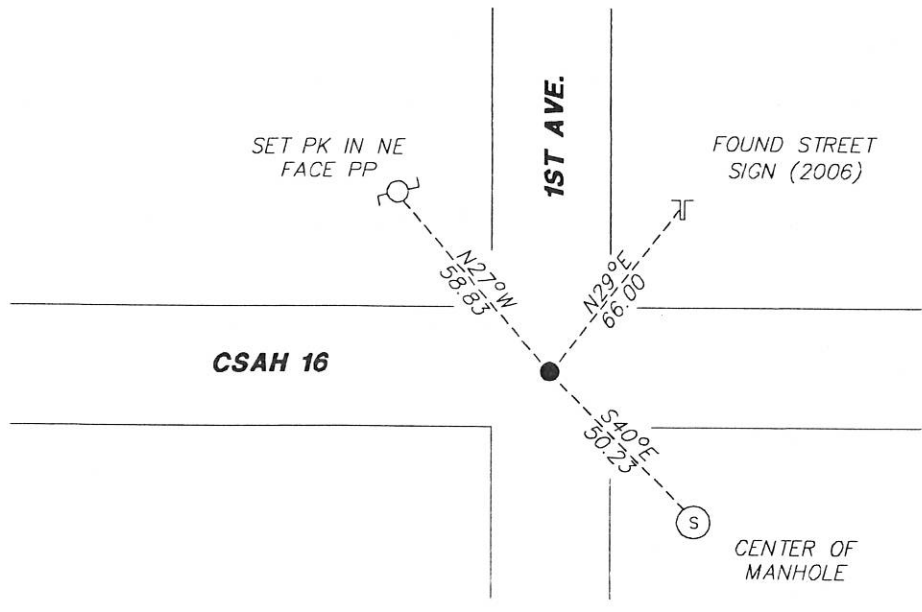
At the corner location shown on the sketch:

On 11/30/17 found a 5/8" REBAR AT THE CENTERLINE INTERSECTION  
DATE

left monument as found     lowered monument     removed monument (explain)

On \_\_\_\_\_ placed a \_\_\_\_\_  
DATE

### SKETCH OF REFERENCE TIES



N.T.S.

Statement of evidence for this corner location is on back of this page.

I hereby certify that this document was researched and prepared by me or under my direct supervision and that I am a licensed Land Surveyor under the laws of the State of Minnesota.

Signature L.M. Wilson

Date 1/8/18 License No. 49563

Title:

- Land Surveyor     Professional Engineer
- County Surveyor     County Engineer

DOCUMENT NUMBER A 357281  
Certified, Filed and or Recorded on  
February 28, 2018 11:45 AM

*Lynn Wilson*

NOBLES COUNTY RECORDER  
LYNN M. WILSON  
507-295-5268

Pages: 2

**Statement of Evidence:**

A-21

Northeast Corner of Section 2, Township 103 North, Range 42 West, 5<sup>th</sup> Principal Meridian, Nobles County, Minnesota.

1869-Deputy Surveyor set a post in mound with pits.

1901- Nobles County Highway Department "Corner Ties Book" calls for a stone to mark the corner location.

1912- Nobles County Highway Department "Corner Ties Book" calls for a stone to mark the corner location.

1936- Nobles County Highway Department "Corner Ties Book" calls for a stone to mark the corner location.

1943- Nobles County Highway Department "Corner Ties Book" calls for a stake to mark the corner location.

1961- Nobles County Highway Department "Corner Ties Book" calls for an iron pin to mark the corner location.

1967- Nobles County Highway Department "Corner Ties Book" calls for an iron pin to mark the corner location.

2006 - Ulteig Engineers found a 5/8" rebar at the road centerline intersection, set ties, and filed a Certificate of Location doc. no. 311286

2017- Westwood Professional Services recovered a 5/8" rebar at the road centerline intersection and one tie from the 2006 Certificate. Ties were found or set as shown on the front of this certificate

Analysis of the recovered data, field evidence and survey measurements, indicates that the monument found is the correct perpetuation of this corner. For additional information concerning this corner please contact Westwood Professional Services.

8/18/11