

15

SW Sec 8 104 42

COPY

Index J-5

# CERTIFICATE OF LOCATION OF GOVERNMENT CORNER

NORTHEAST Corner of Section 18, Township 104N, Range 42W

5th Principal Meridian, State of Minnesota, County of Nobles.

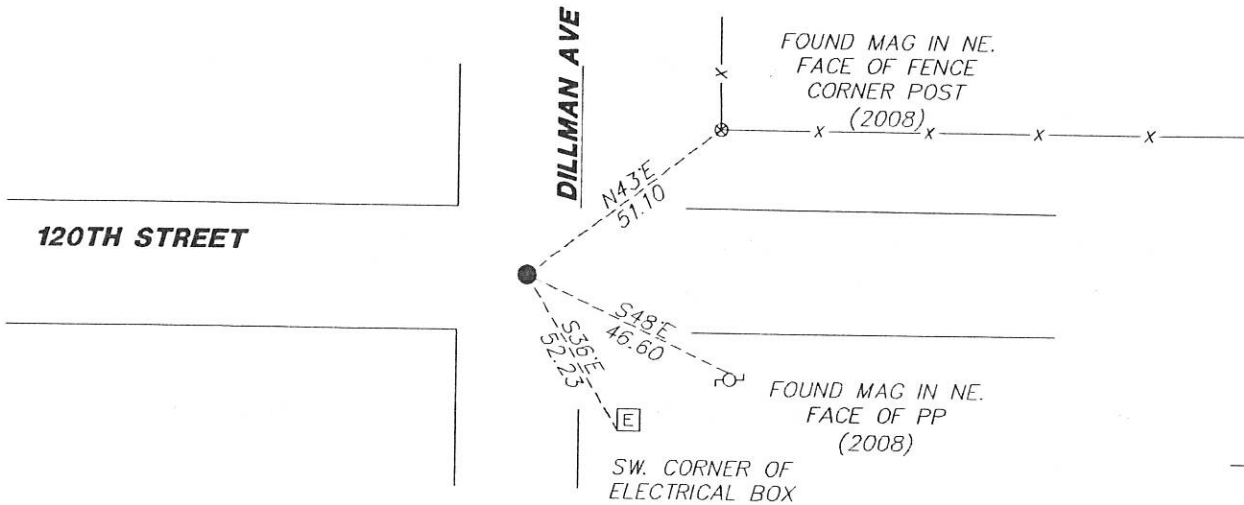
At the corner location shown on the sketch:

On 11/29/2017 found a FOUND 1/2" IRON PIPE CAPPED 42604 AT THE CENTERLINE INTERSECTION.  
DATE

left monument as found       lowered monument       removed monument (explain)

On \_\_\_\_\_ placed a \_\_\_\_\_  
DATE

### SKETCH OF REFERENCE TIES



Statement of evidence for this corner location is on back of this page.

I hereby certify that this document was researched and prepared by me or under my direct supervision and that I am a licensed Land Surveyor under the laws of the State of Minnesota.

Signature [Handwritten Signature]

Date 2/7/18 License No. 49563

Title:

- Land Surveyor       Professional Engineer
- County Surveyor       County Engineer

OFFICE OF THE COUNTY RECORDER

DOCUMENT NUMBER A 357504  
Certified, Filed and or Recorded on  
March 06, 2018 3:02 PM

[Handwritten Signature: Lynn Wilson]

NOBLES COUNTY RECORDER  
LYNN M. WILSON  
507-295-5268

Pages: 2

**Statement of Evidence:**

J-5

Northeast Corner of Section 18, Township 104 North, Range 42 West, 5<sup>th</sup> Principal Meridian, Nobles County, Minnesota.

1868-Deputy Surveyor set a post in mound with pits

1894- Nobles County Highway Department "Corner Ties Book" calls for a stone set to mark the corner location.

1934- Nobles County Highway Department "Corner Ties Book" calls for a stone to mark the corner location.

2006 - Paul Greenhagen set a 1/2" pipe capped LS 42604 on centerline road intersection and filed a Certificate of Location doc. no. 312964

2008 - Ulteig Engineers found a LS cap X2604 at the road intersection and filed a certificate of Location doc. no. 317867

2017- Westwood Professional Services recovered a 1/2" pipe with LS cap 42604 at the centerline intersection. Ties were found or set as shown on the front of this certificate

Analysis of the recovered data, field evidence and survey measurements, indicates that the monument found is the correct perpetuation of this corner. For additional information concerning this corner please contact Westwood Professional Services.

*[Handwritten signature]*  
2/1/18